

JURONG ISLAND - SINGAPORE REFINING COMPANY (OSRC)

JETTY	DEPTH A/S (m)	APPROACH DEPTH (m)	MAX LOA(m)	MAX DISPL (tons)	REMARKS
OSRC1P	15.5] 13.8] Brg 060 x 170m from] Merlimau East Bn	290	105,000	Using Deep water channel at East Jurong Channel.
OSRC2P	15.3		290	105,000	Starboard side alongside only ¹
OSRC3T	10.9	12.1	160	20,000	
OSRC5P	10.6	8.3	138	13,000	See General Information 3
OSRC6T	11.0	12.1	140	18,000	
OSRC7T	12.4	12.1	274	68,000	Port side alongside only.

¹Vessel may go port side alongside only if terminal is unable to accept starboard side alongside due to operational constraints.

GENERAL INFORMATION

1. Vessels bound for OSRC 1P, 2P and 5P will use East Jurong Channel and those bound for OSRC 3T, 6T and 7T will use West Jurong Channel.
2. Pilot Walkie channel: P02
Control Room: 6357 0143/5
3. Due to shallower water beyond 160m from the line of berth of OSRC5P, vessels with drafts greater than 6.3m and over 115m in length are advised not to swing around south of the line of berth during berthing or unberthing.
4. For more information of terminal requirements, other than Pilotage Guidelines, please refer to the following website:

<http://src.com.sg/download/srcberthregulations.pdf>

PILOTAGE GUIDELINES

BERTHING AND UNBERTHING (DAY and NIGHT)

No restriction

MOORING ARRANGEMENT RECOMMENDATIONS & TUG ASSIGNMENT GUIDELINES

The following are recommendations for vessels mooring arrangement and guidelines for assigning tugs to vessels berthing & unberthing @:

Berth 1, 2, 3, 6 and 7 (OSRC1P, OSRC2P, OSR3CT, OSRC6T and OSRC7P)

LENGTH OVERALL OF VESSEL (LOA)	MOORING ARRANGEMENT	NUMBER OF TUGS	REMARKS
Up to 70 metres		Pilot, in consultation with the master, may order a tug from the tug company nominated by the ship's agent	
71 to 122 metres	FWD: 3 Headlines and 2 Spring Lines AFT: 3 Stern lines and 2 Spring lines	1 small tug	A vessel equipped with a suitable bow/stern thruster(s), in good working condition, may dispense with the need for a tug in that position.
123 to 152 metres		2 small tugs	
153 to 180 metres	FWD: 4 Headlines and 2 Spring Lines AFT: 4 Stern lines and 2 Spring lines	2 medium tugs	
181 to 220 metres		2 big tugs	
221 to 280 metres	FWD: 4 Headlines, 2 Breast lines, 2 Spring Lines AFT: 4 Stern lines, 2 Breast lines, 2 Spring lines	2 big tugs	Pilot, in consultation with the master, may order an additional tug from the tug company nominated by the ship's agent
281 metres and above		4 big tugs	

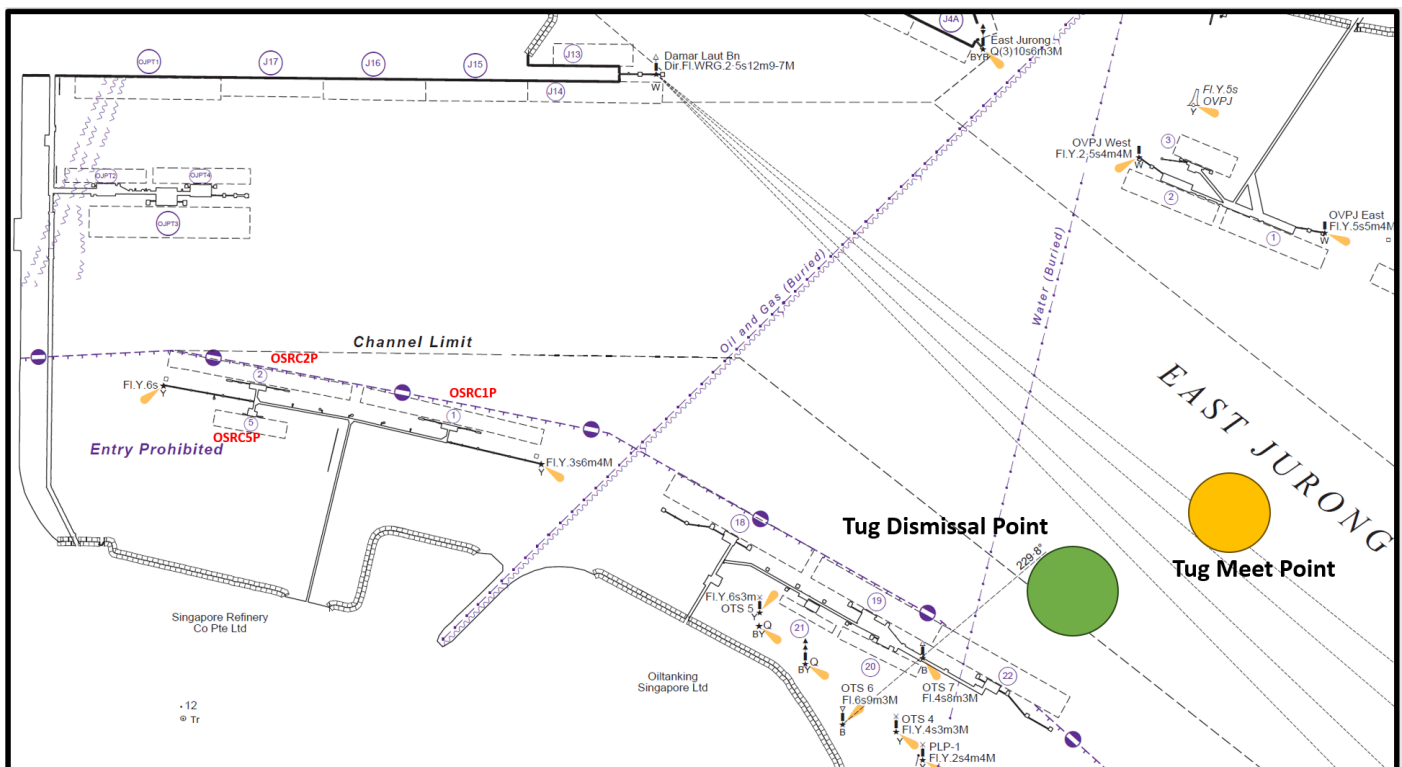
The following are recommendations for vessels mooring arrangement and guidelines for assigning tugs to vessels berthing & unberthing @:
Berth 5 (OSR5CP)

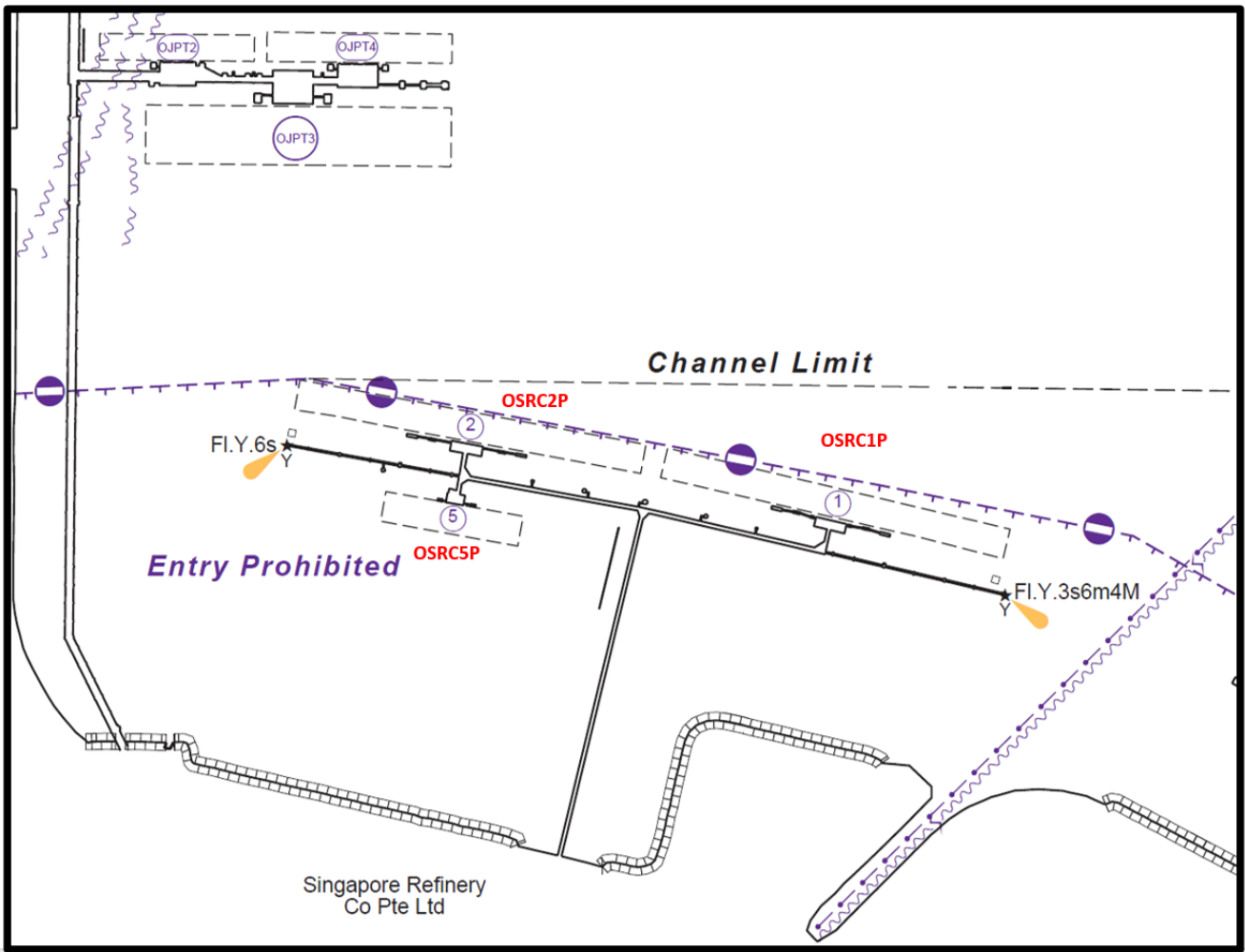
LENGTH OVERALL OF VESSEL (LOA)	MOORING ARRANGEMENT	NUMBER OF TUGS	REMARKS
Up to 70 metres	FWD: 3 Headlines and 2 Spring Lines	1 small tug	A vessel equipped with a suitable bow/stern thruster(s), in good working condition, may dispense with the need for a tug in that position.
71 to 140 metres	AFT: 3 Stern lines and 2 Spring lines	2 small tugs	

CHARTLET

Chartlet for illustration purposes only, not to be used for navigation. For navigation, mariners are advised to use the appropriate BA nautical charts.

OSRC1P, OSRC2P and OSRC5P





OSRC3T, OSRC6T and OSRC7T

