



MARITIME AND PORT AUTHORITY OF SINGAPORE

PORT MARINE NOTICE
NO. 07 OF 2024

23 Jan 2024

Shipping Community
Harbour Craft Community
Pleasure Craft Community

SUBMARINE CABLE SYSTEM TRENCHING, ROCKSAW & CABLE INSTALLATION
ALONG EAST JOHOR STRAIT

Applicable to: Mariners operating along East Johor Strait, Kuala Johor

Date : With effect from 26 Feb 2024 to 11 May 2024.

Location : In the East Johor Strait off Changi, within the working area bounded by the following co-ordinates (see attached chartlet):

<u>Working Area (WGS 84 Datum)</u>		
<u>Point</u>	<u>Latitude (N)</u>	<u>Longitude (E)</u>
1	1°23.20'	104°00.02'
2	1°23.29'	104°00.17'
3	1°23.34'	104°00.28'
4	1°23.55'	104°00.49'
5	1°23.57'	104°00.53'
6	1°23.58'	104°00.65'
7	1°23.57'	104°00.74'
8	1°23.54'	104°00.79'
9	1°23.36'	104°01.01'
10	1°22.72'	104°01.76'
11	1°19.13'	104°05.99'
12	1°17.77'	104°06.98'
13	1°17.64'	104°07.10'
14	1°17.51'	104°07.20'
15	1°17.48'	104°07.16'
16	1°17.60'	104°07.06'
17	1°17.74'	104°06.92'
18	1°19.09'	104°05.96'
19	1°22.68'	104°01.72'
20	1°23.32'	104°00.97'
21	1°23.49'	104°00.76'
22	1°23.52'	104°00.72'
23	1°23.53'	104°00.65'

24	1°23.52'	104°00.55'
25	1°23.50'	104°00.52'
26	1°23.29'	104°00.31'
27	1°23.24'	104°00.20'
28	1°23.15'	104°00.04'

Working Hours : 24 hours daily including Sundays and Public Holidays.

Craft :

<u>Name</u>	<u>Harbour Craft Licence No.</u>	<u>Description</u>
ASEAN Protector	THCLMP	Cable Laying Barge
Eng Hup Gallant	ST 1526I	AHT
Eng Hup Valour	ST 1445I	AHT
Eng Hup Energy	SP 1305G	Safety Boat
Eng Hup Bee Sin	SP 1302B	Safety Boat
Eng Hup Supporter	SP 1306E	Safety Boat
Eng Hup Offshore	SP 1303J	Safety Boat

These craft will exhibit the appropriate local and international day and night signals.

Details : The works will be carried out by the cable laying barges "ASEAN Protector". The safety zone is a circular area with a radius of 150-metre centered at the location from the barge.

A safety boat will be deployed to warn other craft in the vicinity of the working area.

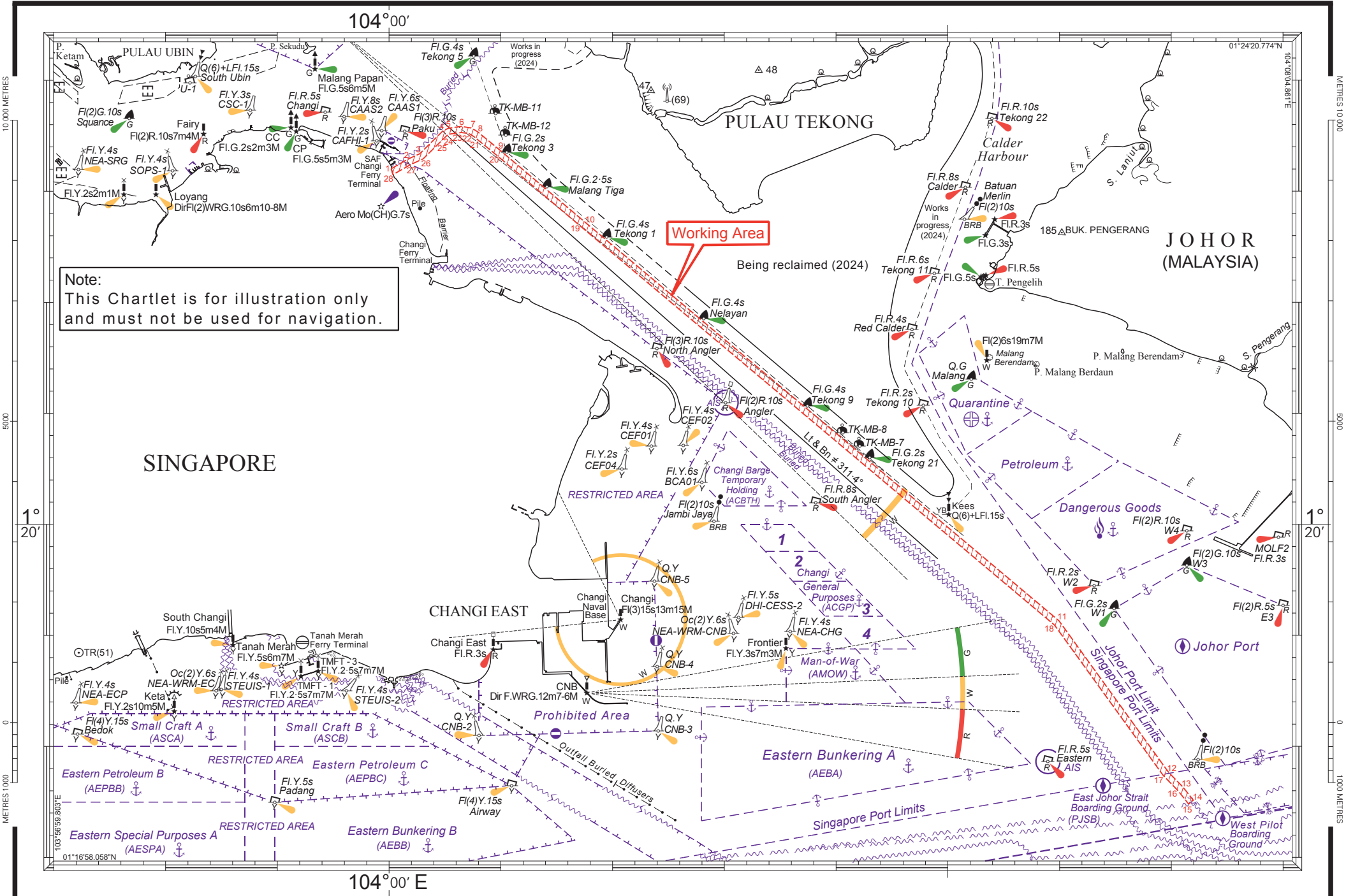
Further general enquiries relating to the project can be directed to Mr Wang Yew Choon, Project Manager at Tel: 9695 5890 (email: ycwang@acpl.com.sg) or Mr Robert Hsueh, Marine Ops Manager at Tel: 9739 3092 (email: roberthsueh@acpl.com.sg).

Caution : **When in the vicinity of the working area, mariners are reminded to:**

- a) **Keep well clear and not to enter the working area;**
- b) **Maintain a proper lookout;**
- c) **Proceed at a safe speed and navigate with caution;**
- d) **Maintain a listening watch on VHF Channel 21 (Sembawang Control) and**
- e) **Communicate with Sembawang Control on VHF Channel 21 for assistance, if required.**

Please call Capt. Divakar Nadarajan at Tel: (65) 6325-2582 or Marine Safety Control Centre (MSCC) Duty Officer at (65) 6325-2488/2489 for clarification on this Port Marine Notice.

CAPT CHONG JIA CHYUAN
PORT MASTER
MARITIME AND PORT AUTHORITY OF SINGAPORE



Note:
This Chartlet is for illustration only
and must not be used for navigation.