



M P A  
SINGAPORE

## SINGAPOREAN NOTICES TO MARINERS

---

SECTION	CONTENT	Page
II	Notices to Mariners and Chart Corrections Temporary and Preliminary Notices	1 2
III	Amendments to Publications	3

---

The supplementary Singaporean Notices to Mariners contains corrective information affecting charts published by the Hydrographic Division, Maritime and Port Authority of Singapore. The information contained in these Notices should be updated on the charts affected.

The supplementary Singaporean Notices to Mariners can be accessed directly from the MPA website:  
[www.mpa.gov.sg/media-centre](http://www.mpa.gov.sg/media-centre)

**MPA Telegram Channel:** MPA has launched a Telegram channel for notices and circulars. To stay updated, please subscribe via the following link <https://go.gov.sg/mpa-telegram> or scan the QR code:



<https://go.gov.sg/mpa-telegram>

**Contact information:**

Hydrographic Division  
Maritime and Port Authority of Singapore  
7B Keppel Road  
#20-00 Tanjong Pagar Complex  
Singapore 089055  
Tel : 1800 272 7777 / (65) 6272 7777

**II**  
**NOTICES TO MARINERS AND CHART CORRECTIONS**

Amendments to anchorages, fairways and the related navigational buoys affecting the following publications will come into effect on 1 March 2025, 0001 hours (SGT).

**GSP1/SP1** 9 Ed 15/01/25 Last NM 14/2025 (Maritime and Port Authority of Singapore) **\*NM 19/2025**

**Insert** the accompanying block, centred on: 1°15·10'N 103°39·05'E

---

**500** 8 Ed 15/09/17 Last NM 13/2025 (Maritime and Port Authority of Singapore) **\*NM 19/2025**

**Insert** the accompanying block, centred on: 1°14·60'N 103°38·70'E

---

**501** 7 Ed 01/09/15 Last NM 13/2025 (Maritime and Port Authority of Singapore) **\*NM 19/2025**

**Insert** the accompanying block, centred on: 1°14·47'N 103°38·85'E

---

\*Source: Maritime and Port Authority of Singapore

## II TEMPORARY AND PRELIMINARY NOTICES

**\*(NM 20P/2025) : REVISION OF BOUNDARIES OF TEMASEK FAIRWAY AND WEST JURONG CHANNEL AND DISCONTINUATION OF VERY LARGE CRUDE CARRIER ANCHORAGE (AVLCC)**

- Description :
1. The Very Large Crude Carrier Anchorage (AVLCC) will be discontinued, and the boundaries of Temasek Fairway and West Jurong Channel will be revised. These changes will come into effect on 1 March 2025, 0001 hours (SGT).
  2. Refer to PMC 03 of 2025:  
[Media Centre | Maritime & Port Authority of Singapore \(MPA\)](#)
  3. The amendments to the Second and Third Schedules of the Maritime and Port Authority of Singapore (Port) Regulations, as amended by the Maritime and Port Authority of Singapore (Port) (Amendment) Regulations 2025, will be published in the Gazette on 28 February 2025. An electronic copy of the Maritime and Port Authority of Singapore (Port) (Amendment) Regulations 2025 can be downloaded from [www.egazette.gov.sg](http://www.egazette.gov.sg) on or after 1700 hours (SGT), 28 February 2025.
  4. The revision will also include the re-location, removal and renaming of navigational buoys on the west of Temasek Fairway.
  5. Mariners are advised to navigate with caution in the area.
  6. These changes have been updated through notices to mariners/ ENC incremental updates for charts GSP1/SP1, 500, 501; ENCs SG5C4030, SG5C4033; and publication Singapore Port Information.
  7. These changes will be included in notices to mariners and in the next new edition of chart 4030, 4031, 4033, 4038 and 4040.

**\*(NM 21T/2025) : SUNKEN BUOY, SOPS-1 WITHIN THE VICINITY OF LOYANG OFFSHORE SUPPLY BASE**

- Description :
1. A sunken buoy, 'SOPS-1' has been reported at position Lat 1°23'188"N Long 103°58'064'E within the vicinity of Loyang Offshore Supply Base.
  2. A marker buoy has been established at the same position.
  3. Mariners are advised to navigate with caution.

Charts affected : Singaporean GSP1/SP1, Dual Badged BA4044, BA4044 (Plan A)

ENCs affected : SG5C4044A

\*Source: Maritime and Port Authority of Singapore

### III AMENDMENTS TO PUBLICATIONS

Amendments to anchorages, fairways and the related navigational buoys affecting the following publications will come into effect on 1 March 2025, 0001 hours (SGT).

**\*(NM 22/2025) UPDATING OF PUBLICATION “SINGAPORE PORT INFORMATION 2025”**

The Singapore Port Information 2025 including the following updates can be accessed directly from MPA Website:

<https://www.mpa.gov.sg/who-we-are/newsroom-resources/publications/singapore-port-information>

#### CHARACTERISTICS OF AIDS TO NAVIGATION

**1. Page 53**

**TUAS VIEW EXTENSION**

**Amend** the following:

Name Of Beacon / Buoy	Position Lat. N Long. E Deg Min	Structure, Colour & Shape	Light Characteristic	Owner
TMS-1 Buoy	<b>01°14·495'</b> <b>103°38·961'</b>	Red can	Fl(3)R.15s	MPA

**Delete** the following:

Name Of Beacon / Buoy	Position Lat. N Long. E Deg Min	Structure, Colour & Shape	Light Characteristic	Owner
TMS-2 Buoy	01°15·377' 103°38·737'	Red can	Fl.R.4s	MPA

**1. Page 54**

**TEMASEK FAIRWAY**

**Amend** the following:

Name Of Beacon / Buoy	Position Lat. N Long. E Deg Min	Structure, Colour & Shape	Light Characteristic	Owner
Temasek Buoy	<b>01°13·030'</b> <b>103°39·515'</b>	Red can	Fl.R.2s	MPA
<b>TMS-2 Buoy</b>	01°16·198' 103°38·707'	Red can	Fl.R.5s	MPA

### III AMENDMENTS TO PUBLICATIONS

Amendments to anchorages, fairways and the related navigational buoys affecting the following publications will come into effect on 1 March 2025, 0001 hours (SGT).

**\*(NM 22/2025) UPDATING OF PUBLICATION “SINGAPORE PORT INFORMATION 2025”**

The Singapore Port Information 2025 including the following updates can be accessed directly from MPA Website:

<https://www.mpa.gov.sg/who-we-are/newsroom-resources/publications/singapore-port-information>

#### ANCHORAGES AND FAIRWAYS IN THE PORT

##### DESIGNATED ANCHORAGES IN PORT

**1. Page 42**

**Amend** the following:

Please refer to Port Marine Circular **No. 03 of 2025** dated 20 February 2025.

Website: [Media Centre | Maritime & Port Authority of Singapore \(MPA\)](#)

**2. Page 44**

**Delete** the following:

<b>C JURONG SECTOR</b>			
<b>30</b>	<b>Very Large Crude Carrier (AVLCC)</b>	<b>22.6</b>	<b>1° 13.499’ 103° 39.125’</b>
	<b>Note: (High spot of 20.6 exists bearing 242° (T) x 662m from Temasek Buoy)</b>		<b>1° 13.611’ 103° 39.185’</b>

### III AMENDMENTS TO PUBLICATIONS

Amendments to anchorages, fairways and the related navigational buoys affecting the following publications will come into effect on 1 March 2025, 0001 hours (SGT).

**\*(NM 22/2025) UPDATING OF PUBLICATION “SINGAPORE PORT INFORMATION 2025”**

The Singapore Port Information 2025 including the following updates can be accessed directly from MPA Website:

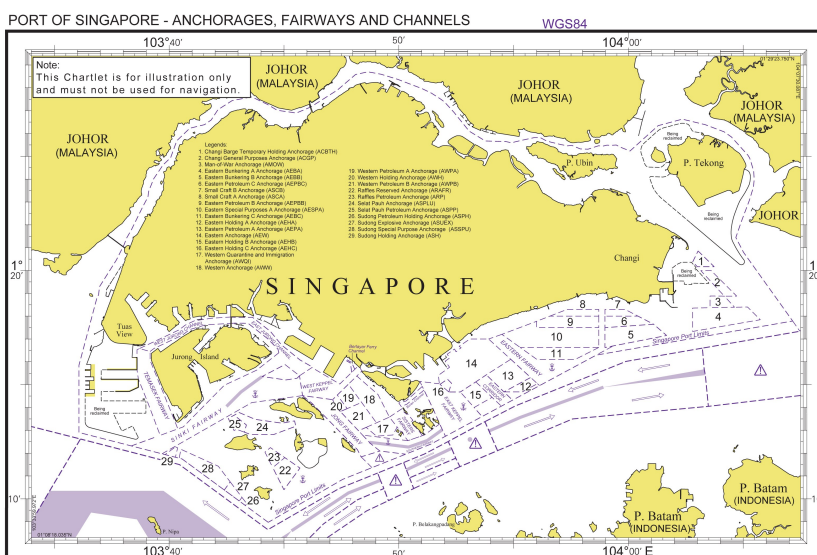
<https://www.mpa.gov.sg/who-we-are/newsroom-resources/publications/singapore-port-information>

**CHARTLETS**

**Port of Singapore - Anchorages and Fairways in the Port**

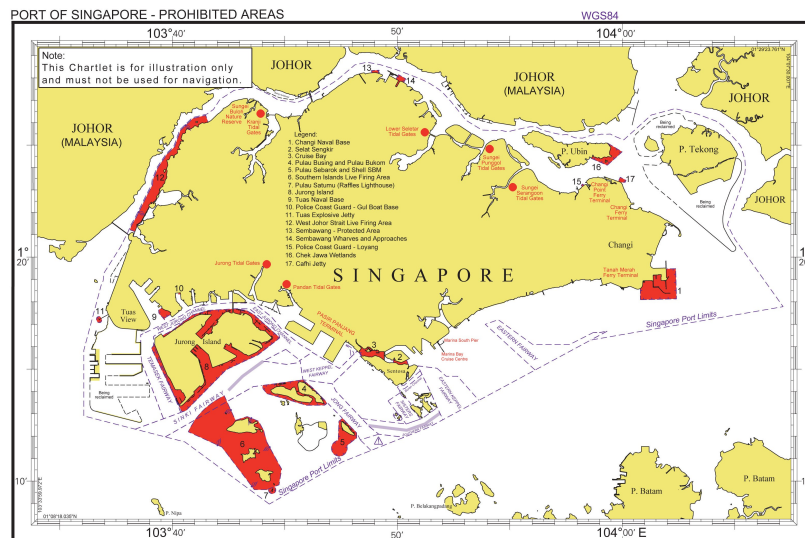
**3. Page 131**

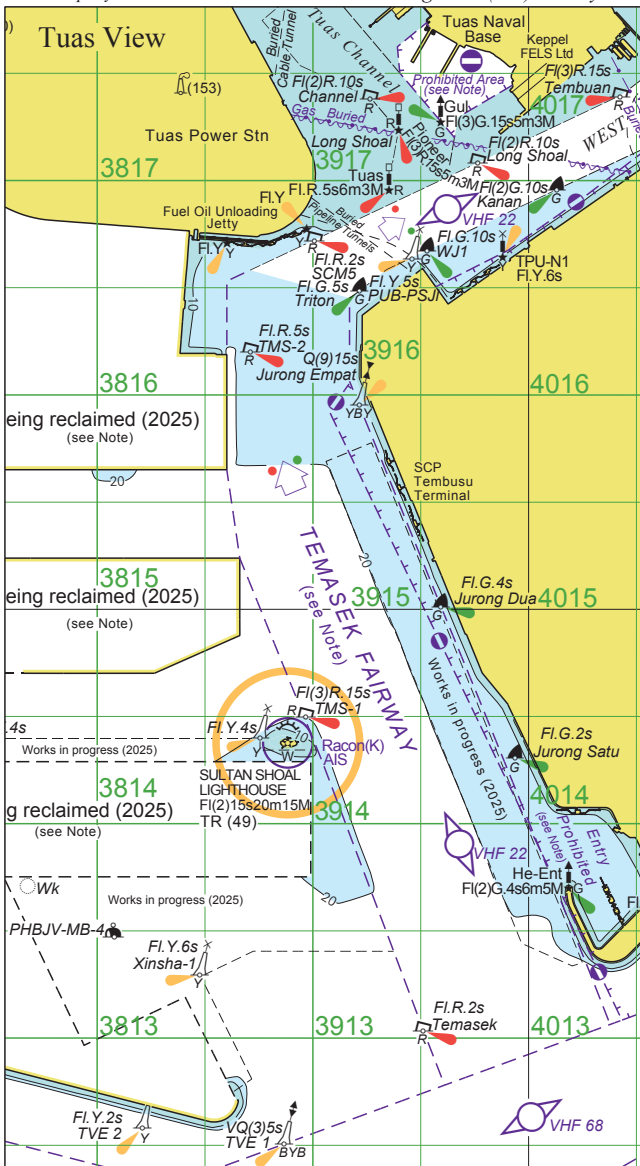
Replace the following:

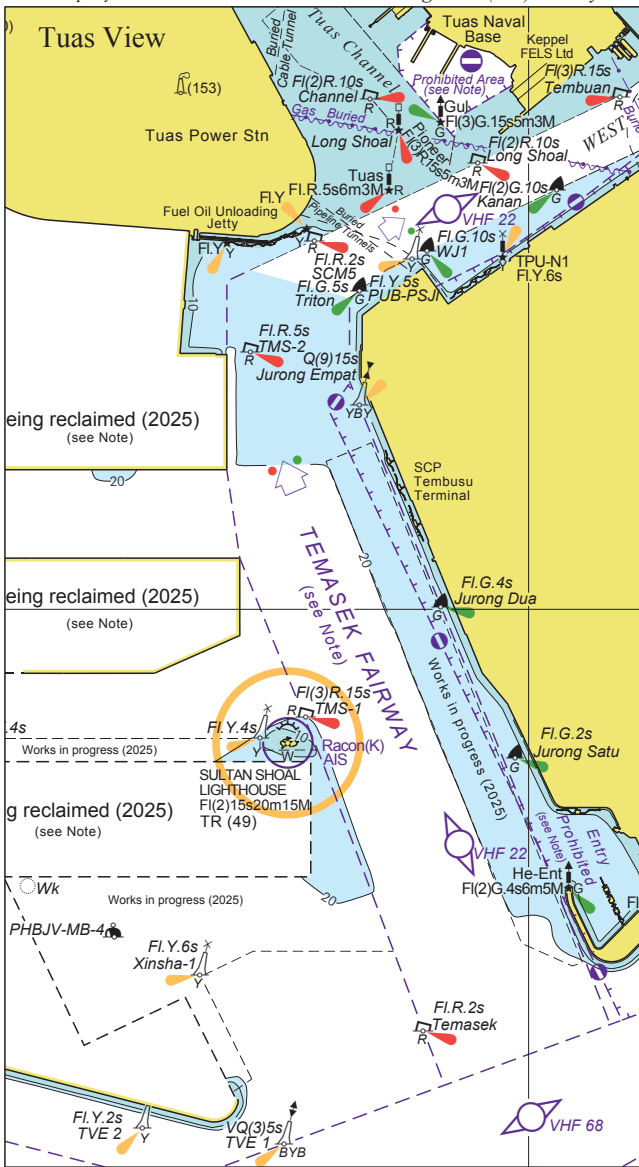


**4. Page 132**

Replace the following:

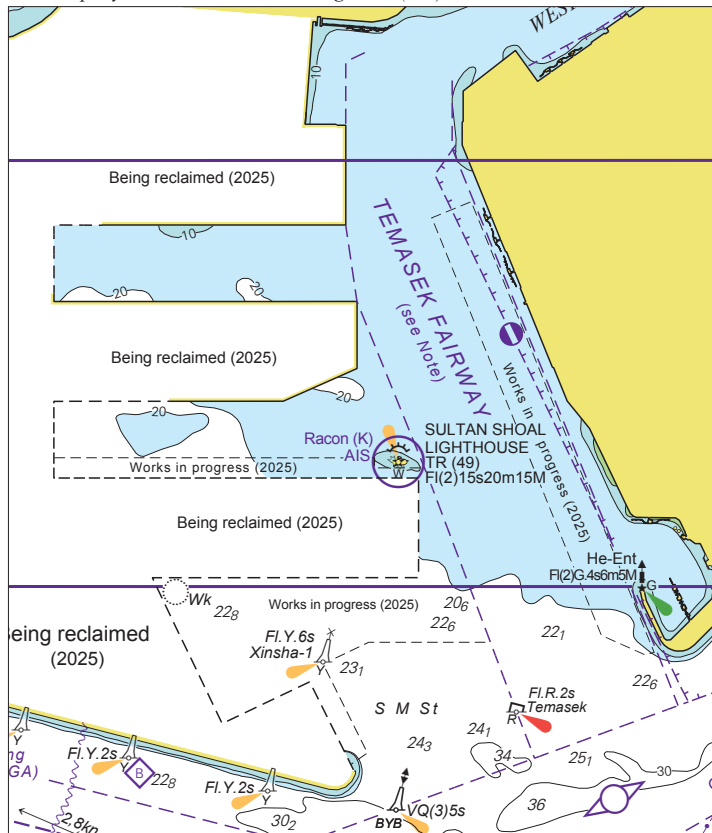






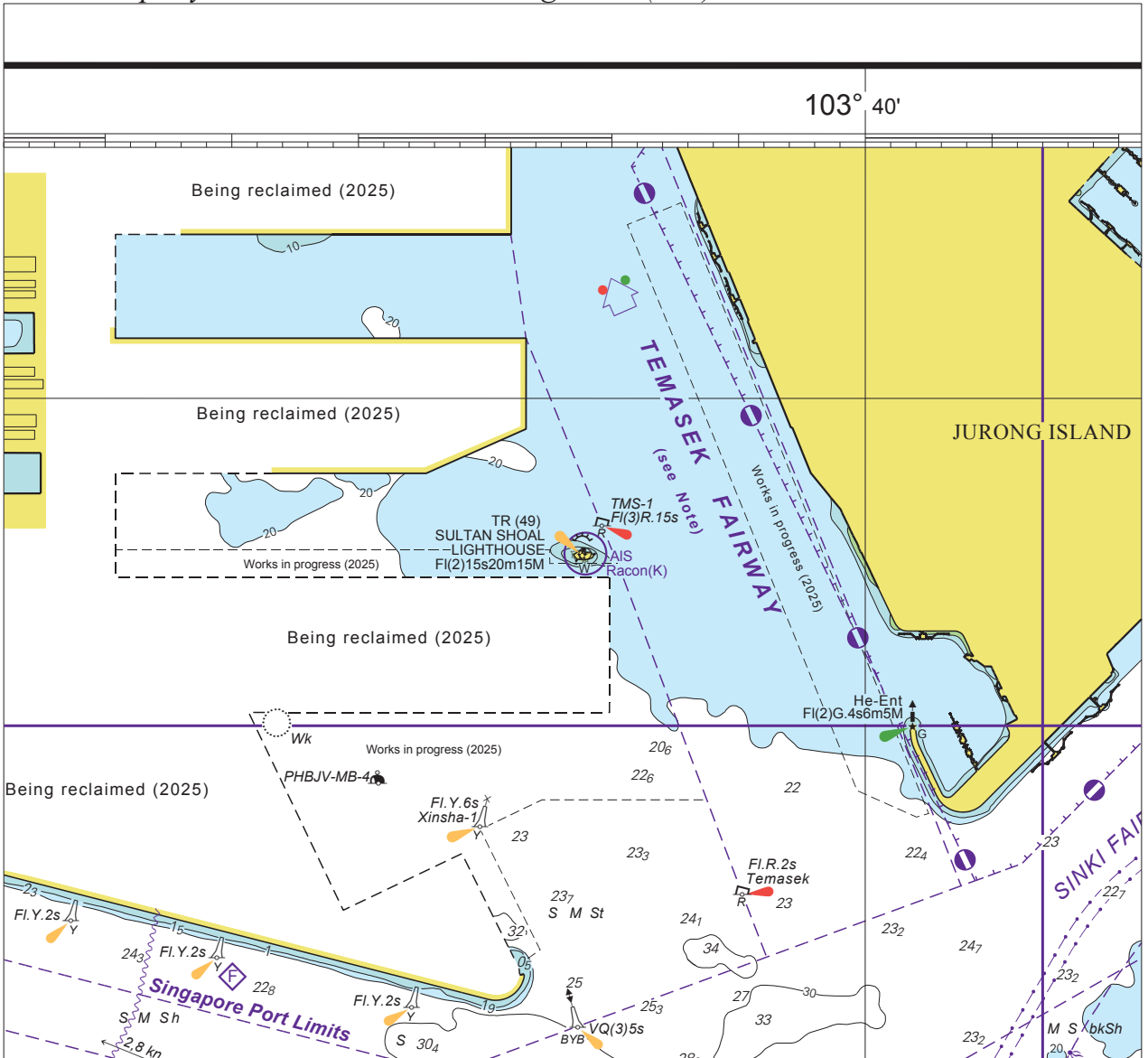


To accompany Notice to Mariners. Image Size (mm) 94.1 x 109



Block for Chart No 500

To accompany Notice to Mariners. Image Size (mm) 167.0 x 155.0



Block for Chart No 501