



SINGAPOREAN NOTICES TO MARINERS

	CONTENT	Page
I	Index of Charts & Publications	43
II	New Publications	44
	Notices to Mariners and Chart Corrections	46
	Temporary and Preliminary Notices	49
III	Navigational Information	51
	Amendments to Publications	52
IV	Reprint of Radio Navigational Warnings	53
V	Reprint of Admiralty Notices to Mariners for Dual Badged Charts	54

The monthly Notices to Mariners contain corrective information affecting charts published by the Hydrographic Department, Maritime and Port Authority of Singapore. The information contained in these Notices should be updated on the charts affected. Notices under Section II apply only to the particular Singaporean Chart(s) indicated.

Mariners are requested to notify the Chief Hydrographer, Maritime and Port Authority of Singapore, immediately on the discovery of new dangers or suspected dangers to navigation and of changes or defects in aids to navigation.

These notices can be accessed from the MPA webpage:

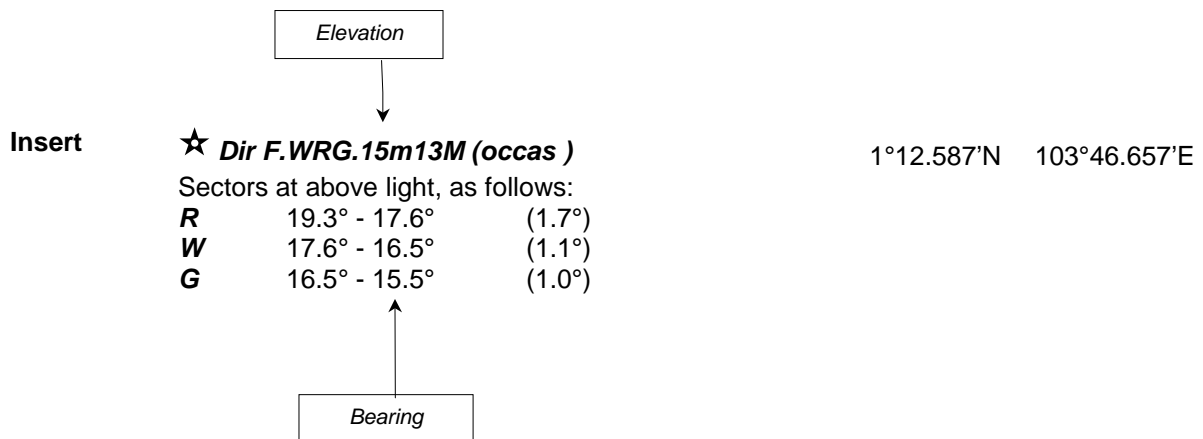
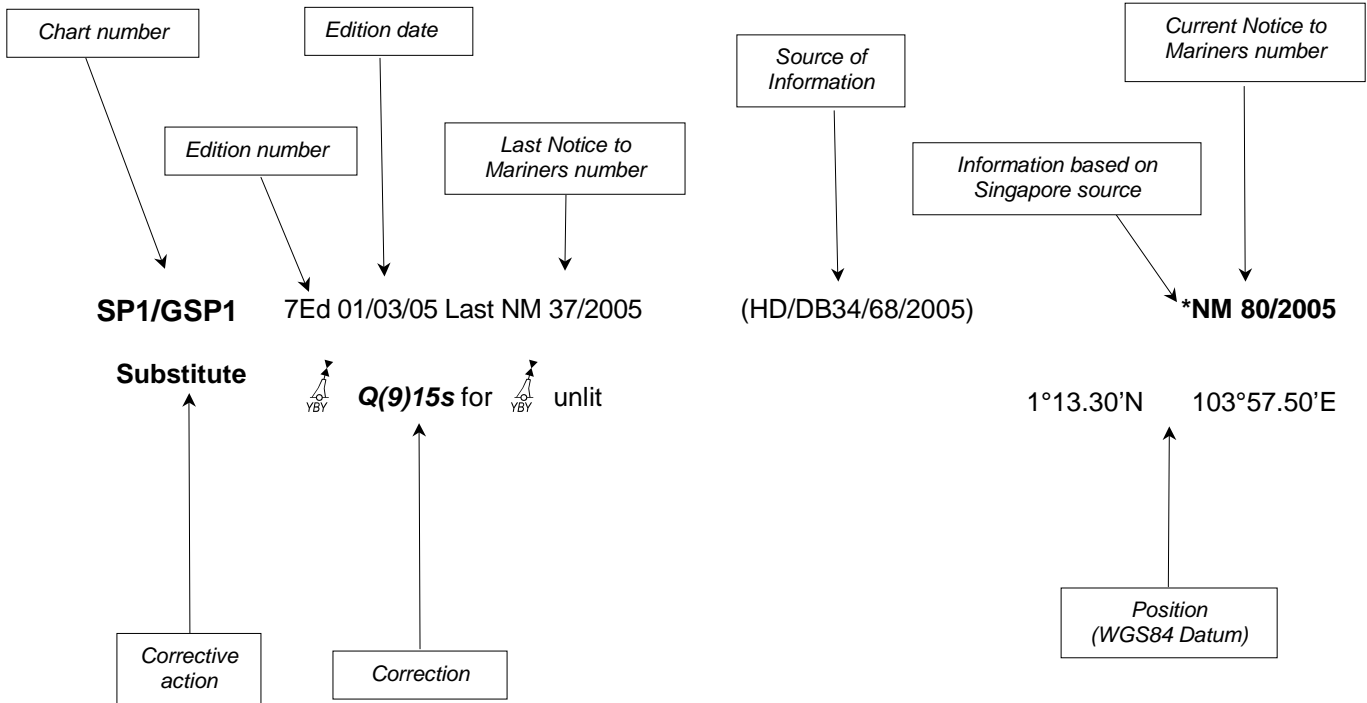
<http://www.mpa.gov.sg/infocentre/publications/noticesmari.htm>. Copies of these notices can also be obtained free from the Hydrographic Department, Maritime and Port Authority of Singapore or from our Chart Agent, Motion Smith telephone number (65) 62205098.

Hydrographic Department
Maritime and Port Authority of Singapore
P.O. Box 313
PSA Building Post Office
Singapore 911141

Tel : (65) 63751550
Fax : (65) 62787646

EXPLANATION OF FORMAT

The elements of a typical chart correction are explained below.



Notes:

- a) Notice to Mariners number followed by:
 - T** indicates a Temporary Notice (eg. *NM 80T/2005).
 - P** indicates a Preliminary Notice (eg. *NM 80P/2005).
- b) Bearings are referred to True Compass in degrees clockwise from 000° to 359°. Bearings related to lights are from seaward.
- c) Heights and elevations are above Mean High Water Springs.

I

INDEX OF CHARTS AND PUBLICATIONS

NOTICES	DESCRIPTION	PAGE	NOTICES	DESCRIPTION	PAGE
*21	New Edition Charts	44			
*22	New Edition Dual Badged Chart	44			
*23	New Publication	45			
*24	SP1 /GSP1	46			
*25	SP1 /GSP1	46			
*26	SP1 /GSP1	46			
27	SP1 /GSP1	46			
	501	47			
	502	48			
28	201	46			
29	201	46			
30	202	47			
	501	47			
31	501	47			
	502	48			
32	502	48			
33T	201	49			
	202	49			
	500	50			
34T	201	49			
	202	49			
	500	50			
35T	202	49			
*36	Reclamation at Pulau Ular	51			
*37	Updating of publication "SINGAPORE PORT INFORMATION - 2006/2007 EDITON"	52			

II NEW PUBLICATIONS

*(NM 21/2005) NEW EDITION CHARTS PUBLISHED 30TH MARCH 2006

Chart No. : SP1
Title : Anchorages and Aids to Navigation
Coverage : Lat 1° 08.20' N - 1° 29.40' N
 Long 103° 36.10' E - 104° 07.20' E
Scale : 1 : 60 000
Date Published : 30th March 2006
Size of chart : 961.4 x 651.2 mm
Remarks : Includes amendments to anchorages, depth contour, submarine cables, prohibited seabed activities corridor, limit of working area, aids to navigation, controlling depths and coastline of Southern Islands. Chart of the same number published on 1st March 2005 is superseded.
Price (Excluding GST) : S\$39.00

Chart No. : GSP1
Title : Anchorages and Aids to Navigation (with area reference)
Coverage : Lat 1° 08.20' N - 1° 29.40' N
 Long 103° 36.10' E - 104° 07.20' E
Scale : 1 : 60 000
Date Published : 30th March 2006
Size of chart : 961.4 x 651.2 mm
Remarks : Includes amendments to anchorages, depth contour, submarine cables, prohibited seabed activities corridor, limit of working area, aids to navigation, controlling depths and coastline of Southern Islands. Chart of the same number published on 1st March 2005 is superseded.
Price (Excluding GST) : S\$39.00

Available from : Motion Smith
 76 Shenton Way #01-01
 Singapore 079119

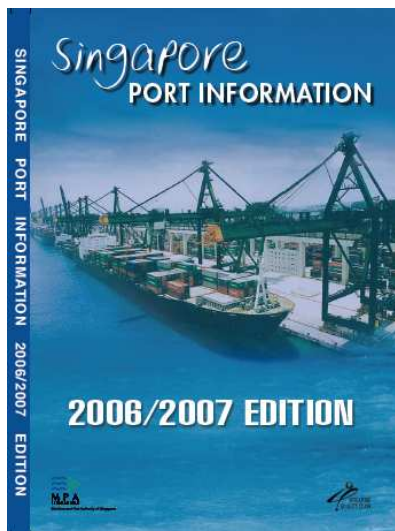
Tel : 6220 5098 (After office hours : Pager No. 9304 4156, 9304 4159)
 Fax : 6225 4902
 E-mail : sales@motsmith.com
 Web Site : <http://www.motsmith.com>

*(NM 22/2005) NEW EDITION DUAL BADGED CHART PUBLISHED 13TH APRIL 2006

Chart No. : 4037
Title : Port of Singapore, Keppel Harbour, Tanjong Pagar Terminal and Approaches
Coverage : Lat 1° 12.52' N - 1° 16.59' N
 Long 103° 49.40' E - 103° 55.34' E
Scale : 1:10 000
Date Published : 13th April 2006
Remarks : This new edition includes new surveys covering Southern Fairway, Eastern Anchorages, Approaches to East Keppel Fairway and Keppel Harbour including Post construction of the Southern Islands. This new edition supersedes the earlier edition published on 22/07/2004.

II NEW PUBLICATIONS

*(NM 23/2006) NEW PUBLICATION



SINGAPORE PORT INFORMATION - 2006/2007 EDITION

Summary of Publication

This publication contains Port Information such as Routing System in the Straits of Malacca and Singapore, important Port Marine Circulars and Notices issued by the Port Master, Characteristics of Aids to Navigation, Port Facilities, IALA Maritime Buoyage System and Chart Catalogue.

To whom will it be useful

Mariners, shipping communities, port users and public.

Frequency/Year of Publication

Biennially

Cost of publication

The price of the publication is S\$15.60 (excluding Goods & Services Tax).

Order Enquires

Motion Smith, 76 Shenton Way #01-01, Singapore 079119

Tel : 6220 5098 (After office hours:
Pager No. 9304 4156, 9304 4159)

Fax : 6225 4902

E-mail : sales@motsmith.com

Internet Web Site at : <http://www.motsmith.com>

Remarks

Information provided in this publication is correct up to the time of printing based on data available at the Hydrographic Department, Maritime and Port Authority of Singapore.


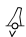





Updates

Any updates to this publication which are critical to safe navigation will be promulgated through the monthly Singaporean Notices to Mariners. These notices can be accessed from MPA webpage:


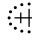
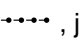
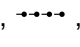
" www.mpa.gov.sg/homepage/publications/noticesmari.html ".

(Previous NM 2/10/2006 is superseded)

II
NOTICES TO MARINERS AND CHART CORRECTIONS


SP1/GSP1	7Ed 01/03/05 Last NM 18/2006	(HD/HE025/039/2006)	*NM 24/2006
Delete	 MDF 2, Fl.Y.4s		1°13.05'N 103°42.65'E
		(HD/HE025/046/2006)	*NM 25/2006
Delete	 MDF 3, Fl.Y.6s		1°12.78'N 103°42.79'E
		(HD/HE025/045/2006)	*NM 26/2006
Delete	 Fl.Y.6s		1°25.36'N 103°54.92'E
		(Admiralty Notices 6/506/2006)	NM 27/2006
Insert	 Obstn		1°10.66'N 103°51.50'E
			1°10.67'N 103°52.01'E
<hr/>			
201	2Ed 15/09/03 Last NM 19/2006	(Marine Dept. Peninsular Malaysia NTM 02/2006)	NM 28/2006
Delete	 Fl.G.5s		2°03.20'N 102°30.24'E
		(Admiralty Notices 6/511/2006)	NM 29/2006
Delete	 LFI.7s		1°20.90'N 102°10.08'E
<hr/>			

II
NOTICES TO MARINERS AND CHART CORRECTIONS

502	3Ed 25/10/05 Last NM 20/2006	(Admiralty Notices 6/506/2006)	NM 27/2006
Insert	 Obstn		1°10.66'N 103°51.50'E
			1°10.67'N 103°52.01'E
		(Admiralty Notices 6/505/2006)	NM 31/2006
Insert	Depth 7_2		1°11.15'N 103°53.20'E
		(HD/Job File No.X315/05)	*NM 32/2006
Insert	Outfall,  , joining:	(a)	1°18.80'N 104°00.45'E 1°18.51'N 104°00.63'E
		(b)	1°17.66'N 104°02.02'E
	Diffuser,  , joining:	(c)	1°17.66'N 104°02.02'E 1°17.30'N 104°02.62'E
	Legend, Outfall (buried) , along:		(a) – (b) above
	Diffusers (see Note) , along:		(b) – (c) above
	Accompanying Block		1°23.42'N 104°13.43'E

II TEMPORARY AND PRELIMINARY NOTICES

201 2Ed 15/09/03 (Admiralty Notices 6/507/2006) **NM 33T/2006**

Substitute  **FI(4)Y** for  (Unlit) 1°09.50'N 103°21.58'E

 **FI.R** for  (Unlit) 1°07.43'N 103°19.31'E

(Previous NM 1/28T/99 is superseded)

(Admiralty Notices 6/510/2006) **NM 34T/2006**

Substitute  **FI.G** for  (Unlit) 1°09.17'N 103°18.75'E

(Previous NM 1/28T/99 is superseded)

202 4Ed 15/11/04 (Admiralty Notices 6/507/2006) **NM 33T/2006**

Substitute  **FI(4)Y** for  (Unlit) 1°09.50'N 103°21.58'E

 **FI.R** for  (Unlit) 1°07.43'N 103°19.31'E

 **FI(2)G** for  (Unlit) 1°04.98'N 103°17.77'E

(Previous NM 1/28T/99 is superseded)

(Admiralty Notices 6/510/2006) **NM 34T/2006**

Substitute  **FI.G** for  (Unlit) 1°09.17'N 103°18.75'E

(Previous NM 1/28T/99 is superseded)

(Indonesia NM 48/460(T)/2006) **NM 35T/2006**

Substitute ★ (Unlit) for ★ FI.R.3s19m12M 00°48.98'N 104°21.07'E

III NAVIGATIONAL INFORMATION

*(NM 36/2006) RECLAMATION AT PULAU ULAR

Date : With effect from 20 Feb 06 to 19 Aug 06.

Location : At Pulau Ular, Pulau Busing and Pulau Bukom Kechil, within a working area bounded by the following co-ordinates (please see chartlet).

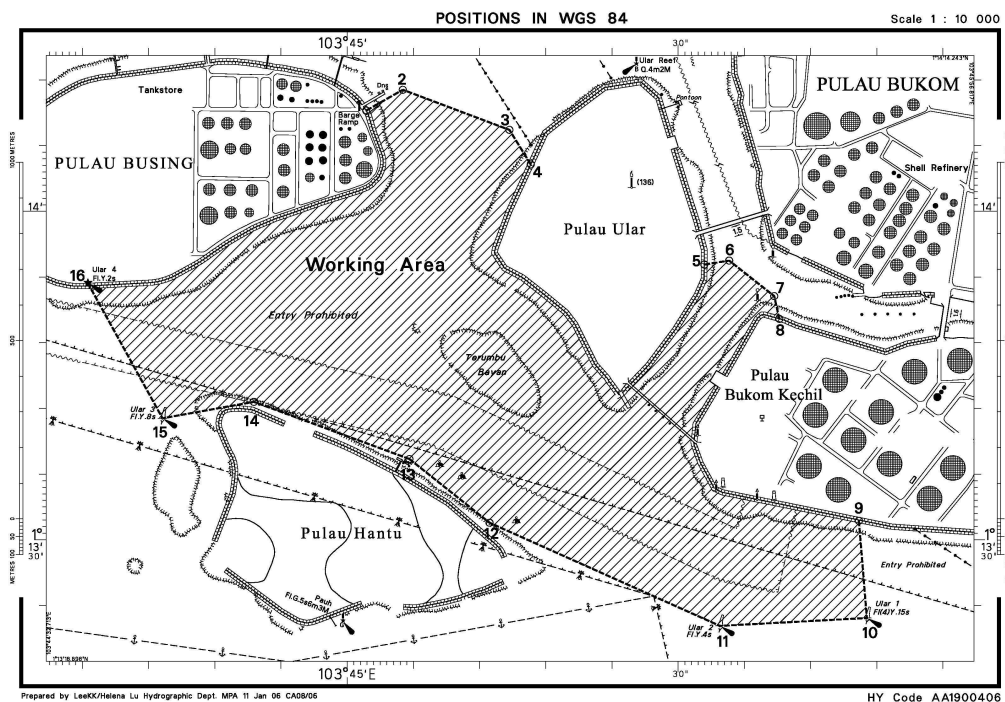
Point	Latitude (N)	Longitude (E)	Point	Latitude (N)	Longitude (E)
1	01°14.153'	103°45.029'	9	01°13.529'	103°45.773'
2	01°14.185'	103°45.084'	10	01°13.381'	103°45.785'
3	01°14.124'	103°45.245'	11	01°13.369'	103°45.563'
4	01°14.071'	103°45.277'	12	01°13.526'	103°45.215'
5	01°13.919'	103° 45.540'	13	01°13.623'	103°45.094'
6	01°13.925'	103° 45.577'	14	01°13.710'	103°44.859'
7	01°13.871'	103° 45.645'	15	01°13.685'	103°44.721'
8	01°13.836'	103° 45.653'	16	01°13.891'	103°44.608'

Name of Marker Buoys	Latitude (N)	Longitude (E)	Buoy and Light Characteristic
Ular 1	01°13.381'	103°45.785'	Yellow pillar, Fl(4)Y.15s
Ular 2	01°13.369'	103°45.563'	Yellow pillar, Fl.Y.4s
Ular 3	01°13.685'	103°44.721'	Yellow pillar, Fl.Y.8s
Ular 4	01°13.891'	103°44.608'	Yellow Trestle, Fl.Y.2s

Working hours : 24 hours daily including Sundays and Public Holidays.

Source : Port Marine Notice No. 13 of 2006, dated 6 Feb 2006.

Charts affected : SP1, GSP1, 4032, 4040.



III
AMENDMENTS TO PUBLICATIONS

***(NM 37/2006) UPDATING OF PUBLICATION "SINGAPORE PORT INFORMATION 2006/2007 EDITION"**

1 Page 123

SELAT PAUH

NAME OF BEACON / BUOY	POSITION IN WGS 84		STRUCTURE COLOUR & SHAPE	LIGHT CHARACTERISTICS
	LAT. (N)	LONG. (E)		

Delete the following from list:

MDF 2 Buoy	01°13.049'	103°42.676'	Yellow pillar	Fl.Y.4s
MDF 3 Buoy	01°12.782'	103°42.793'	Yellow pillar	Fl.Y.6s

Source: HD/HE025 Nos. 039&046/2006

2 Page 159

TUAS POWER STATION – FUEL OIL UNLOADING JETTY (1°16.7'N, 103°38.8'E)

Amend the following:

Berth	Depth Alongside (Year Surveyed)	
	Delete	Insert
Jetty	14.1m(2000)	13.1m(2006)

Source: HY Code G00103606

3 Page 165

Item no. 12 –

JURONG SHIPYARD PTE LTD (NEW SHIP DIVISION (TANJONG KLING)) (1°18.2'N, 103°42.2'E)

Amend the following:

Mooring Quay	Depth Alongside (Year Surveyed)	
	Delete	Insert
West Quay (Tanjong Kling)	4.6m(1996)	4.8m(2005)

Source: HY Code J00104505

IV
REPRINT OF RADIO NAVIGATIONAL WARNINGS

Nil

V
REPRINT OF ADMIRALTY NOTICES TO MARINERS
FOR DUAL BADGED CHARTS

498/06 * SINGAPORE — Keppel Harbour — Brani Terminal — Dredged depth.

Source: Maritime and Port Authority of Singapore DBNM 57/05

Chart 4037 [previous update 2368/05] WGS 84 DATUM

Amend dredged depth to, 13.4m(2005) 1° 15' .841N. , 103° 50' .082E.

505/06 SINGAPORE STRAIT — Indonesia — Batu Berhanti Eastwards — Depths.

Source: Indonesian Chart 44

Chart 4041 [previous update New Edition 01 / 12 / 2005] WGS84 DATUM

Insert depth 7₂ and extend 10m contour N to enclose (a) 1° 11' .15N. , 103° 53' .20E.
 Delete depth 9₁, close S of: (a) above

506/06 SINGAPORE STRAIT — Indonesia — Pulau Lengkana North-westwards — Wreck. Obstruction.

Source: Indonesian Chart 44

Chart 4040 [previous update New Edition 01 / 12 / 2005] WGS84 DATUM

Insert  *Obstn* 1° 10' .66N. , 103° 51' .50E.

Chart 4041 [previous update 505/06] WGS84 DATUM





Insert  *Obstn* 1° 10' .66N. , 103° 51' .50E.
 1° 10' .67N. , 103° 52' .01E.

V
**REPRINT OF ADMIRALTY NOTICES TO MARINERS
 FOR DUAL BADGED CHARTS**

508/06 SINGAPORE — West Jurong Channel — East Samulun Basin — Tanjong Kling — Depths. Dredged depths. Obstructions. Rock.

Source: Maritime and Port Authority of Singapore DBNMs 53-56/05

Chart 4033 [previous update 4580/05] WGS84 DATUM

Insert	depth 1_4	1° 18' .443N. , 103° 41' .783E.
	depth 1_6	1° 18' .406N. , 103° 41' .833E.
	 with seabed character, R	(a) 1° 18' .005N. , 103° 41' .676E.
Substitute	 <i>Obstn</i> for  <i>Obstn</i>	1° 17' .902N. , 103° 41' .404E.
Amend	dredged depth to, <i>5.5m(2005)</i>	1° 18' .374N. , 103° 42' .513E.
	dredged depth to, <i>5.0m(2005)</i>	1° 18' .109N. , 103° 42' .234E.
	dredged depth to, <i>6.2m(2005)</i>	1° 18' .114N. , 103° 42' .388E.
Delete	depth 2_9	1° 18' .434N. , 103° 41' .764E.
	depth 3_1	1° 18' .417N. , 103° 41' .822E.
	depth 4_8 enclosed by 5m contour, adjacent to:  <i>Obstn</i>	(a) above 1° 17' .940N. , 103° 41' .870E.

509/06 * SINGAPORE — Jurong Island South-westwards — Depth.

Source: Maritime and Port Authority of Singapore DBNM 58/05

Chart 4030 [previous update 5263/05] WGS84 DATUM

Insert	depth 18_2	1° 13' .756N. , 103° 39' .185E.
Delete	depth 18_4	1° 13' .760N. , 103° 39' .179E.

Chart 4031 [previous update 4272/05] WGS84 DATUM

Insert	depth 18_2	1° 13' .756N. , 103° 39' .185E.
Delete	depth 18_4	1° 13' .760N. , 103° 39' .179E.

Chart 4038 [previous update New Edition 17 / 11 / 2005] WGS84 DATUM

Substitute	depth 18_2 for depth 18_4	1° 13' .76N. , 103° 39' .18E.
------------	-------------------------------	-------------------------------

Chart 4040 [previous update 506/06] WGS84 DATUM

Substitute	depth 18_2 for depth 18_4	1° 13' .76N. , 103° 39' .18E.
------------	-------------------------------	-------------------------------

V
**REPRINT OF ADMIRALTY NOTICES TO MARINERS
 FOR DUAL BADGED CHARTS**

866/06 * SINGAPORE STRAIT — Indonesia — Pulau Batam — Tanjung Bemban and Tanjung Babi — Reclamation area. Coastline. Breakwaters. Coral. Islet. Legends. Light-beacons. Pontoons. Bridge.

Source: UK Hydrographic Office

Chart 4042 [previous update 5407/05] WGS84 DATUM

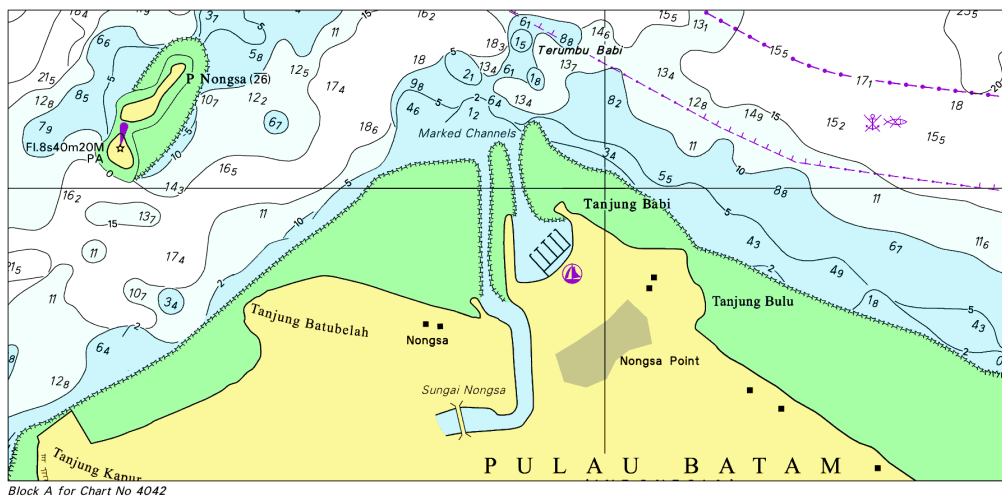
Insert the accompanying block A, showing amendments to reclamation area, coastline, breakwaters, coral, legends, light-beacons, pontoons and bridge, centred on:

1° 11' .83N. , 104° 05' .73E.

the accompanying block B, showing amendments to reclamation area, coastline, breakwaters, coral, islet, legends and light-beacons, centred on:

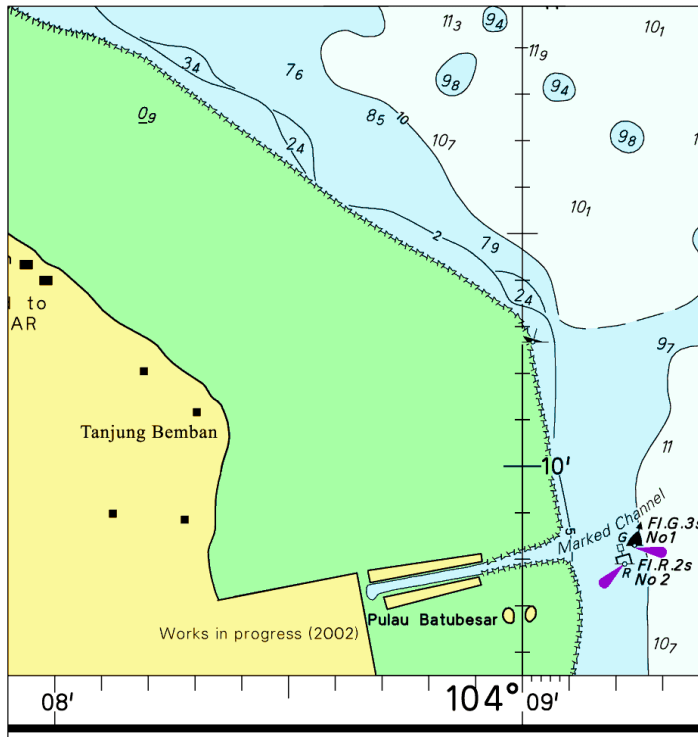
1° 10' .20N. , 104° 08' .65E.

Note: This block correction is for illustration only. The actual block correction should be obtained from the Admiralty Notices to Mariners.



V
REPRINT OF ADMIRALTY NOTICES TO MARINERS
FOR DUAL BADGED CHARTS

Note: This block correction is for illustration only. The actual block correction should be obtained from the Admiralty Notices to Mariners.



Block B for Chart No 4042

MPA ELECTRONIC NAVIGATIONAL CHARTS (ENC) DISTRIBUTORS

Please approach any of the appointed distributors to purchase the Singapore ENC.

PERSON TO CONTACT	ADDRESS	TEL/FAX NO.
Mr Chong Chee Meng General Manager	DPM (Singapore) Pte Ltd 1 Maritime Square, #09-72 Harbour Front Centre, Singapore 099253 Email: sales@dpmsingapore.com.sg Website: http://www.dpmsingapore.com.sg	Tel. No.: +65 6270 4060 Fax No.: +65 6276 3858
Mr Hamzah bin Akhbar CAMS Manager	Kelvin Hughes(S) Pte Ltd 8 Pandan Avenue #02-00, Singapore 609384 Email: hamzah.akhbar@khsing.com Website: http://www.kelvinhughes.co.uk	Tel. No.: +65 6545 9880 ext.24 Fax No.: +65 6545 8892
Mr Philip Loh Sales Manager	Motion Smith 76 Shenton Way #01-01, Singapore 079119 Email: sales@motsmith.com Website: http://www.motsmith.com	Tel. No.: +65 6220 5098 Fax No.: +65 6225 4902
Mr Looi Keen Wai Regional Sales Manager	Transas Marine Pacific Pte Ltd 750C Chai Chee Road, Technopark@Chai Chee #04-07, Singapore 469003 Emails: looi@transas.com.sg Website: www.transas.com.sg	Tel. No.: +65 6443 3061 Fax No.: +65 6443 3025
Mr Choy Kum Weng Manager	Vector Services Pte Ltd 2 Maritime Square #04-12B SP1 Building, Singapore 099255 Email: kwchoy@pacific.net.sg	Tel. No.: +65 6278 7212 Fax No.: +65 6278 7212
Mr George Arts President	Marine Press of Canada Nautical Charts, Books & Services Software & ENC's 640 Rue St-Paul Ouest, Suite 300 Montreal (QC) Canada, H3C1L9 Emails : sales@marinepress.com Website: www.marinepress.com	Tel. No.: (514) 866-8342 Fax No.: (514) 866-9050
Mr Thomas Wilde Superintendent	HanseNautic GmbH Bade & Hornig, Eckardt & Messtorff Herrengarten 31 D-20459 Hamburg, Germany Email: info@HanseNautic.com Website : http://www.HanseNautic.com	Tel. No.: +49 40 374 811-32 Fax No.: +49 40 366 400
Mr Daniel Schwarzwaelder Sales Manager	SevenCs AG + Co. KG Ruhrstrasse 90, D-22761 Hamburg, Germany Email: sales@chartworld.com Website : www.sevencs.com	Tel. No.: +49 40 853 58 6940 Fax No.: +49 40 853 58 6949
Mr Tadahiko KATSURA	Japan Hydrographic Association ENC Service Division 5-3-3 Tsukiji, Chuo-ku Tokyo 104-0045, Japan Emails: enc-support@jha.jp Website: www.jha.jp.com	Tel. No.: +81 3 3543 0752 Fax No.: +81 3 3543 0695
Mr Sea-Young Rhee Foreign Marketing Manager	E_MLX Co. Ltd Ssangyong Research No.2 Lab Sinseong-Dong 100 Yusong-Gu, Daejoen 305-804, Korea (ROK) Email: syrhee@emlx.co.kr	Tel. No.: +82 42 865 1883 Fax No.: +82 42 865 1884
Mr C G Kim	Korean Ocean Development Co. Ltd 2ND Fl, Dongbang Bldg, 25-4, 4 Ga Jungang-Dong, Jung-Gu, Busan, South Korea Email: sales@chartkorea.com Website: http://chartkorea.com	Tel. No.: +82 514 66 0760 Fax No.: +82 514 65 9345

Mr Kjell Nodland	C-Map Norway A/S P.O Box 212 , N-4371 Egersund, Norway Email: market@c-map.no Website : http://www.c-map.no	Tel No.: +47 514 64 700 Fax No: +47 514 64 701
Mr Roar Moe International Marketing Coordinator	Maritime Information System AS (MARIS) Danholmen 25, No.3115 Tonsberg, Norway Emails: roar.moe@maris.no Website: http://www.maris.no	Tel. No.: +47 33 30 42 50 Fax No.: +47 33 30 42 51
Ms Marianne Barstad	PRIMAR STAVANGER Lervigsveien 36, P.O Box 60, N-4001 Stavanger, Norway Email: sales@primar.org Website: http://www.primar-stavanger.org	Tel. No.: +47 51 93 9500 Fax No.: +47 51 93 9501

CHART AGENT FOR MARITIME AND PORT AUTHORITY OF SINGAPORE (MPA) PUBLICATIONS

Agent's name : Motion Smith
Address : 76 Shenton Way # 01-01
Singapore 079119
Telephone : (65) 6220 5098
: (After Office hours: Pager No. 9304 4156, 9304 4159)
Fax No. : (65) 6225 4902
Email : sales@motsmith.com
Internet Web Site : <http://www.motsmith.com>

HYDROGRAPHIC NOTE - Instructions

1. Mariners are requested to notify the Chief Hydrographer, Maritime and Port Authority of Singapore, when new or suspected dangers to navigation are discovered, changes are observed in aids to navigation or where corrections to nautical publications may be necessary. Reports which cannot be confirmed or are lacking in certain details should not be withheld.
2. Any ambiguities of time, positioning and depth should be stressed and any firm expectation of being able to check the information provided on a following voyage should be mentioned.
3. Mariners using satellite position fixing systems, eg. GPS, should provide details of equipment and datum used (where applicable). Where bearings (true or magnetic) are taken visually or by radar to fix a position, it should include more than two objects in order to provide a check on its accuracy. A position may also be defined by bearing and distance from a conspicuous object eg. beacon, lighthouse etc.
4. The note should include a tracing or a digital image of the chart used and the details should be clearly marked.
5. Echo sounders frequently register greater depths than the advertised maximum depth for the equipment, eg. a trace appearing at 50 metres may be in fact be 550 metres or even 1050 metres for equipment whose maximum depth is 500 metres. Erroneous depths caused by 2nd transmission error can usually be recognised by the following:
 - (a) the tracing being weaker than normal for the depth registered,
 - (b) the trace appearing to pass through the transmission line,
 - (c) the feathery nature of the trace.
6. An acknowledgement of receipt will be sent. When a Notice to Mariners is issued, the sender's vessel or name is quoted as the source unless the same information is also received in foreign Notices to Mariners.
7. Reports of shoals, uncharted dangers and defects in aids to navigation may also be made to the appropriate Singapore Port Operations Control Station on VHF Channels 10, 12, 14, 68 or 73.

HYDROGRAPHIC NOTE

To:

Chief Hydrographer
Hydrographic Department
Maritime and Port Authority of Singapore
460 Alexandra Road #20-00 PSA Building
Singapore 119963

Tel: (65) 63751550 or (65) 63751551
Fax: (65) 62787646
Email address: hydrographic@mpa.gov.sg

Sender's Contact Details:

Date:
Name of Vessel:
Address of Sender:
Tel: Fax:
Email Address:

Nature of Observation:

General Location:
Subject:
Position: Lat Long
Charts Used:
Date & Time of Observation:
Details:
.....
.....
Attachment:

Equipment Used:

GPS / DGPS
Type of Position Fixing: Others:
Type of Echo Sounder:
Name and Signature:

Ship' s / Company's stamp:

To accompany Singaporean Notices to Mariners No. 32 of 2006

OUTFALL – DIFFUSERS (1°17.50'N, 104°02.35'E)
Mariners are advised not to anchor or trawl in the vicinity of numerous diffusers.

Block for Chart 502

To accompany Singaporean Notices to Mariners No. 32 of 2006

OUTFALL – DIFFUSERS (1°17.50'N, 104°02.35'E)
Mariners are advised not to anchor or trawl in the vicinity of numerous diffusers.

Block for Chart 502

To accompany Singaporean Notices to Mariners No. 32 of 2006

OUTFALL – DIFFUSERS (1°17.50'N, 104°02.35'E)
Mariners are advised not to anchor or trawl in the vicinity of numerous diffusers.

Block for Chart 502

To accompany Singaporean Notices to Mariners No. 32 of 2006

OUTFALL – DIFFUSERS (1°17.50'N, 104°02.35'E)
Mariners are advised not to anchor or trawl in the vicinity of numerous diffusers.

Block for Chart 502

To accompany Singaporean Notices to Mariners No. 32 of 2006

OUTFALL – DIFFUSERS (1°17.50'N, 104°02.35'E)
Mariners are advised not to anchor or trawl in the vicinity of numerous diffusers.

Block for Chart 502

To accompany Singaporean Notices to Mariners No. 32 of 2006

OUTFALL – DIFFUSERS (1°17.50'N, 104°02.35'E)
Mariners are advised not to anchor or trawl in the vicinity of numerous diffusers.

Block for Chart 502

To accompany Singaporean Notices to Mariners No. 32 of 2006

OUTFALL – DIFFUSERS (1°17.50'N, 104°02.35'E)
Mariners are advised not to anchor or trawl in the vicinity of numerous diffusers.

Block for Chart 502