



## SINGAPOREAN NOTICES TO MARINERS

| SECTION | CONTENT   | Page |
|---------|---|------|
| I       | Index of Charts & Publications                                  | 3    |
| II      | New Charts & Publications                                       | 11   |
|         | Notices to Mariners and Chart Corrections                       | 14   |
|         | Temporary and Preliminary Notices                               | 16   |
| III     | Navigational Information  | 17   |
|         | Amendments to Publications                                      | 18   |
| IV      | Reprint of Radio Navigational Warnings                          | 21   |
| V       | Extract of Admiralty Notices to Mariners for Dual-Badged Charts | 22   |

The monthly Notices to Mariners contain information required to keep charts and publications published by the Hydrographic Department, Maritime and Port Authority of Singapore up-to-date.

Mariners are requested to notify the Chief Hydrographer, Maritime and Port Authority of Singapore, immediately of the discovery of new or suspected dangers to navigation, observed changes to aids to navigation and ways Singaporean Charts and Publications can be improved. The Hydrographic Note on the back page should be used for this purpose.

The monthly Singaporean Notices to Mariners can be accessed directly from the MPA website:

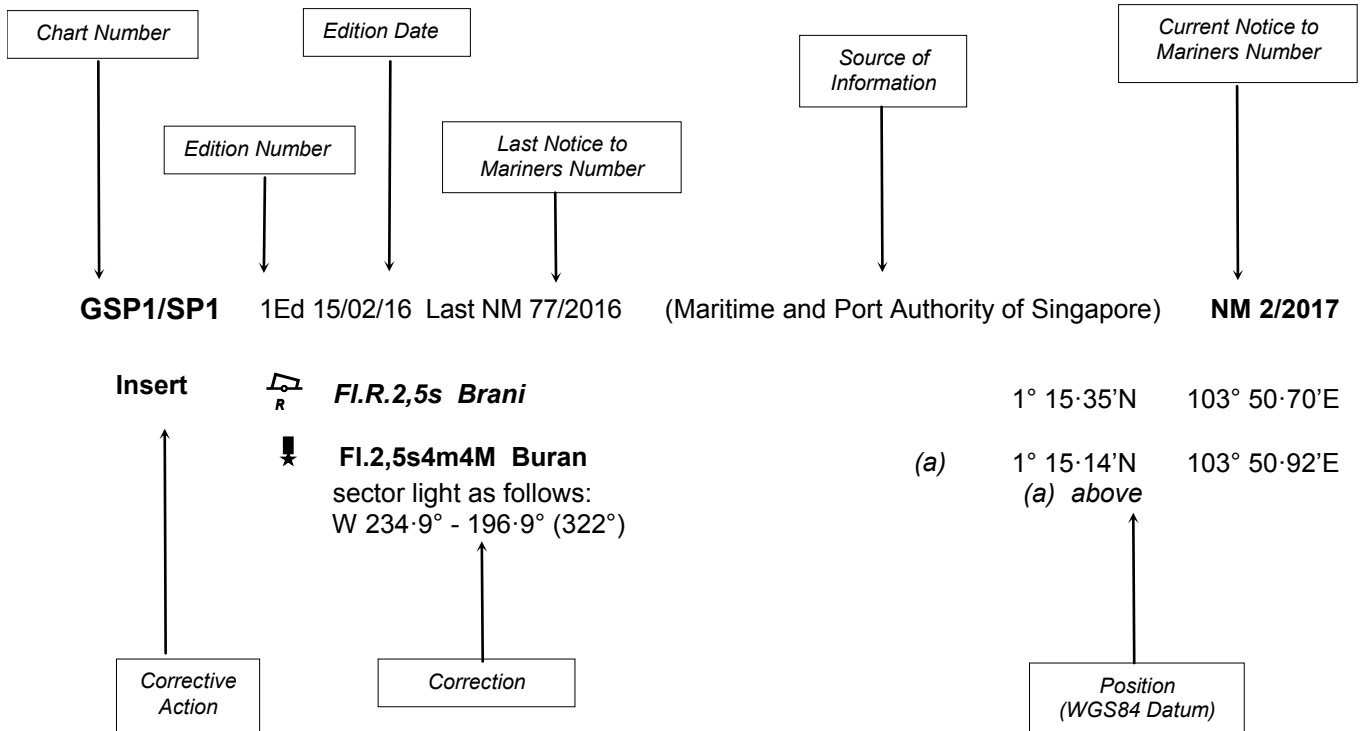
<http://www.mpa.gov.sg/web/portal/home/port-of-singapore/circulars-and-notices/singapore-notices-to-mariners-ntm>

Chief Hydrographer of  
The Maritime and Port Authority of Singapore  
wishes all users  
**A HAPPY NEW YEAR**

Hydrographic Department  
Maritime and Port Authority of Singapore  
7B Keppel Road  
#20-00 Tanjong Pagar Complex  
Singapore 089055  
Tel : (65) 6325 2027  
Fax : (65) 6226 1076  
Email : [hydrographic@mpa.gov.sg](mailto:hydrographic@mpa.gov.sg)  
Website : [www.mpa.gov.sg](http://www.mpa.gov.sg)

## EXPLANATION OF FORMAT

The elements of a typical chart correction are explained below.



### Notes:

- a) Notice to Mariners number followed by:
  - T** indicates a Temporary Notice (eg. **NM 3T/2017**).
  - P** indicates a Preliminary Notice (eg. **NM 4P/2017**).
- b) Bearings are true reckoned clockwise from 000° to 359°; those relating to lights are from seaward.
- c) Heights and elevations are above Mean High Water Springs.

I  
INDEX OF CHARTS AND PUBLICATIONS

INDEX OF AFFECTED CHARTS

| DESCRIPTION  | NOTICE NO.  | PAGE NO. |
|--|-------------|----------|
| Index of Singaporean Charts  | -           | 3, 4     |
| Index of Dual-Badged Charts  | -           | 5 to 8   |
| Index of Singapore Electronic Navigational Chart   | -           | 9        |
| Index of Malacca and Singapore Straits<br>Electronic Navigational Chart                          | -           | 10       |
| New Charts and Publications  | -           | 11       |
| Singapore Tide Tables 2017   | -           | 11 to 13 |
| Numerical Index to Notices to Mariners of 2016   | *1          | 14       |
| Singaporean Chart GSP1/SP1   | *2          | 15       |
| Singaporean Chart 200  | 3           | 15       |
| Singaporean Chart 202  | 4, 6        | 15       |
| Singaporean Chart 500  | 5           | 15       |
| Singaporean Chart 501  | 5           | 15       |
| Singaporean Chart 503  | 4           | 15       |
| Temporary and Preliminary Notices  | -           | 16       |
| Singapore Port Marine Notices/Circulars  | *7          | 17       |
| Amendments to Publications   | *8, *9, *10 | 18 to 20 |
| Reprint of Radio Navigational Warnings   | -           | 21       |
| Extract of Admiralty Notices to Mariners for Dual-Badged<br>Charts                               | -           | 22 to 26 |
| Singapore Electronic Navigational Chart Distributors   | -           | 27       |
| Chart Distributors for the Maritime and Port Authority of<br>Singaporean Charts and Publications | -           | 28       |

\*Source: Maritime and Port Authority of Singapore

I  
INDEX OF CHARTS AND PUBLICATIONS

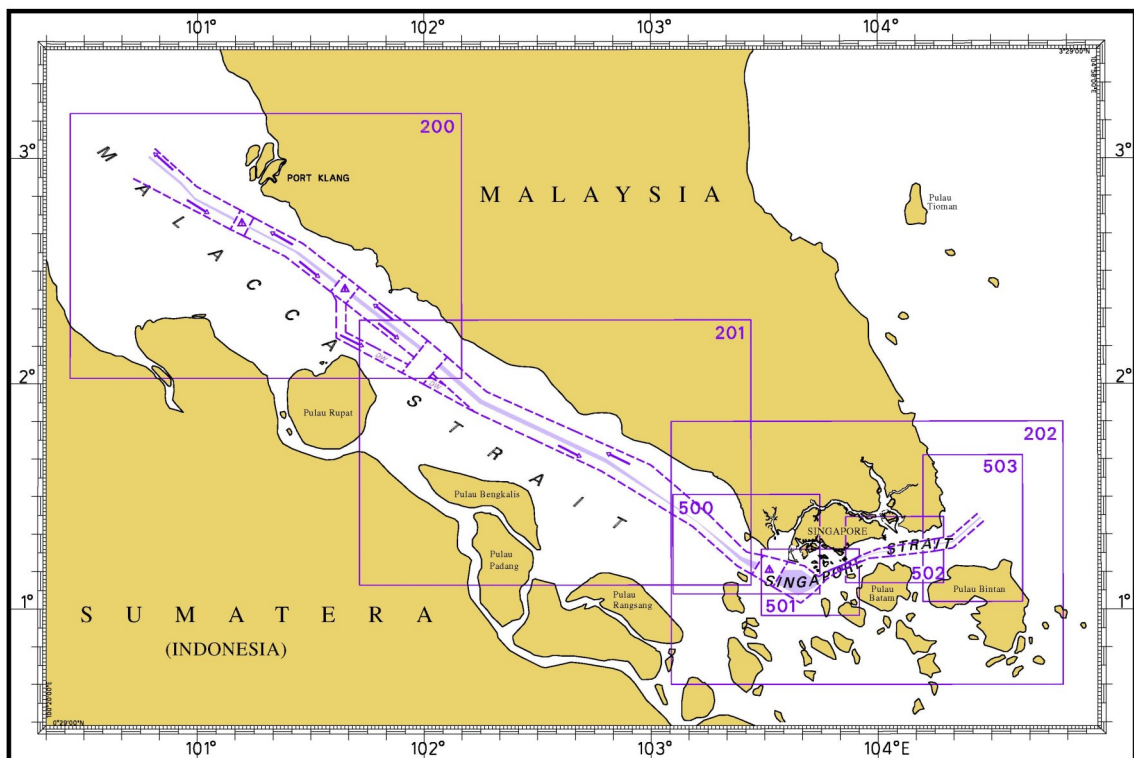
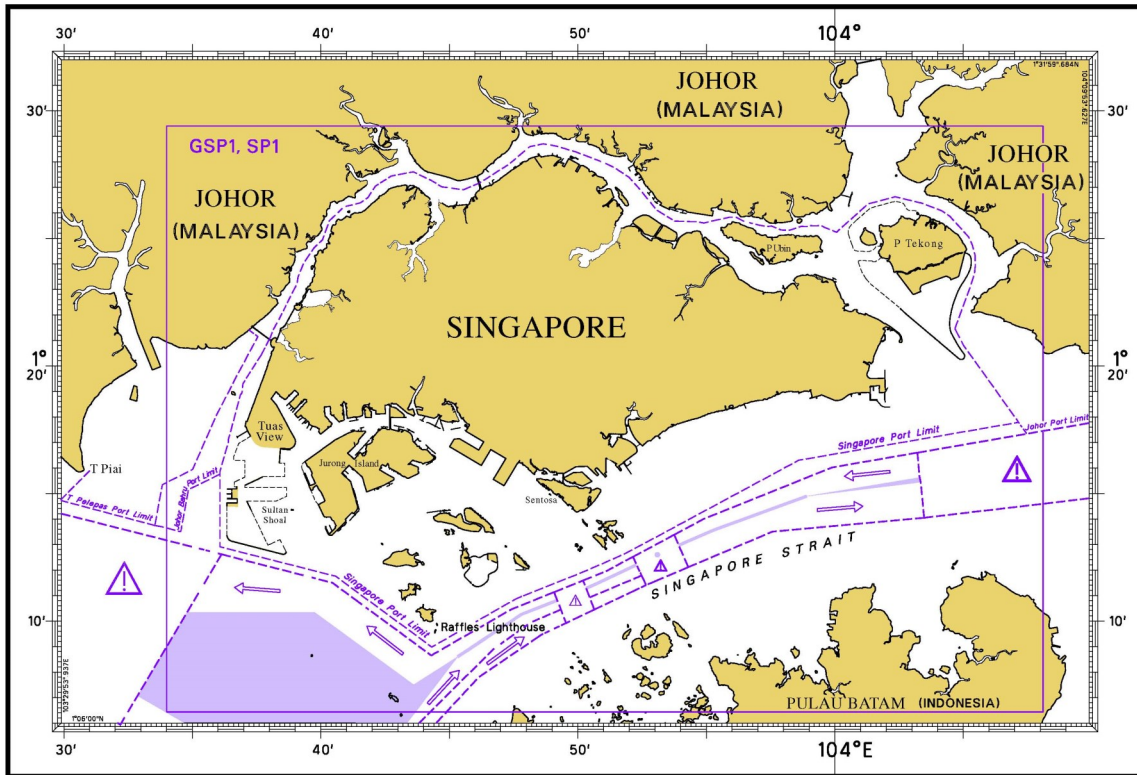
INDEX OF NOTICES

| NOTICE NO.  | DESCRIPTION  | PAGE NO. |
|-------------|--|----------|
| -           | Index of Singaporean Charts  | 3, 4     |
| -           | Index of Dual-Badged Charts  | 5 to 8   |
| -           | Index of Singapore Electronic Navigational Chart   | 9        |
| -           | Index of Malacca and Singapore Straits<br>Electronic Navigational Chart                          | 10       |
| -           | New Charts and Publications  | 11       |
| -           | Singapore Tide Tables 2017   | 11 to 13 |
| *1          | Numerical Index to Notices to Mariners of 2016   | 14       |
| *2          | Singaporean Chart GSP1/SP1   | 15       |
| 3           | Singaporean Chart 200  | 15       |
| 4, 6        | Singaporean Chart 202  | 15       |
| 5           | Singaporean Chart 500  | 15       |
| 5           | Singaporean Chart 501  | 15       |
| 4           | Singaporean Chart 503  | 15       |
| -           | Temporary and Preliminary Notices  | 16       |
| *7          | Singaporean Port Marine Notices/Circulars  | 17       |
| *8, *9, *10 | Amendment to Publications  | 18 to 20 |
| -           | Reprint of Radio Navigational Warnings   | 21       |
| -           | Extract of Admiralty Notices to Mariners for Dual-Badged<br>Charts                               | 22 to 26 |
| -           | Singapore Electronic Navigational Chart Distributors   | 27       |
| -           | Chart Distributors for the Maritime and Port Authority of<br>Singaporean Charts and Publications | 28       |

\*Source: Maritime and Port Authority of Singapore

# I INDEX OF CHARTS AND PUBLICATIONS

## INDEX OF SINGAPOREAN CHARTS



**Notes:**

Singaporean Charts are available through our Print-On-Demand (POD) Chart Service. Print-On-Demand (POD) Charts are the most up-to-date paper nautical charts printed for navigational use. These nautical charts are produced in accordance with the International Hydrographic Organization (IHO) chart specifications. All Singaporean Charts are continually updated to the latest Notices to Mariners before they are printed and sold to users.

## I

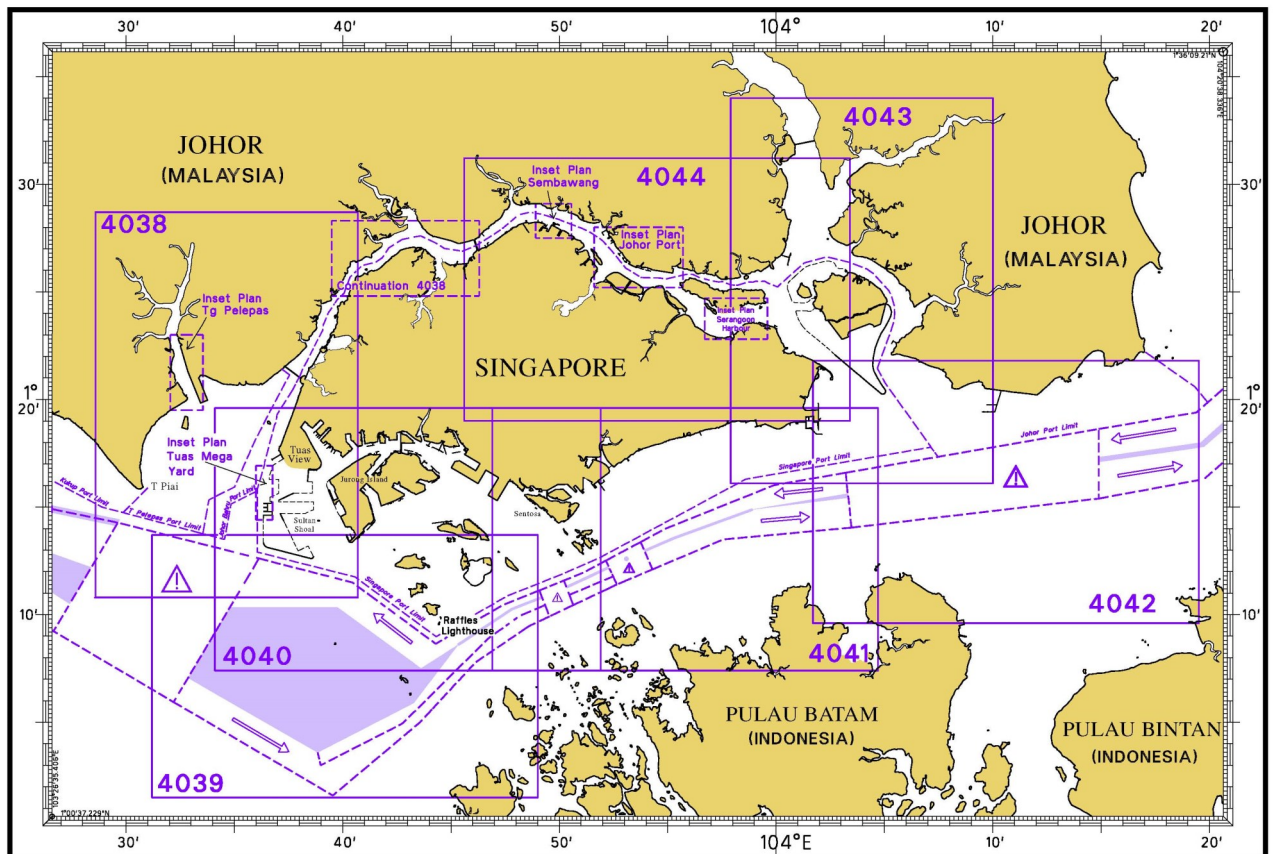
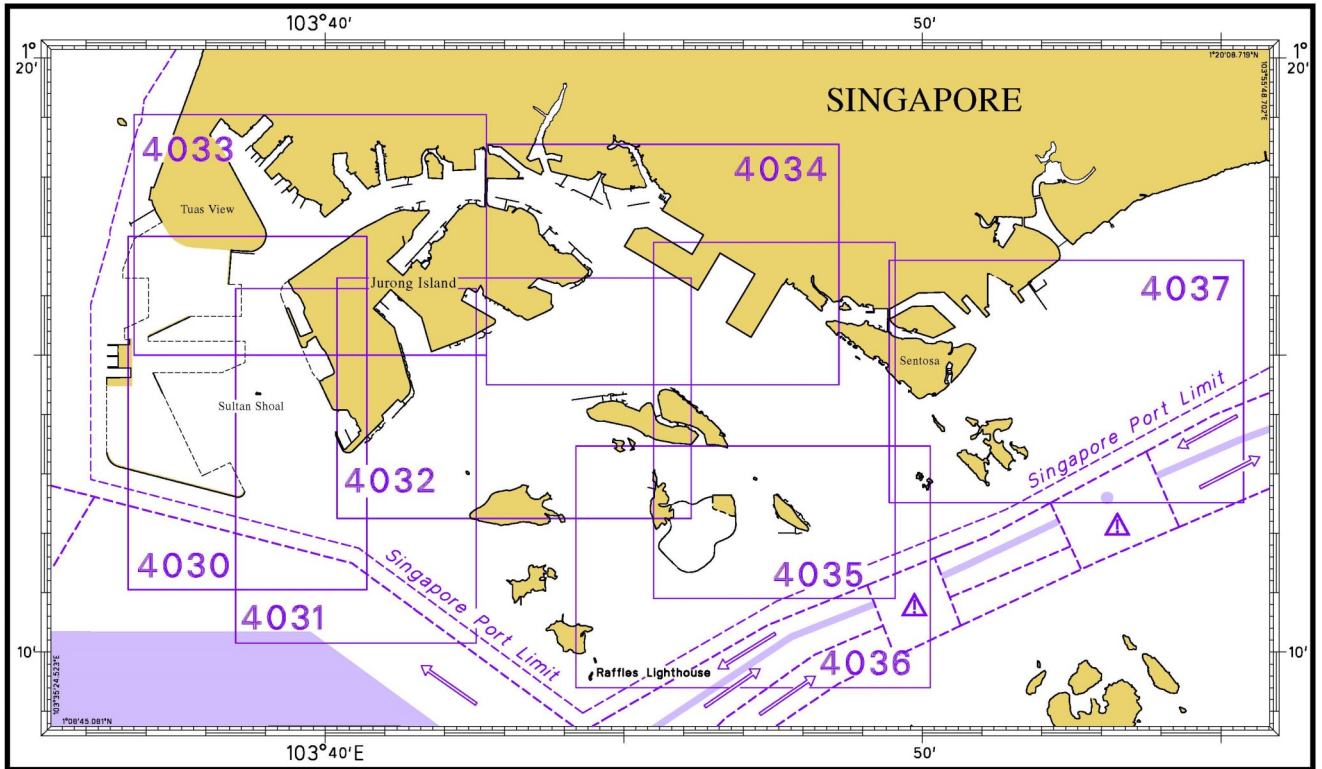
## INDEX OF CHARTS AND PUBLICATIONS

SINGAPOREAN CHARTS

| Chart No. | Chart Title  | Scale 1:          | Date Published of Latest Edition |
|-----------|--|-------------------|----------------------------------|
| GSP1      | Anchorage and Aids to Navigation (with Area Reference)   | 65 000            | 15/02/2016                       |
| SP1       | Anchorage and Aids to Navigation   | 65 000            | 15/02/2016                       |
| 200       | Malacca Strait - Port Klang to Tanjung Keling  | 200 000           | 01/09/2015                       |
| 201       | Malacca Strait - Tanjung Keling to Western Entrance of Singapore Strait  | 200 000           | 15/08/2014                       |
| 202       | Singapore Strait   | 200 000           | 15/09/2016                       |
| 500       | Malacca and Singapore Straits - Pulau Pisang to Raffles Lighthouse   | 75 000            | 26/09/2013                       |
| 501       | Singapore Strait - Western Part  | 50 000            | 01/09/2015                       |
| 502       | Singapore Strait - Eastern Part  | 50 000            | 01/09/2015                       |
| 503       | South China Sea - Eastern Approaches and Entrance to Singapore Strait  | 75 000            | 15/08/2014                       |
| -         | Charts for Small Craft - Singapore Port Waters and Approaches  | 10 000 to 200 000 | January 2016                     |
| 1         | Symbols Abbreviations Terms and S57 Objects used on Singapore Nautical and Electronic Navigational Charts<br><br>Available for download at MPA website:<br><a href="http://www.mpa.gov.sg/web/portal/home/publications/charts-symbols-and-abbreviations">http://www.mpa.gov.sg/web/portal/home/publications/charts-symbols-and-abbreviations</a> | -                 | 28/07/2011                       |

I  
INDEX OF CHARTS AND PUBLICATIONS

DUAL-BADGED CHARTS



I  
INDEX OF CHARTS AND PUBLICATIONS

**DUAL-BADGED CHARTS**

| <b>Chart No.</b> | <b>Chart Title</b>  | <b>Scale 1:</b> | <b>Date Published of Latest Edition</b> |
|------------------|---|-----------------|---|
| 4030             | Port of Singapore<br>West Jurong Anchorages and Temasek Fairway                                 | 10 000          | 17/03/2016                              |
| 4031             | Port of Singapore<br>Western Approaches to Jurong Island  | 10 000          | 17/03/2016                              |
| 4032             | Port of Singapore<br>Sinki Fairway  | 10 000          | 04/08/2016                              |
| 4033             | Port of Singapore<br>Tuas Bay, West Jurong Channel and Pesek Basin                              | 10 000          | 17/03/2016                              |
| 4034             | Port of Singapore<br>East Jurong Channel, Pasir Panjang Terminal and West Keppel Fairway        | 10 000          | 04/08/2016                              |
| 4035             | Port of Singapore<br>Western Anchorages, Jong Fairway and Cruise Bay                            | 10 000          | 28/05/2015                              |
| 4036             | Port of Singapore<br>Raffles Lighthouse to The Sisters  | 10 000          | 28/05/2015                              |
| 4037             | Port of Singapore<br>Keppel Harbour, Tanjong Pagar Terminal and Approaches                      | 10 000          | 28/05/2015                              |
| 4038             | Malaysia and Singapore<br>Johor Strait - Western Part   | 30 000          | 25/02/2016                              |
| 4039             | Indonesia, Singapore and Malaysia<br>Western Approaches to Main Strait                          | 30 000          | 24/04/2014                              |
| 4040             | Singapore, Indonesia and Malaysia<br>Tuas View to Pulau Sakijang Bendera<br>(St. John's Island) | 30 000          | 27/08/2015                              |
| 4041             | Singapore and Indonesia<br>Pulau Sebarok to Changi  | 30 000          | 27/08/2015                              |



## I

**INDEX OF CHARTS AND PUBLICATIONS****DUAL-BADGED CHARTS**

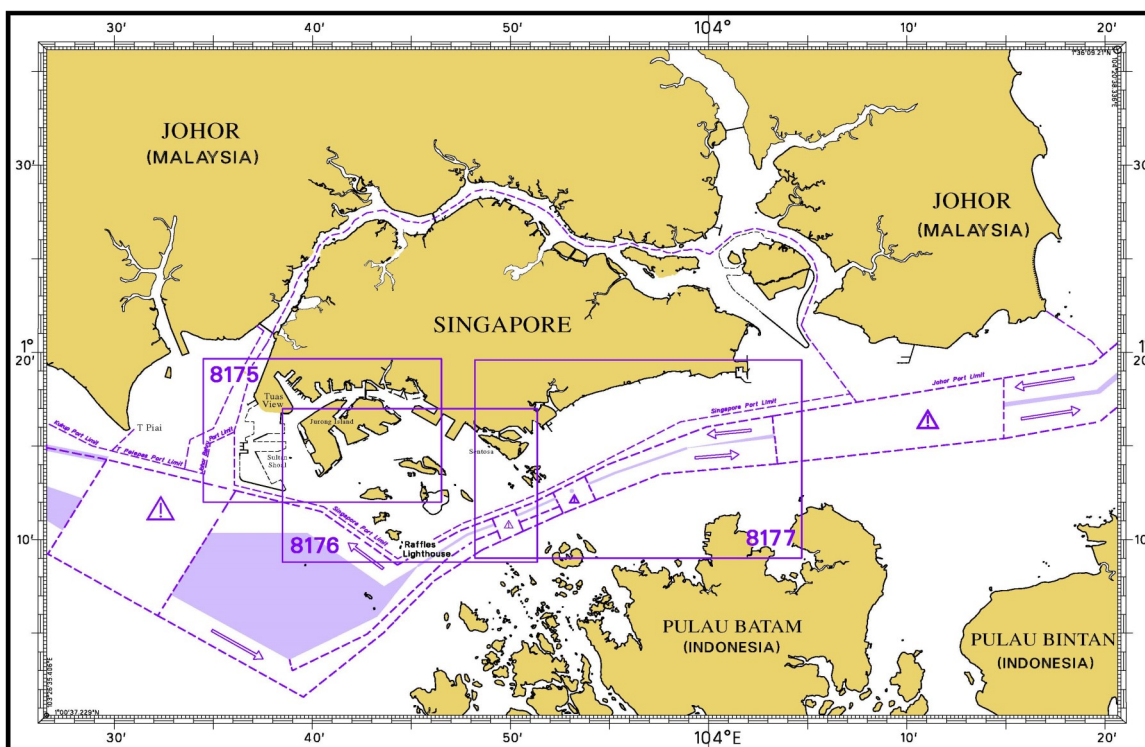
| <b>Chart No.</b> | <b>Chart Title</b>  | <b>Scale 1:</b> | <b>Date Published of Latest Edition</b> |
|------------------|---|-----------------|---|
| 4042             | Indonesia, Malaysia and Singapore<br>Changi to Pulau Mungging and Tanjung Buntan to Tanjung Tondang | 30 000          | 24/04/2014                              |
| 4043             | Malaysia and Singapore<br>Kuala Johor and Sungai Johor  | 30 000          | 16/06/2016                              |
| 4044             | Singapore and Malaysia<br>Johor Strait - Eastern Part   | 30 000          | 16/06/2016                              |

**SINGAPOREAN PUBLICATIONS**

| <b>Item</b> | <b>Title</b>                         | <b>Date Published of Latest Edition</b> |
|-------------|--------------------------------------|---|
| 1           | Singapore Tide Tables Year 2017      | 09/09/2016                              |
| 2           | Singapore Port Information 2016/2017 | 04/01/2016                              |

# I INDEX OF CHARTS AND PUBLICATIONS

## DUAL-BADGED PORT APPROACH GUIDES

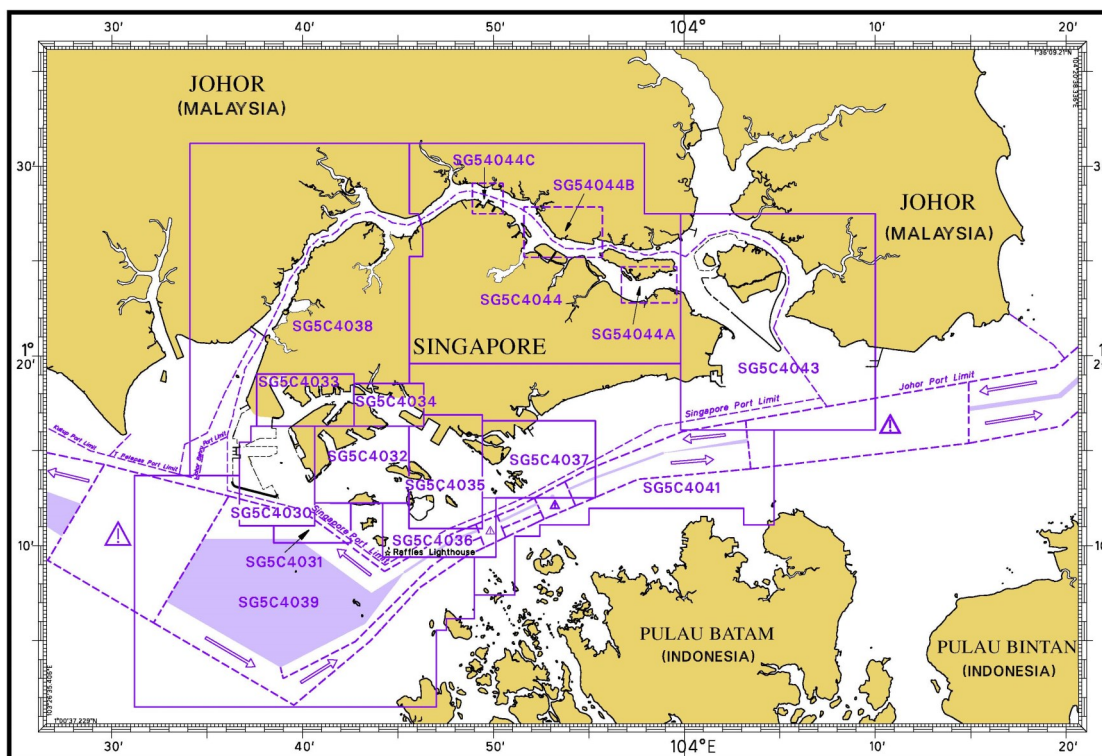


| Chart No. | Chart Title  | Scale 1: | Date Published of Latest Edition |
|-----------|--|----------|----------------------------------|
| 8175      | Port Approach Guide Singapore, Tuas View to Pasir Panjang Terminal including Jurong Channels | 21 500   | 15/09/2016                       |
| 8176      | Port Approach Guide Singapore, Sinki Fairway to Southern Fairway                             | 23 000   | 15/09/2016                       |
| 8177      | Port Approach Guide Singapore, Southern Fairway to Changi                                    | 30 000   | 15/09/2016                       |

Note : The full range of Admiralty Port Approach guides is available from the Admiralty Chart Agents. To find an Admiralty Chart Agent, please visit : <http://www.admiralty.co.uk/how-to-buy>

# I

## INDEX OF CHARTS AND PUBLICATIONS



### SINGAPORE ELECTRONIC NAVIGATIONAL CHART (ENC)

| ENC Name | ENC Coverage  | ENC Edition               |
|----------|---|---------------------------|
| SG5C4030 | West Jurong Anchorages and Temasek Fairway                          | 9th Edition (17/03/2016)  |
| SG5C4031 | Western Approaches to Jurong Island                                 | 8th Edition (17/03/2016)  |
| SG5C4032 | Sinki Fairway   | 11th Edition (4/08/2016)  |
| SG5C4033 | Tuas Bay, West Jurong Channel and Pesek Basin                       | 9th Edition (17/03/2016)  |
| SG5C4034 | East Jurong Channel, Pasir Panjang Terminal and West Keppel Fairway | 14th Edition (4/08/2016)  |
| SG5C4035 | Western Anchorages, Jong Fairway and Cruise Bay                     | 18th Edition (4/08/2016)  |
| SG5C4036 | Raffles Lighthouse to The Sisters                                   | 9th Edition (28/05/2015)  |
| SG5C4037 | Keppel Harbour, Tanjong Pagar Terminal and Approaches               | 9th Edition (28/05/2015)  |
| SG5C4038 | Johor Strait - Western Part   | 9th Edition (25/02/2016)  |
| SG5C4039 | Western Approaches to Main Strait                                   | 8th Edition (27/08/2015)  |
| SG5C4041 | Pulau Sebarok to Changi   | 9th Edition (27/08/2015)  |
| SG5C4043 | Kuala Johor   | 12th Edition (16/06/2016) |
| SG5C4044 | Johor Strait - Eastern Part   | 12th Edition (16/06/2016) |
| SG54044A | Serangoon Harbour   | 3rd Edition (16/06/2016)  |
| SG54044B | Pelabuhan Johor (Johor Port)  | 3rd Edition (16/06/2016)  |
| SG54044C | Sembawang   | 3rd Edition (16/06/2016)  |

The latest edition of the Singapore ENC covering Singapore Waters and their approaches can be found in our monthly Singaporean Notices to Mariners at MPA website: <http://www.mpa.gov.sg/web/portal/home/port-of-singapore/port-operations/charts-tidal-information-aids-to-navigation-hydrography/nautical-charts/singapore-electronic-navigationalchart-enc>



## II

## NEW CHARTS AND PUBLICATIONS

SINGAPORE TIDE TABLES YEAR 2017 PUBLISHED ON 9<sup>TH</sup> SEPTEMBER 2016

## Summary of Publication



This publication contains Tidal Height and Tidal Stream Predictions covering stations in Singapore Port Waters and along the Straits of Malacca and Singapore.

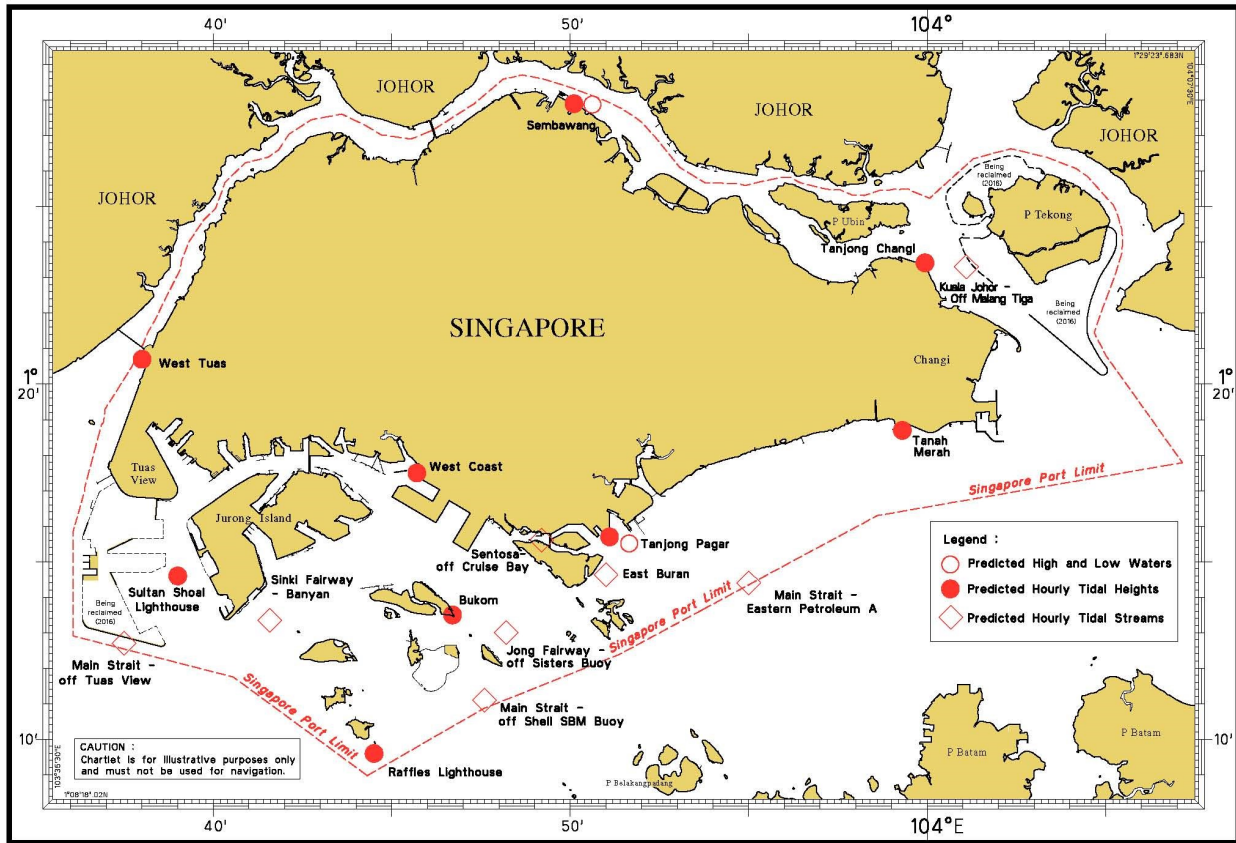
This publication consists of 5 segments.

1. **High and Low Water Predictions** at the following stations:
  - a) Tanjong Pagar
  - b) Sembawang
2. **Hourly Tidal Height Predictions** at the following stations:
  - a) West Tuas
  - b) Sultan Shoal Lighthouse
  - c) Raffles Lighthouse
  - d) West Coast
  - e) Bukom
  - f) Tanjong Pagar
  - g) Tanah Merah
  - h) Tanjong Changi
  - i) Sembawang
  - j) Singapore Strait - Horsburgh Lighthouse
3. **Hourly Tidal Stream Predictions** at the following stations:
  - a) Main Strait - off Tuas View
  - b) Sinki Fairway - Banyan
  - c) Jong Fairway - off Sisters Buoy
  - d) Main Strait - off Shell SBM Buoy
  - e) Sentosa - off Cruise Bay
  - f) East Buran
  - g) Main Strait - Eastern Petroleum A
  - h) Kuala Johor - off Malang Tiga
4. **Maximum and Slack Tidal Stream Predictions** at the following stations
  - a) Malacca Strait - off Pulau Iyu Kecil Light
  - b) Singapore Strait - Selat Philip
  - c) Singapore Strait - Karang Banteng (Buffalo Rock)
  - d) Singapore Strait - Horsburgh Lighthouse
5. **Malacca Strait - High and Low Water Predictions** at the following stations:
  - a) Kedah Pier, Pulau Pinang
  - b) Port Dickson
  - c) Kuala Batu Pahat

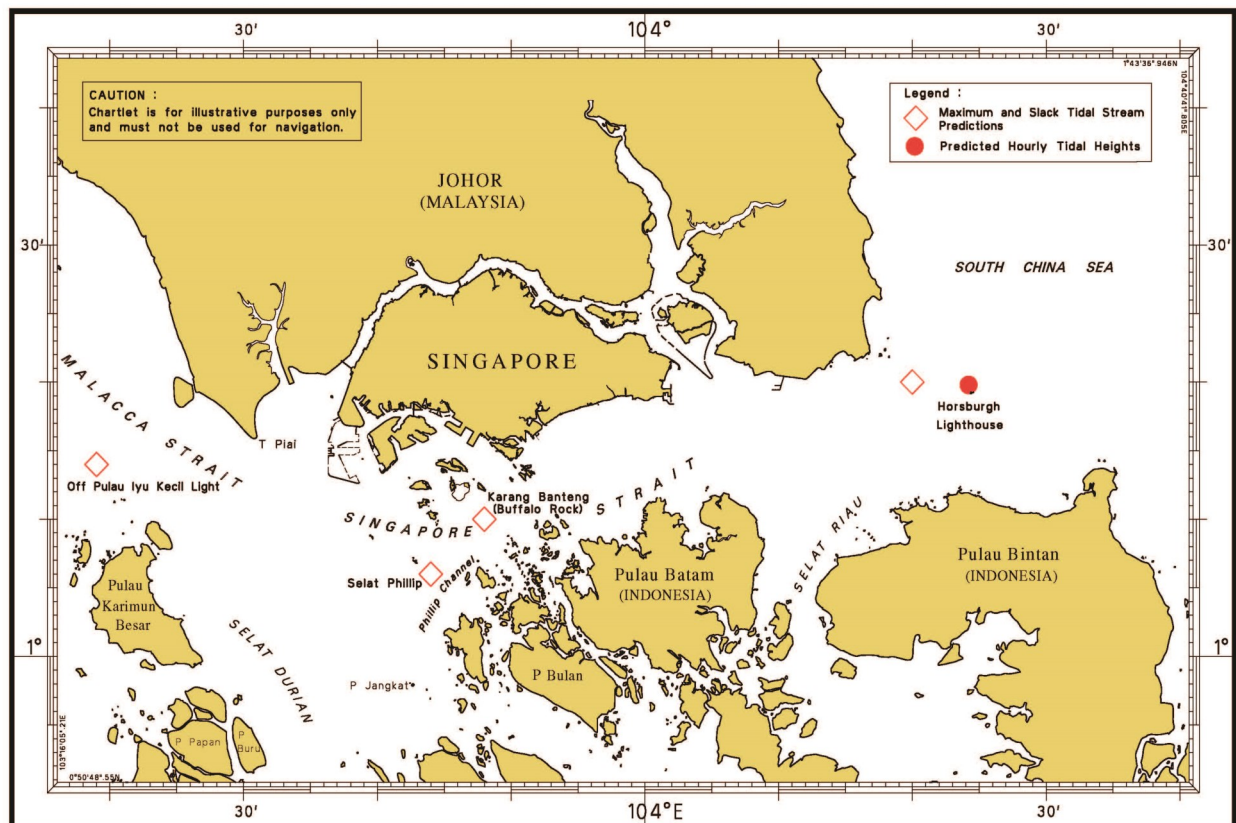
The locations of the above stations are shown in the chartlets below:

## II NEW CHARTS AND PUBLICATIONS

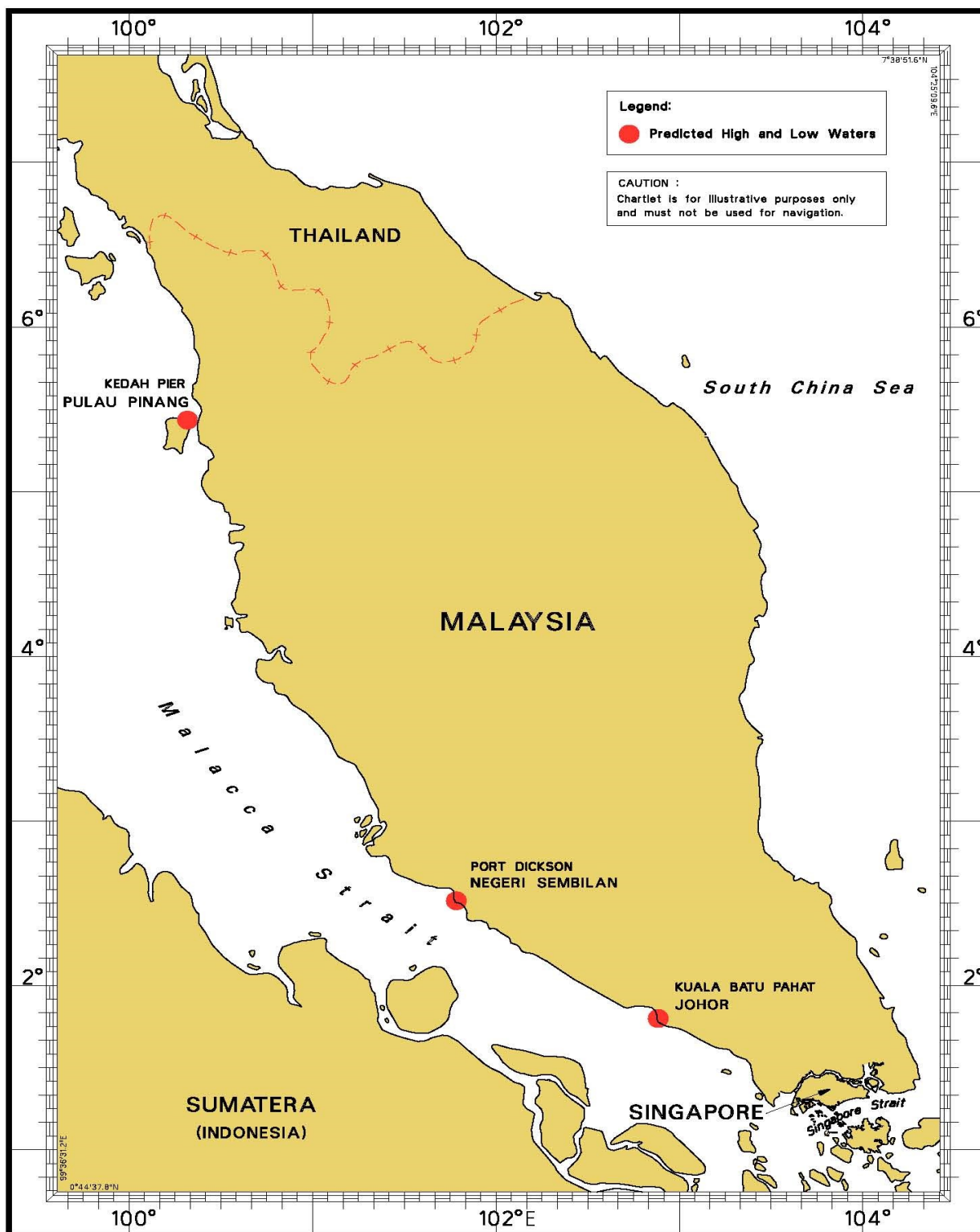
### Tidal Prediction Stations within Singapore Port Waters



### Tidal Prediction Stations in Straits of Malacca and Singapore



II  
**NEW CHARTS AND PUBLICATIONS**  
**Tidal Prediction Stations in Malacca Strait**



This publication is available from the following Chart Distributors:

1. Chartco (Singapore) Pte Ltd
2. Cornes (Singapore) Pte Ltd
3. E.W. Limer Charts & Publications Pte Ltd
4. Global Navigation Solutions Ltd
5. Motion Smith

(Please refer Page 28 for details)

## II

## NOTICES TO MARINERS AND CHART CORRECTIONS

## \*(NM 1/2017) NUMERICAL INDEX TO NOTICES TO MARINERS OF 2016 (1 TO 81)

| MONTH          | NOTICES TO MARINERS NO. |
|----------------|-------------------------|
| JANUARY 2016   | 1 to 6                  |
| FEBRUARY 2016  | 7 to 15                 |
| MARCH 2016     | 16 to 21                |
| APRIL 2016     | 22 to 29                |
| MAY 2016       | 30 to 36                |
| JUNE 2016      | 37 to 45                |
| JULY 2016      | 46 to 54                |
| AUGUST 2016    | 55 to 59                |
| SEPTEMBER 2016 | 60 to 66                |
| OCTOBER 2016   | 67 to 70                |
| NOVEMBER 2016  | 71 to 76                |
| DECEMBER 2016  | 77 to 81                |

---










| CHART NO. | PUBLISHED     | YEAR | NOTICES TO MARINERS NO.                            |
|-----------|---------------|------|--|
| GSP1, SP1 | 1 Ed 15/02/16 | 2016 | 22-23-24-25-37-38-39-40-47-48-49-55-56-71<br>72-77 |
| 200       | 4 Ed 1/09/15  | 2016 | 30-31-41-42  |
| 201       | 5 Ed 15/08/14 | 2016 | 61   |
| 202       | 8Ed 15/09/16  | 2016 | 73   |
| 500       | 7 Ed 26/09/13 | 2016 | 3-7-61-62-73                                       |
| 501       | 7 Ed 1/09/15  | 2016 | 9-10-23-24-62-77                                   |
| 502       | 7 Ed 1/09/15  | 2016 | 9-10-23-24-25-26-33-50-51-72-74-77-78              |
| 503       | 5 Ed 15/08/14 | 2016 | 17-32-63-74  |

---



## II

## NOTICES TO MARINERS AND CHART CORRECTIONS

|                 |   |   |            |                  |
|-----------------|---|---|------------|------------------|
| <b>GSP1/SP1</b> | 1 Ed 15/02/16 Last NM 77/2016   | (Maritime and Port Authority of Singapore)  |            | <b>NM 2/2017</b> |
| <b>Insert</b>   |  <b>Fl.Y.10s TK-MB-9</b>                 |   | 1°21·66'N  | 104°03·08'E      |
|                 |  <b>Fl.Y.10s TK-MB-10</b>                |   | 1°21·78'N  | 104°02·94'E      |
|                 |  <b>Fl.Y.3s(sync), TK-MB-11</b>          |   | 1°23·26'N  | 104°01·21'E      |
|                 |  <b>Fl.Y.3s(sync), TK-MB-12</b>          |   | 1°23·13'N  | 104°01·34'E      |
| <b>200</b>      | 4 Ed 01/09/15 Last NM 42/2016   | (Royal Malaysian Navy Notice No. 11/213/16) |            | <b>NM 3/2017</b> |
| <b>Amend</b>    | dredged depth to, <b>17.3m</b> centred on:  |   | 2°52·83'N  | 101°15·51'E      |
| <b>202</b>      | 8 Ed 15/09/16 Last NM 73/2016   | (Indonesian Notice No. 51/631/16)           |            | <b>NM 4/2017</b> |
| <b>Insert</b>   |  <b>Fl.Y.3s</b> with radar reflector     |   | 1°12·90'N  | 104°36·65'E      |
|                 |   | (Indonesian Notice No. 51/633/16)           |            | <b>NM 6/2017</b> |
| <b>Insert</b>   |  <b>Fl.4s15m12M</b>                      | (a)   | 00°40·38'N | 103°43·62'E      |
|                 | <b>symbol, radar reflector at light-beacon</b>  |   | (a) above  |                  |
| <b>500</b>      | 7 Ed 26/09/13 Last NM 73/2016   | (Indonesian Notice No. 51/632/16)           |            | <b>NM 5/2017</b> |
| <b>Insert</b>   |  <b>Fl.Y.3,5s</b> with radar reflector |   | 1°06·00'N  | 103°43·01'E      |
| <b>501</b>      | 7 Ed 01/09/15 Last NM 77/2016   | (Indonesian Notice No. 51/632/16)           |            | <b>NM 5/2017</b> |
| <b>Insert</b>   |  <b>Fl.Y.3,5s</b> with radar reflector |   | 1°06·00'N  | 103°43·01'E      |
| <b>503</b>      | 5 Ed 15/08/14 Last NM 74/2016   | (Indonesian Notice No. 51/631/16)           |            | <b>NM 4/2017</b> |
| <b>Insert</b>   |  <b>Fl.Y.3s4M</b> with radar reflector |   | 1°12·90'N  | 104°36·65'E      |

**II**  
**TEMPORARY AND PRELIMINARY NOTICES**

NIL

### III NAVIGATIONAL INFORMATION

#### \*(NM 7/2017) SINGAPORE PORT MARINE NOTICES/CIRCULARS

The Port Marine Notices/Circulars shortlisted below would be of particular interest to Mariners. Details and complete list of Port Marine Notices/Circulars are available at this link:

<http://www.mpa.gov.sg/web/portal/home/port-of-singapore/circulars-and-notices>

| <b>PMN No.</b> | <b>Subject</b>  |
|----------------|---|
| 73/2016        | Reclamation and soil investigation works off Tuas   |
| 77/2016        | Works at Tuas Terminal Phase 1  |
| 80/2016        | Dredging work off western end of Jurong Island  |
| 86/2016        | Dredging works at Temasek Fairway   |
| 87/2016        | Maintenance dredging work in Sungei Pandan  |
| 90/2016        | Soil investigation works at Tuas View Extension   |
| 99/2016        | Construction of temporary jetty and RoRo Ramp in Tuas View Basin and at Tuas Staging Ground |
| 104/2016       | Caisson towing operations at Tuas reclamation area  |
| 107/2016       | Reclamation work at western part of Tuas View Extension                                     |
| 108/2016       | Mooring and unmooring of vessels off Pulau Tekong   |
| 109/2016       | Reclamation work at western part of Tuas View Extension                                     |
| 113/2016       | Reclamation work off Temasek Fairway, west of Jurong Island                                 |
| 114/2016       | Mooring and unmooring of vessels off Jurong Island, off Temasek Fairway                     |
| 117/2016       | Seawall opening and submarine cable diversion works off Ayer Merbau Basin and Selat Pandan  |
| 123/2016       | Mooring and unmooring of vessels off eastern part of Tuas View Extension                    |
| 125/2016       | Reclamation work at Tuas View off Temasek Fairway   |
| 126/2016       | Mooring and unmooring of vessels at Tuas Finger One project area                            |
| 128/2016       | Soil investigation works off Woodlands Oil Pier (Shell)                                     |
| 133/2016       | Transport of sand material to stockpile area at Tuas View Extension                         |
| 135/2016       | Exercising safety and vigilance during festive seasons                                      |
| 139/2016       | Construction of new landing pontoon and upgrading of existing pier at West Coast Pier       |
| 140/2016       | Construction of jetty at Petrochemical Corporation of Singapore (PCS), Jurong Island        |

---

| <b>PMC No.</b> | <b>Subject</b>                                    |
|----------------|---|
| 17/2016        | New online function (change of agency) in MARINET |

---

\*Source: Maritime and Port Authority of Singapore

### III AMENDMENTS TO PUBLICATIONS

\*(NM 8/2017) UPDATING OF PUBLICATION "SINGAPORE PORT INFORMATION 2016/2017"

#### CHARACTERISTICS OF AIDS TO NAVIGATION

1. Page 158

**Pulau Tekong**

Insert the following:

| Name of Beacon/Buoy | Position<br>Lat.N<br>Long.E<br>Deg Min | Structure, Colour &<br>Shape | Light<br>Characteristic | Owner    |
|---------------------|--|------------------------------|-------------------------|----------|
| TK-MB-9             | 01°21·659'<br>104°03·082'              | Yellow drum                  | Fl.Y.10s                | Santarli |
| TK-MB-10            | 01°21·781'<br>104°02·938'              | Yellow drum                  | Fl.Y.10s                | Santarli |
| TK-MB-11            | 01°26·260'<br>104°01·205'              | Yellow drum                  | Fl.Y.3s (sync)          | HDEC     |
| TK-MB-12            | 01°23·127'<br>104°01·337'              | Yellow drum                  | Fl.Y.3s (sync)          | HDEC     |

#### WHARVES AND BERTHS

2. Page 166

**19 JURONG ISLAND (SEBACORP INDUSTRIES LTD)(1°15·2'N, 103°42·1'E)**

Amend the following:

| Berth | Length of Berth Box | Min LOA | Max LOA | Min DWT | Max DWT | Depth Alongside (Year Surveyed) | Controlling Depth In Approaches |
|-------|---------------------|---------|---------|---------|---------|---------------------------------|---------------------------------|
| 3     | 268m                | 76m     | 223m    | 2000T   | 45000T  | 13.2m (2005)                    | 12.3m                           |

3. Page 169

**29 JURONG ISLAND (CHEVRON ORONITE PTE LTD)(1°15·1'N, 103°42·1'E)**

Amend the following:

| Berth | Length of Berth Box | Max LOA | Depth Alongside (Year Surveyed) | Controlling Depth In Approaches |
|-------|---------------------|---------|---------------------------------|---------------------------------|
| 4     | 212m                | 180m    | 14.1m (2014)                    | 12.5m                           |

\*Source: Maritime and Port Authority of Singapore

**III**  
**AMENDMENTS TO PUBLICATIONS**

4. Page 205

**MARITIME AND PORT AUTHORITY OF SINGAPORE NAUTICAL CHARTS AND PUBLICATIONS  
DISTRIBUTORS**

Amend the following:

**Chart Distributor** : **Global Navigation Solutions Ltd**  
2 Boon Leat Terrace #05-02/03/04,  
**Address** : Harbourside Building 2  
Singapore 119844

**Telephone** : (65) 6270 4060  
(After Office hours: (65) 9632 5268)

**Fax** : (65) 6276 3858

**Email** : sg.info@gnsworldwide.com

**Internet Web Site** : <http://www.gnsworldwide.com>

5. Page 206

**MPA APPOINTED ELECTRONIC NAVIGATIONAL CHART (ENC) DISTRIBUTORS**

Amend the following:

| <b>DISTRIBUTOR</b>                         | <b>ADDRESS</b>  | <b>TELEPHONE/FAX NO./EMAIL/<br/>WEBSITE</b>   |
|--|---|---|
| <b>Global Navigation<br/>Solutions Ltd</b> | 2 Boon Leat Terrace #05-02/03/04,<br>Harbourside Building 2<br>Singapore 119844 | Tel No.: +65 6270 4060<br>Fax No.: +65 6276 3858<br>Email: sg.info@gnsworldwide.com<br>Website: <a href="http://www.gnsworldwide.com">http://www.gnsworldwide.com</a> |

\*Source: Maritime and Port Authority of Singapore

**III**  
**AMENDMENTS TO PUBLICATIONS**

**\*(NM 9/2017) UPDATING OF PUBLICATION “SINGAPORE TIDE TABLES 2016”**

1. Page 275

**DISTRIBUTORS FOR THE MARITIME AND PORT AUTHORITY OF SINGAPORE PUBLICATIONS**

**Amend the following:**

**Chart Distributor** : **Global Navigation Solutions Ltd**

**Address** : 2 Boon Leat Terrace #05-02/03/04,  
Harbourside Building 2  
Singapore 119844

**Telephone** : (65) 6270 4060  
(After Office hours: (65) 9632 5268)

**Fax** : (65) 6276 3858

**Email** : [sg.info@gnsworldwide.com](mailto:sg.info@gnsworldwide.com)

**Internet Web Site** : <http://www.gnsworldwide.com>

**\*(NM 10/2017) UPDATING OF PUBLICATION “SINGAPORE TIDE TABLES 2017”**

1. Page 275

**DISTRIBUTORS FOR THE MARITIME AND PORT AUTHORITY OF SINGAPORE PUBLICATIONS**

**Amend the following:**

**Chart Distributor** : **Global Navigation Solutions Ltd**

**Address** : 2 Boon Leat Terrace #05-02/03/04,  
Harbourside Building 2  
Singapore 119844

**Telephone** : (65) 6270 4060  
(After Office hours: (65) 9632 5268)

**Fax** : (65) 6276 3858

**Email** : [sg.info@gnsworldwide.com](mailto:sg.info@gnsworldwide.com)

**Internet Web Site** : <http://www.gnsworldwide.com>

\*Source: Maritime and Port Authority of Singapore

## IV REPRINT OF RADIO NAVIGATIONAL WARNINGS

The following Radio Navigational Warnings have been shortlisted, as they would be of particular interest to mariners.

TT175

VESSELS IN EAST JOHOR STRAIT ARE ADVISED TO NAVIGATE WITH PARTICULAR ALERTNESS AND CAUTION WHEN NEAR PROJECT AREAS OFF PULAU TEKONG, CHANGI AND MALANG PAPAN AS SHALLOW WATER AREA EXIST. VESSELS ARE REMINDED TO PROCEED AT SAFE SPEED AND MAINTAIN A PROPER LOOKOUT, PARTICULARLY FOR TUGS AND BARGES NAVIGATING NEAR THE PROJECT AREAS AND PASSENGER FERRIES CROSSING BETWEEN CHANGI AND PULAU TEKONG AND VICINITY OF PASIR GUDANG.

TT273

ALL VESSELS ARE ADVISED TO NAVIGATE WITH CAUTION, COMPLY WITH THE INTERNATIONAL COLLISION REGULATIONS, MAINTAIN VHF RADIO WATCH AND LISTEN TO TRAFFIC INFORMATION WHEN NAVIGATING IN THE SINGAPORE STRAIT AND PORT WATERS. MARINERS ARE ALSO ADVISED TO KEEP A GOOD LOOKOUT OF FREQUENT FERRIES CROSSING THE SINGAPORE STRAIT.

TT363

MARINERS ARE REMINDED NOT TO ANCHOR IN ALL AREAS IN THE TSS OF THE STRAITS OF MALACCA AND SINGAPORE AS WELL AS BETWEEN THE LANDWARD LIMITS OF THE TSS AND APPROACHES TO THE PORTS. VESSELS ENTERING ANY PORT IN ANY LITTORAL STATES ARE TO ANCHOR IN THE ANCHORAGES DESIGNATED BY THE RESPECTIVE LITTORAL STATES ONLY.

TT961

VESSELS INTENDING TO CROSS THE TRAFFIC SEPERATION SCHEME (TSS) OR PRECAUTIONARY AREAS IN THE SINGAPORE STRAIT DURING HOURS OF DARKNESS ARE RECOMMENDED TO DISPLAY THE NIGHT SIGNALS CONSISTING OF 3 ALL ROUND GREEN LIGHTS IN A VERTICAL LINE AS DETAILED IN MARITIME AND PORT AUTHORITY OF SINGAPORE'S PORT MARINE CIRCULAR, 02 OF 2011 DATED 30 MAY 2011.

SR123

SEA ROBBERIES ARE REPORTED IN THE SINGAPORE STRAIT. ALL VESSELS ARE REMINDED TO MAINTAIN A PROPER LOOK-OUT AND REPORT ANY SUSPICIOUS CRAFT TO VTIS SINGAPORE.

ISSUED BY SINGAPORE PORT OPERATIONS CONTROL CENTRE (as at 25<sup>th</sup> Dec 2016)

---

**V**  
**EXTRACT OF ADMIRALTY NOTICES TO MARINERS**  
**FOR DUAL-BADGED CHARTS**

These notices can also be accessed directly from UKHO Website:

<http://www.admiralty.co.uk/maritime-safety-information/admiralty-notices-to-mariners>

**6018 MALAYSIA - Peninsular Malaysia, West Coast - Pelabuhan Tanjung Pelepas - NM Block.**

Source: Malaysian Notice 8/157/16

**Chart 4038 (Panel B, Pelabuhan Tanjung Pelepas)** [previous update 5246/16] WGS84 DATUM

Insert the accompanying block, centred on: 1°21·5'N 103°32·2'E

**6091 SINGAPORE - Jurong Island - Pesek Basin - Dredged depths.**

Source: Maritime and Port Authority of Singapore

**Chart 4033** [previous update 4636/16] WGS84 DATUM

Amend dredged depth to, **10.9m (2016)**, centred on: 1°17·505'N 103°42·214'E

dredged depth to, **11.5m (2016)**, centred on: 1°17·202'N 103°41·968'E

**6093\* SINGAPORE - Beting Tekong - Buoy.**

Source: Maritime and Port Authority of Singapore

**Chart 4044** [previous update New Edition 16/06/2016] WGS84 DATUM

Amend designation of buoy to, **BC5** 1°26·41'N 104°01·38'E

**6106(P)/16 SINGAPORE - Port Approach Guide Singapore - Dredged depths**

Source: Maritime and Port Authority of Singapore

1.


| Update | Feature                                      | Position                |
|--------|--|-------------------------|
| Amend  | dredged depth to, <b>11.5m</b> , centred on: | 1°17·200'N 103°41·965'E |
|        | dredged depth to, <b>10.9m</b> , centred on: | 1°17·505'N 103°42·210'E |

**Chart affected - 8175**

**6112 SINGAPORE - Kuala Johor and Teluk Ramunia - Buoyage.**

Source: Maritime and Port Authority of Singapore

**Chart 4042** [previous update 3315/16] WGS84 DATUM

Insert  **Fl.Y.8s TK-MB-8** 1°20·83'N 104°04·06'E

 **Fl.Y.8s TK-MB-7** 1°20·71'N 104°04·21'E

 **Fl.Y.5s** 1°20·96'N 104°14·43'E

 **Fl.Y.5s** 1°21·14'N 104°15·44'E



**V**  
**EXTRACT OF ADMIRALTY NOTICES TO MARINERS**  
**FOR DUAL-BADGED CHARTS**

**6112 SINGAPORE - Kuala Johor and Teluk Ramunia - Buoyage.**

Source: Maritime and Port Authority of Singapore

**Chart 4043** [previous update New Edition 16/06/2016] WGS84 DATUM

|        |  |                       |
|--------|--|-----------------------|
| Insert |  <b>Fl.Y.8s TK-MB-8</b> | 1°20·83'N 104°04·06'E |
|--------|--|-----------------------|

|  |  |                       |
|--|--|-----------------------|
|  |  <b>Fl.Y.8s TK-MB-7</b> | 1°20·71'N 104°04·21'E |
|--|--|-----------------------|

**6277 SINGAPORE - East Jurong Channel - Pasir Panjang Terminal - NM Block.**

Source: Maritime and Port Authority of Singapore

**Chart 4035** [previous update 2506/16] WGS84 DATUM

|        |                                     |                     |
|--------|-------------------------------------|---------------------|
| Insert | the accompanying block, centred on: | 1°16·5'N 103°46·9'E |
|--------|-------------------------------------|---------------------|

**6319 SINGAPORE - Angler Bank - Depths.**

Source: Maritime and Port Authority of Singapore

**Chart 4043** [previous update 6112/16] WGS84 DATUM

|        |   |                           |
|--------|---|---------------------------|
| Insert | depth, $\mathcal{S}$ , enclosed by 5m contour | (a) 1°20·67'N 104°02·99'E |
|--------|---|---------------------------|

|        |                                      |           |
|--------|--------------------------------------|-----------|
| Delete | depth, $\mathcal{S}_g$ , close S of: | (a) above |
|--------|--------------------------------------|-----------|

**Chart 4044** [previous update 6093/16] WGS84 DATUM


|        |   |                           |
|--------|---|---------------------------|
| Insert | depth, $\mathcal{S}$ , enclosed by 5m contour | (a) 1°20·67'N 104°02·99'E |
|--------|---|---------------------------|

|        |                                      |           |
|--------|--------------------------------------|-----------|
| Delete | depth, $\mathcal{S}_g$ , close S of: | (a) above |
|--------|--------------------------------------|-----------|

**6581 SINGAPORE - Tuas View SW - Submarine cable.**

Source: Maritime and Port Authority of Singapore

*Note:* Charts 4038, 4039 and 4040 are to be deleted from the list of charts affected by Notice 6251(P)/15**Chart 4038 (Panel C, Tuas Mega Yard)** [previous update 6018/16] WGS84 DATUM

|        |   |                                       |
|--------|---|---------------------------------------|
| Insert | submarine cable,  , joining: | 1°16·920'N 103°36·682'E<br>(N border) |
|        |   | 1°16·596'N 103°36·356'E               |
|        |   | 1°15·781'N 103°36·135'E               |
|        |   | 1°14·552'N 103°36·025'E               |

**V**  
**EXTRACT OF ADMIRALTY NOTICES TO MARINERS**  
**FOR DUAL-BADGED CHARTS**


**6581 SINGAPORE - Tuas View SW - Submarine cable. (continued)**

**Chart 4038** [previous update 6018/16] WGS84 DATUM

Insert submarine cable, , joining:

|  |                                     |
|--|-------------------------------------|
|  | 1°17·41'N 103°37·17'E<br>(shore)    |
|  | 1°16·60'N 103°36·36'E               |
|  | 1°15·78'N 103°36·14'E               |
|  | 1°11·05'N 103°35·71'E               |
|  | and                                 |
|  | 1°10·80'N 103°34·99'E<br>(S border) |
|  | 1°11·27'N 103°31·36'E               |
|  | 1°11·85'N 103°29·88'E               |
|  | 1°11·90'N 103°29·39'E               |
|  | 1°12·10'N 103°28·60'E<br>(W border) |

**Chart 4039** [previous update 4636/16] WGS84 DATUM


Insert submarine cable, , joining:

|  |                                     |
|--|-------------------------------------|
|  | 1°13·70'N 103°35·95'E<br>(N border) |
|  | 1°10·99'N 103°35·71'E               |
|  | 1°10·86'N 103°35·63'E               |
|  | 1°10·77'N 103°35·40'E               |
|  | 1°10·79'N 103°35·05'E               |
|  | 1°11·27'N 103°31·36'E               |
|  | 1°11·34'N 103°31·20'E<br>(W border) |

**V**  
**EXTRACT OF ADMIRALTY NOTICES TO MARINERS**  
**FOR DUAL-BADGED CHARTS**

**6581 SINGAPORE - Tuas View SW - Submarine cable. (continued)**

Chart 4040 [previous update 4636/16] WGS84 DATUM

|        |   |                       |
|--------|---|-----------------------|
| Insert | submarine cable,  , joining: | 1°17·41'N 103°37·17'E |
|        |   | (shore)               |
|        |   | 1°16·60'N 103°36·36'E |
|        |   | 1°15·78'N 103°36·14'E |
|        |   | 1°10·99'N 103°35·71'E |
|        |   | 1°10·86'N 103°35·63'E |
|        |   | 1°10·77'N 103°35·40'E |
|        |   | 1°10·79'N 103°35·05'E |
|        |   | 1°10·92'N 103°34·10'E |
|        |   | (W border)            |

**6603 SINGAPORE - Tuas Mega Yard - Light. Leading line. Legend.**

Source: Maritime and Port Authority of Singapore

Chart 4038 (Panel C, Tuas Mega Yard) [previous update 6581/16] WGS84 DATUM

|        |   |     |                         |
|--------|---|-----|-------------------------|
| Insert | ★ Iso.R&Q.R   | (a) | 1°16·494'N 103°36·587'E |
|        | leading line, pecked line for 150m then firm line for 390m,<br>extending in direction 020.7°, from: | (b) | (a) above               |
|        | legend, 200.7°, seaward end of:   |     | (b) above               |

**6646 SINGAPORE - West Jurong Channel - Dredged depth.**

Source: Maritime and Port Authority of Singapore

Chart 4033 [previous update 6091/16] WGS84 DATUM

|       |  |                         |
|-------|--|-------------------------|
| Amend | dredged depth to, <b>6.2m (2014)</b> , centred on: | 1°17·854'N 103°40·877'E |
|-------|--|-------------------------|

**V**  
**EXTRACT OF ADMIRALTY NOTICES TO MARINERS**  
**FOR DUAL-BADGED CHARTS**

**6564 MALAYSIA - Peninsular Malaysia, East Coast - Pelabuhan Johor (Johor Port) - Light-beacons. Jetties.**

Source: Malaysian Chart 6128

**Chart 4044 (Panel B, Pelabuhan Johor (Johor Port))** [previous update 6319/16] WGS84 DATUM

|        |  |     |                                       |
|--------|--|-----|---------------------------------------|
| Move   | ! FI.Y.4s6m6M, from:                     | (a) | 1°26·83'N 103°52·69'E                 |
|        |  | to: | (b) 1°26·79'N 103°52·71'E             |
|        | ! FI.Y.4s6m6M, from:                     | (c) | 1°26·67'N 103°52·83'E                 |
|        |  | to: | (d) 1°26·69'N 103°52·80'E             |
| Delete | former jetty, single firm line, joining: |     | (a)-(b) above<br>and<br>(c)-(d) above |

**Chart 4044** [previous update 6319/16] WGS84 DATUM

|        |  |     |                                       |
|--------|--|-----|---------------------------------------|
| Move   | ★ FI.Y.4s6M, from:                       | (a) | 1°26·83'N 103°52·69'E                 |
|        |  | to: | (b) 1°26·79'N 103°52·71'E             |
|        | ★ FI.Y.4s6M, from:                       | (c) | 1°26·67'N 103°52·83'E                 |
|        |  | to: | (d) 1°26·69'N 103°52·80'E             |
| Delete | former jetty, single firm line, joining: |     | (a)-(b) above<br>and<br>(c)-(d) above |

**6647(P) SINGAPORE - Port Approach Guide to Singapore - Dredged depth.**

Source: Maritime and Port Authority of Singapore

1.

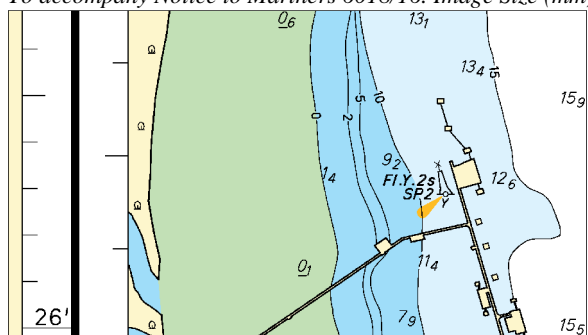
| Update | Feature                                     | Position              |
|--------|---|-----------------------|
| Amend  | dredged depth to, <b>6.2m</b> , centred on: | 1°17·84'N 103°40·87'E |

**Chart affected - 8175**


---

Updated to Admiralty Notices to Mariners No. 52 of 2016 dated 29<sup>th</sup> Dec 2016

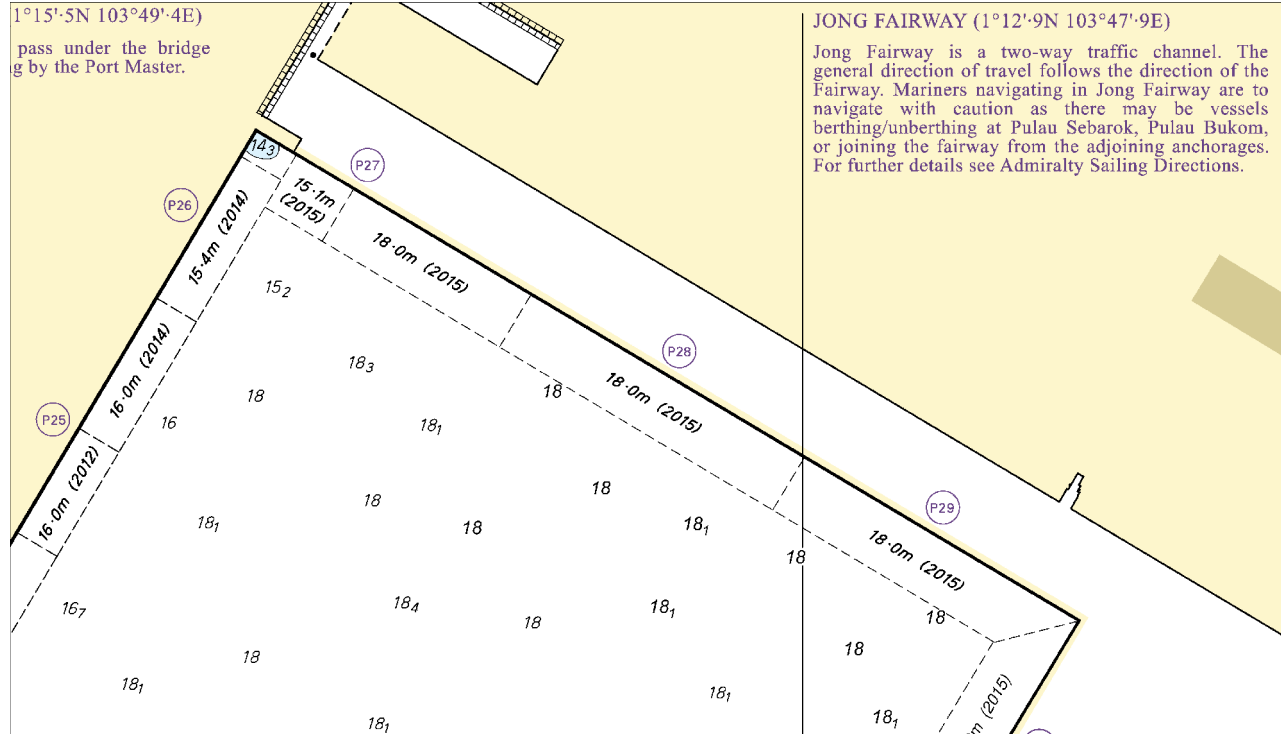
To accompany Notice to Mariners 6018/16. Image Size (mm) 43 by 76.5



Block for Chart No 4038

To accompany Notice to Mariners 6277/16. Image Size (mm) 96.8 by 169.6

1°15'5N 103°49'4E)  
pass under the bridge  
g by the Port Master.



JONG FAIRWAY (1°12'9N 103°47'9E)  
Jong Fairway is a two-way traffic channel. The general direction of travel follows the direction of the Fairway. Mariners navigating in Jong Fairway are to navigate with caution as there may be vessels berthing/unberthing at Pulau Sebarok, Pulau Bukom, or joining the fairway from the adjoining anchorages. For further details see Admiralty Sailing Directions.

Block for Chart No 4035

## SINGAPORE ENC DISTRIBUTORS

| ENC DISTRBUTOR   | ADDRESS   | TEL/FAX/EMAIL/WEBSITE   |
|--|---|---|
| C-MAP Norway AS  | Hovlandsveien 52, 4374, Egersund<br>Norway  | Tel: +47 51 46 4700<br>Fax: +47 51 46 4701<br>Email: enc@c-map.com<br>Website: http://www.c-map.com                       |
| Chartworld GmbH  | Atlantic Haus, Zirkusweg 1<br>D-20359 Hamburg, Germany                                | Tel: +49 40 853 58 6942<br>Fax: +49 40 853 58 6949<br>Email: sales@chartworld.com   |
| Chartworld Asia<br>Pacific Pte Ltd                                   | Frontech Centre 07-01<br>15 Jalan Kilang Barat<br>Singapore 159357                    | Tel: +65 6513 3500<br>Website: http://www.chartworld.com<br>http://www.ecdis-as-a-service.com                             |
| Global Navigation<br>Solutions Ltd                                   | 2 Boon Leat Terrace #05-02/03/04,<br>Harbourside Building 2<br>Singapore 119844       | Tel: +65 62704060<br>Fax: +65 62763858<br>Email: sg.info@gnsworldwide.com<br>Website: www.gnsworldwide.com                |
| Japan Hydrographic<br>Association<br>(Electronic Charts<br>Division) | Daiichi Sogo Bldg, 6F 1-6-6,<br>Hanedakuko, Ota-ku Tokyo 144-0041<br>Japan            | Tel: +81 3 5708 7093<br>Fax: +81 3 5708 7094<br>Email: shimizu-6kj@jha.jp<br>Website: http://www.jha.or.jp/en/jha/        |
| Maritime Information<br>Systems (MARIS)                              | 52, Telok Blangah Road #01-06<br>Telok Blangah House<br>Singapore 058809              | Tel: +65 6276 1472<br>Fax: +65 6276 1473<br>Email: support@maris.sg<br>Website: http://www.maris.no                       |
| Maritime Information<br>System AS (MARIS)                            | Danholmen 25, 3128 Notteroy<br>Norway   | Tel: +47 33 30 42 50<br>Fax: +47 33 30 42 51<br>Email: sales@maris.no<br>Website: http://www.maris.no                     |
| Motion Smith   | 15 Jalan Kilang Barat<br>#08-01/05 Frontech Centre<br>Singapore 159357                | Tel: +65 6220 5098<br>Fax: +65 6225 4902<br>Email: sales@motsmith.com<br>Website: http://www.motsmith.com                 |
| PRIMAR STAVANGER   | Lervigsveien 36, P.O Box 60<br>N-4001 Stavanger, Norway                               | Tel: +47 51 93 9500<br>Fax: +47 51 93 9501<br>Email: sales@ecc.no<br>Website: http://www.primar.no                        |
| Transas Marine Pacific<br>Pte Ltd                                    | Cyber Centre<br>16/18 Jalan Kilang Barat<br>Off Jalan Bukit Merah<br>Singapore 159358 | Tel: +65 6271 0200<br>Fax: +65 62717300<br>Email: navigation.asia@transas.com<br>Website: http://www.transas.com          |
| The United Kingdom<br>Hydrographic Office                            | Admiralty Way, Taunton<br>Somerset, TA1 2DN<br>United Kingdom                         | Tel: +44 1823 33 7900<br>Fax: +44 1823 28 4077<br>Email: ENCS.SalesReports@ukho.gov.uk<br>Website: http://www.ukho.gov.uk |

**Chart Distributors for the Maritime and Port Authority of Singaporean  
Charts and Publications**

Please approach any of the Chart Distributors to purchase the Singaporean Charts and Publications

| <b>CHART<br/>DISTRIBUTORS</b>               | <b>ADDRESS</b>   | <b>TEL/FAX/EMAIL/WEBSITE</b>   |
|---|--|--|
| Chartco (Singapore)<br>Pte Ltd              | 896 Dunearn Road<br>#03-05 Sime Darby Centre<br>Singapore 589472                   | Tel: +65 6545 9880 Ext 65285<br>Fax: +65 6545 8892<br>Email: leslie.khoo@chartco.com<br>Website: <a href="http://www.chartco.com">http://www.chartco.com</a>   |
| Cornes (Singapore)<br>Pte Ltd               | 10 Anson Road<br>#23-06/6A International Plaza<br>Singapore 079903                 | Tel: +65 6223 8320<br>Fax: +65 6223 8321<br>Email: sales9850@cspl.sg<br>Website: <a href="http://www.cornes-charts.com">http://www.cornes-charts.com</a>   |
| E.W. Liner Charts &<br>Publications Pte Ltd | 100, Pasir Panjang Road<br>#05-10<br>Singapore 118518                              | Tel: +65 6323 0773<br>Fax: +65 6323 0775<br>Email: sales@ewliner.com<br>Website: <a href="http://www.ewliner.com">http://www.ewliner.com</a>   |
| Global Navigation<br>Solutions Ltd          | 2 Boon Leat Terrace<br>#05-02/03/04, Harbourside<br>Building 2<br>Singapore 119844 | Tel: +65 6270 4060<br>(After office hours: +65 9632 5268)<br>Fax: +65 6276 3858<br>Email: sg.info@gnsworldwide.com<br>Website: <a href="http://www.gnsworldwide.com">http://www.gnsworldwide.com</a> |
| Motion Smith                                | 15 Jalan Kilang Barat<br>#08-01/05 Frontech Centre<br>Singapore 159357             | Tel: +65 6220 5098<br>(After office hours: +65 8163 9993)<br>Fax: +65 225 4902<br>Email: sales@motsmith.com<br>Website: <a href="http://www.motsmith.com">http://www.motsmith.com</a>                |



## HYDROGRAPHIC NOTE - Instructions

1. Mariners are requested to notify the Chief Hydrographer, Maritime and Port Authority of Singapore, when new or suspected dangers to navigation are discovered, changes are observed in aids to navigation or where corrections to nautical publications may be necessary. Reports, which cannot be confirmed or are lacking in certain details should not be withheld.
2. Any ambiguities of time, positioning and depth should be stressed and any firm expectation of being able to check the information provided on a following voyage should be mentioned.
3. Mariners using satellite position fixing systems, eg. GPS, should provide details of equipment and datum used (where applicable). Where bearings (true or magnetic) are taken visually or by radar to fix a position, it should include more than two objects in order to provide a check on its accuracy. A position may also be defined by bearing and distance from a conspicuous object eg. beacon, lighthouse etc.
4. The note should include a tracing or a digital image of the chart used and the details should be clearly marked.
5. Echo sounders frequently register greater depths than the advertised maximum depth for the equipment, eg. a trace appearing at 50 metres may be in fact be 550 metres or even 1050 metres for equipment whose maximum depth is 500 metres. Erroneous depths caused by 2nd transmission error can usually be recognised by the following:
  - (a) the tracing being weaker than normal for the depth registered,
  - (b) the trace appearing to pass through the transmission line,
  - (c) the feathery nature of the trace.
6. Upon receipt of a hydrographic note, a Notice to Mariners may be issued. The sender's vessel or name is quoted as the source unless the same information is also received in foreign Notices to Mariners.
7. Reports of shoals, uncharted dangers and defects in aids to navigation may also be made to the appropriate Singapore Port Operations Control Centre on VHF Channels 10, 12, 14, 68 or 73.

**HYDROGRAPHIC NOTE**

To:

Chief Hydrographer  
Maritime and Port Authority of Singapore  
7B Keppel Road #20-00 Tanjong Pagar Complex  
Singapore 089055

Tel : (65) 6325 2027  
Fax : (65) 6226 1076  
Email : [hydrographic@mpa.gov.sg](mailto:hydrographic@mpa.gov.sg)

**Sender's Contact Details** :

Date : .....  
Name of Vessel : .....  
Address of Sender : .....  
Tel : ..... Fax : .....  
Email : .....

**Nature of Observation** :

General Location : .....  
Subject : .....  
Position : Lat. .... Long. ....  
Charts Used : .....  
Date & Time of Observation : .....  
Details : .....  
Attachment : .....

**Equipment Used** :

Type of Position Fixing : ..... GPS / DGPS ..... Others : .....  
Type of Echo Sounder : .....  
Name and Signature : .....

Ship's/Company's Stamp : .....