



SINGAPOREAN NOTICES TO MARINERS

SECTION	CONTENT	Page
I	Index of Charts & Publications	1
II	New Publications	9
	Notices to Mariners and Chart Corrections	11
	Temporary and Preliminary Notices	13
III	Navigational Information	14
	Amendments to Publications	15
IV	Reprint of Radio Navigational Warnings	19
V	Extract of Admiralty Notices to Mariners for Dual-Badged Charts	20

The monthly Notices to Mariners contain corrective information affecting charts published by the Hydrographic Department, Maritime and Port Authority of Singapore. The information contained in these Notices should be updated on the charts affected. Notices under Section II apply only to the particular Singaporean Chart(s) indicated.

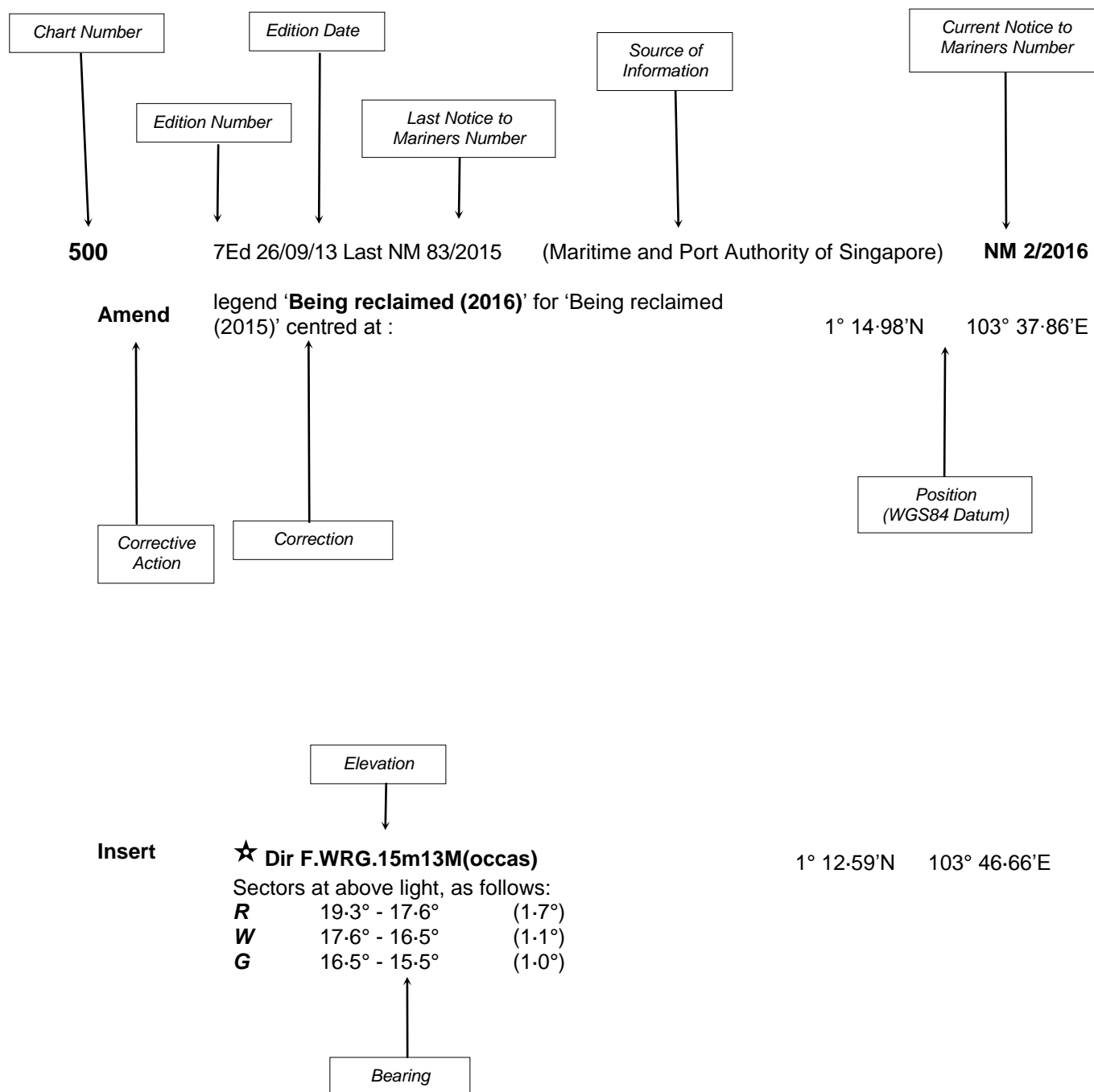
Mariners are requested to notify the Chief Hydrographer, Maritime and Port Authority of Singapore, immediately on the discovery of new dangers or suspected dangers to navigation and of changes or defects in aids to navigation. See Hydrographic Note on back page.

The monthly Singaporean Notices to Mariners can be accessed directly from the MPA website:
<http://www.mpa.gov.sg/web/portal/home/port-of-singapore/circulars-and-notices/singapore-notices-to-mariners-ntm>

Hydrographic Department
Maritime and Port Authority of Singapore
7B Keppel Road
#20-00 Tanjong Pagar Complex
Singapore 089055
Tel: (65) 6325 2027
Fax: (65) 6226 1076
Email: hydrographic@mpa.gov.sg

EXPLANATION OF FORMAT

The elements of a typical chart correction are explained below.



Notes:

- Notice to Mariners number followed by:
T indicates a Temporary Notice (eg. **NM 3T/2016**).
P indicates a Preliminary Notice (eg. **NM 4P/2016**).
- Bearings are true reckoned clockwise from 000° to 359° ; those relating to lights are from seaward.
- Heights and elevations are above Mean High Water Springs.

I
INDEX OF CHARTS AND PUBLICATIONS

INDEX OF AFFECTED CHARTS

DESCRIPTION	NOTICE NO.	PAGE NO.
Index of Singaporean Charts	-	3, 4
Index of Dual-Badged Charts	-	5 to 7
Index of Singapore Electronic Navigational Chart (ENC)	-	8
New Edition Dual Badged Chart	-	9
New Edition Singapore ENC	-	10
Singaporean Chart GSP1/SP1	*22, 23, *24, *25	11
Singaporean Chart 501	23, *24	11
Singaporean Chart 502	23, *24, *25, *26	12
Temporary and Preliminary Notices	-	13
Singapore Port Marine Notices/Circulars	*27	14
Singaporean Print-On-Demand (POD) Charts	*28	14
Amendments to Publications	*29	15 to 18
Reprint of Radio Navigational Warnings	-	19
Extract of Admiralty Notices to Mariners for Dual-Badged Charts	-	20
Singapore Electronic Navigational Chart (ENC) Distributors	-	21
Chart Distributors for the Maritime and Port Authority of Singapore Nautical Charts and Publications	-	22

*Source: Maritime and Port Authority of Singapore

I
INDEX OF CHARTS AND PUBLICATIONS

INDEX OF NOTICES

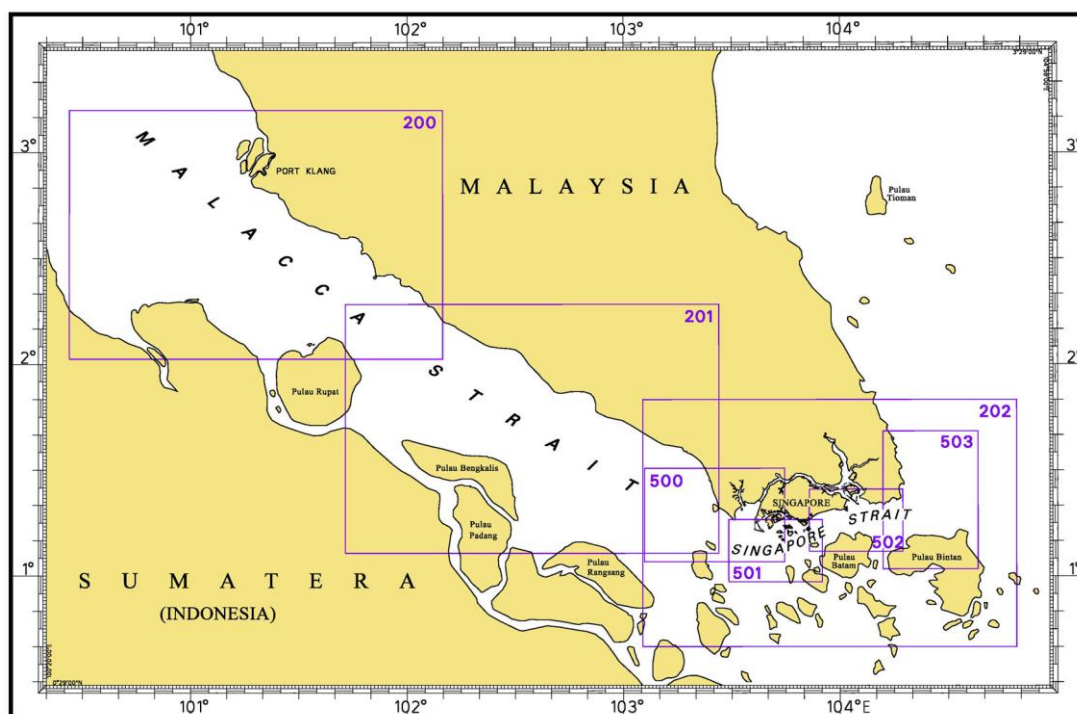
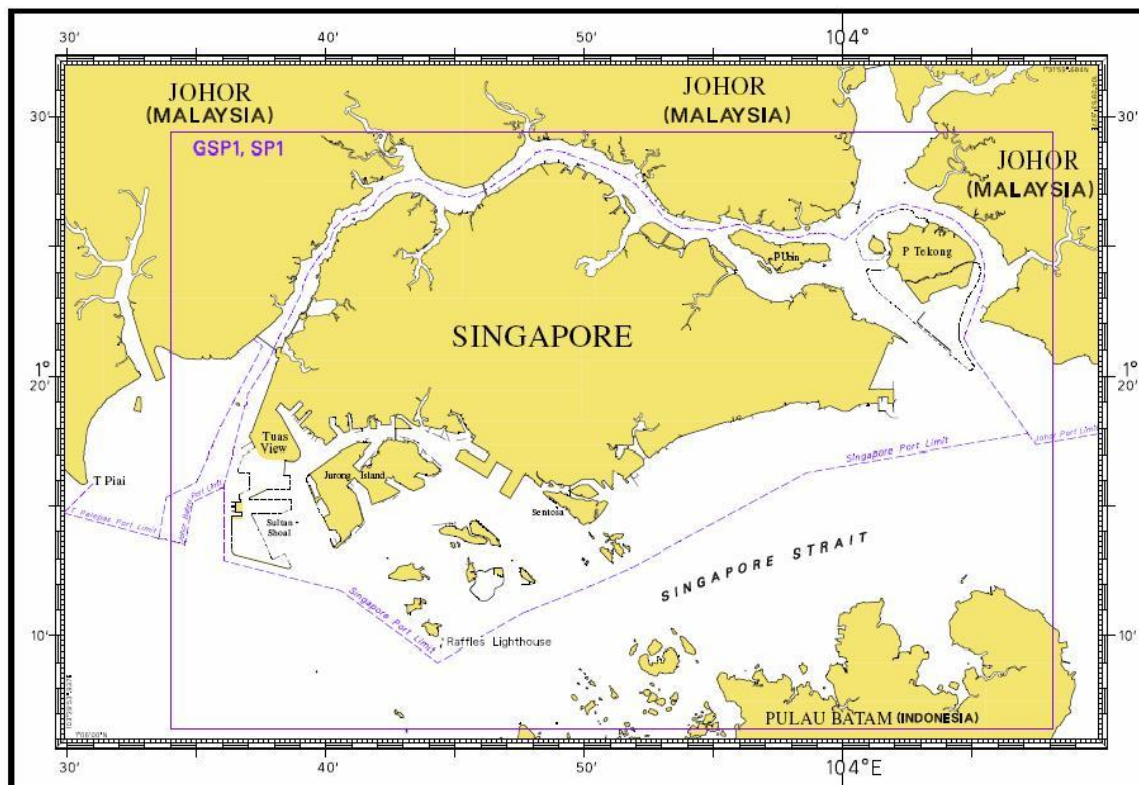
NOTICE NO.	DESCRIPTION	PAGE NO.
-	Index of Singaporean Charts	3, 4
-	Index of Dual-Badged Charts	5 to 7
-	Index of Singapore Electronic Navigational Chart (ENC)	8
-	New Edition Dual Badged Chart	9
-	New Edition Singapore ENC	10
*22,23,*24,*25	Singaporean Chart GSP1/SP1	11
23, *24	Singaporean Chart 501	11
23, *24, *25, *26	Singaporean Chart 502	12
-	Temporary and Preliminary Notices	13
*27	Singapore Port Marine Notices/Circulars	14
*28	Singaporean Print-On-Demand (POD) Charts	14
*29	Amendments to Publications	15 to 18
-	Reprint of Radio Navigational Warnings	19
-	Extract of Admiralty Notices to Mariners for Dual-Badged Charts	20
-	Singapore Electronic Navigational Chart (ENC) Distributors	21
-	Chart Distributors for the Maritime and Port Authority of Singapore Nautical Charts	22

* Source: Maritime and Port Authority of Singapore

I

INDEX OF CHARTS AND PUBLICATIONS

INDEX OF SINGAPOREAN CHARTS



Notes:

Updated Singaporean Charts are available through our Print-On-Demand (POD) Chart Service. For more information, refer to Section III – Navigational Information. These charts can be purchased from our Chart Distributors.

I
INDEX OF CHARTS AND PUBLICATIONS

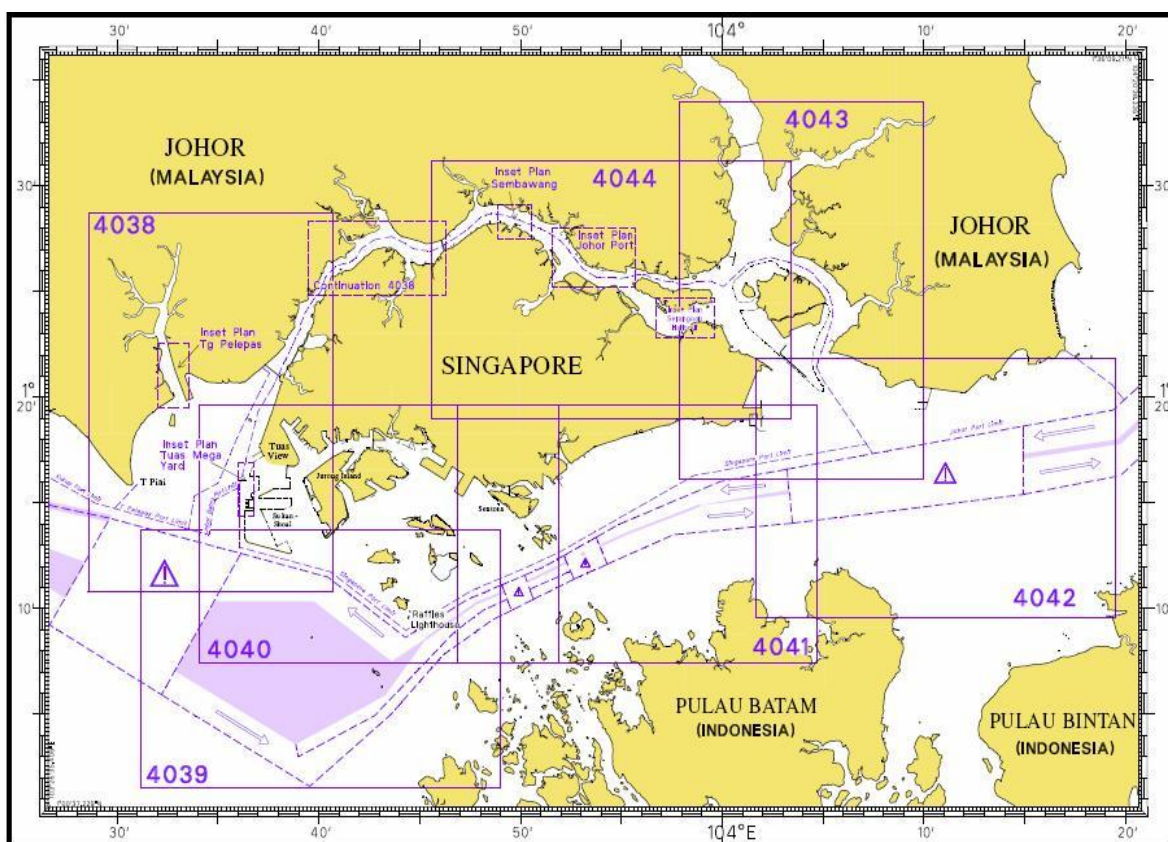
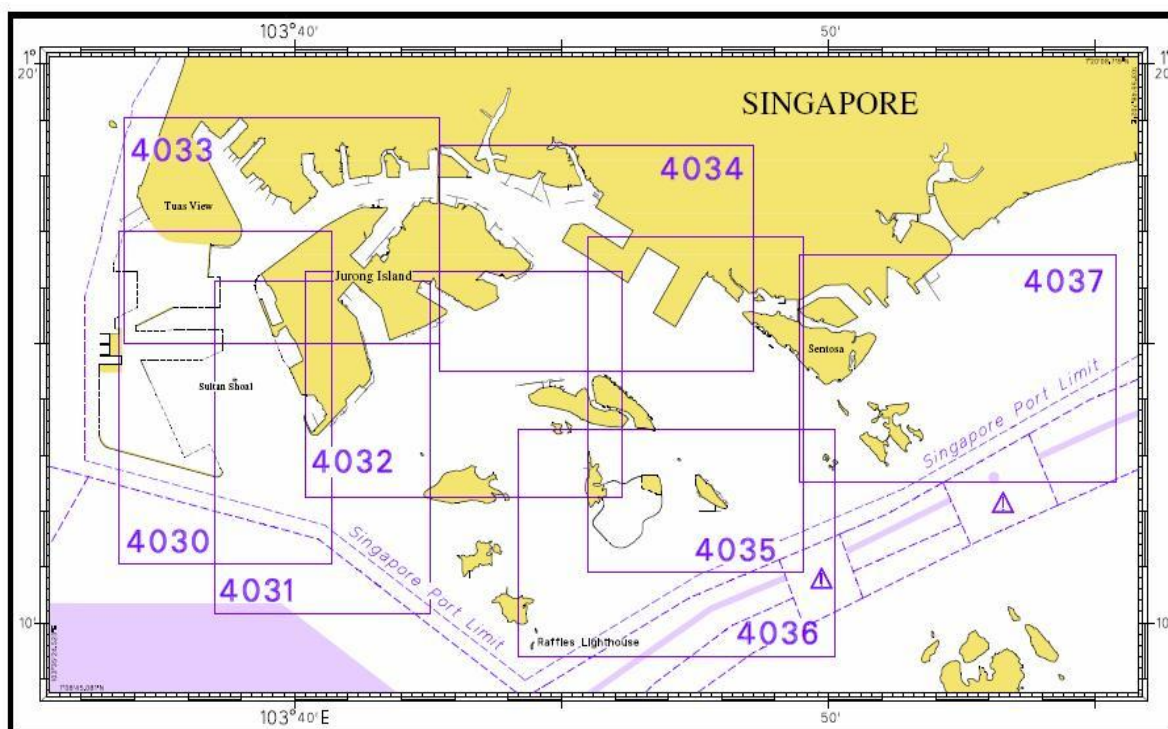
SINGAPOREAN CHARTS

Chart No.	Chart Title	Scale 1:	Date Published of Latest Edition
GSP1	Anchorage and Aids to Navigation (with Area Reference)	65 000	15/02/2016
SP1	Anchorage and Aids to Navigation	65 000	15/02/2016
200	Malacca Strait - Port Klang to Tanjung Keling	200 000	01/09/2015
201	Malacca Strait - Tanjung Keling to Western Entrance of Singapore Strait	200 000	15/08/2014
202	Singapore Strait	200 000	26/09/2013
500	Malacca and Singapore Straits – Pulau Pisang to Raffles Lighthouse	75 000	26/09/2013
501	Singapore Strait – Western Part	50 000	01/09/2015
502	Singapore Strait - Eastern Part	50 000	01/09/2015
503	South China Sea - Eastern Approaches and Entrance to Singapore Strait	75 000	15/08/2014
-	Charts for Small Craft – Singapore Port Waters and Approaches	10 000 to 200 000	January 2016
1	<p>Symbols Abbreviations Terms and S-57 Objects used on Singapore Nautical and Electronic Navigational Charts.</p> <p>Available at MPA website: http://www.mpa.gov.sg/web/portal/home/publications/charts-symbols-and-abbreviations </p>	-	28/07/2011

I

INDEX OF CHARTS AND PUBLICATIONS

DUAL-BADGED CHARTS



I
INDEX OF CHARTS AND PUBLICATIONS

Chart No.	Chart Title	Scale 1:	Date Published of Latest Edition
4030	Port of Singapore West Jurong Anchorages and Temasek Fairway	10 000	17/03/2016
4031	Port of Singapore Western Approaches to Jurong Island	10 000	17/03/2016
4032	Port of Singapore Sinki Fairway	10 000	15/05/2014
4033	Port of Singapore Tuas Bay, West Jurong Channel and Pesek Basin	10 000	17/03/2016
4034	Port of Singapore East Jurong Channel, Pasir Panjang Terminal and West Keppel Fairway	10 000	28/05/2015
4035	Port of Singapore Western Anchorages, Jong Fairway and Cruise Bay	10 000	28/05/2015
4036	Port of Singapore Raffles Lighthouse to The Sisters	10 000	28/05/2015
4037	Port of Singapore Keppel Harbour, Tanjong Pagar Terminal and Approaches	10 000	28/05/2015
4038	Malaysia and Singapore Johor Strait – Western Part	30 000	25/02/2016
4039	Indonesia, Singapore and Malaysia Western Approaches to Main Strait	30 000	24/04/2014
4040	Singapore, Indonesia and Malaysia Tuas View to Pulau Sakijang Bendera (S. John's Island)	30 000	27/08/2015
4041	Singapore and Indonesia Pulau Sebarok to Changi	30 000	27/08/2015

I

INDEX OF CHARTS AND PUBLICATIONS**DUAL- BADGED CHARTS**

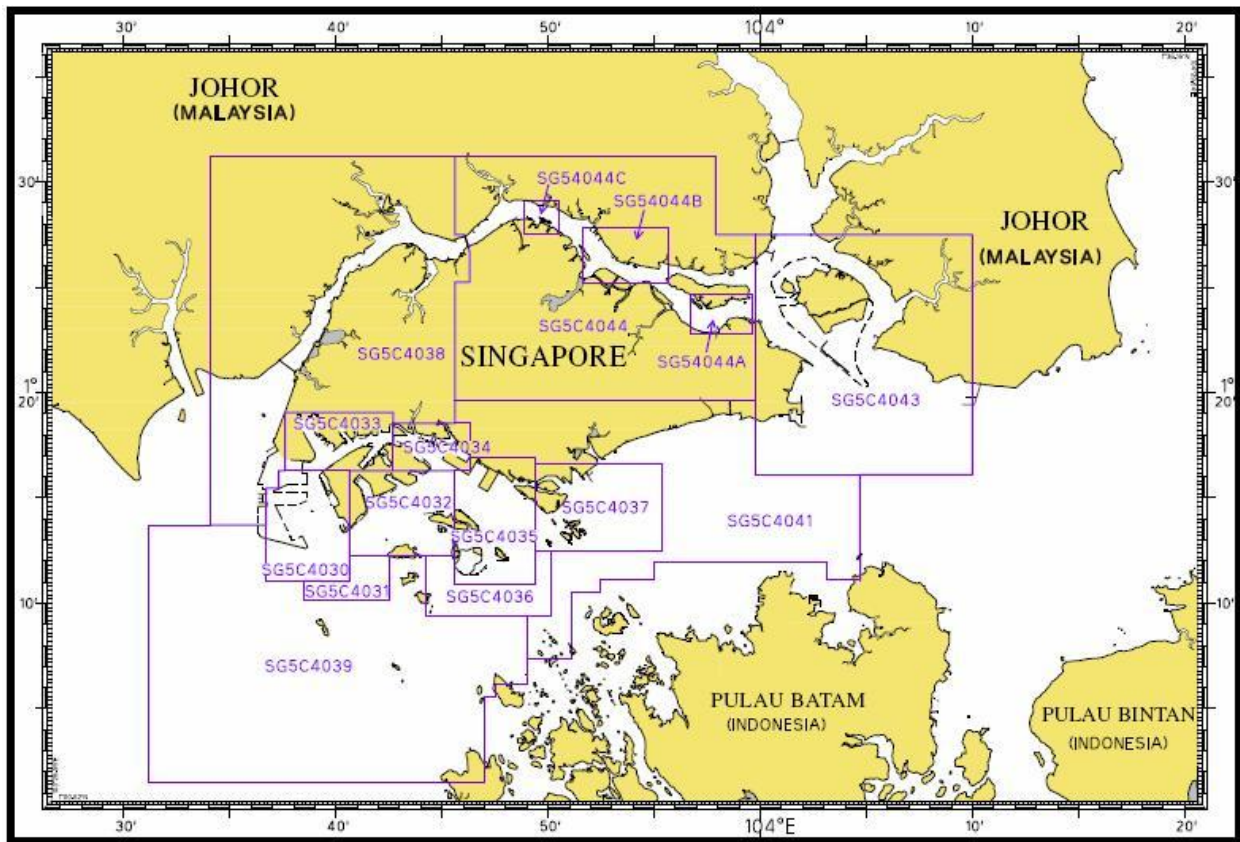
Chart No.	Chart Title	Scale 1:	Date Published of Latest Edition
4042	Indonesia, Malaysia and Singapore Changi to Pulau Mungging and Tanjung Buntan to Tanjung Tondang	30 000	24/04/2014
4043	Malaysia and Singapore Kuala Johor and Sungai Johor	30 000	09/04/2015
4044	Singapore and Malaysia Johor Strait - Eastern Part	30 000	09/04/2015

SINGAPOREAN PUBLICATIONS

Item	Title	Date Published of Latest Edition
1	Singapore Tide Tables Year 2016	09/09/2015
2	Singapore Port Information 2016/2017	04/01/2016

INDEX OF CHARTS AND PUBLICATIONS

INDEX OF SINGAPORE ELECTRONIC NAVIGATIONAL CHART (ENC)



SINGAPORE ELECTRONIC NAVIGATIONAL CHART (ENC)

ENC Name	ENC Coverage	ENC Edition
SG5C4030	West Jurong Anchorages and Temasek Fairway	9 th Edition (17/03/2016)
SG5C4031	Western Approaches to Jurong Island	8 th Edition (17/03/2016)
SG5C4032	Sinki Fairway	10 th Edition (7/05/2015)
SG5C4033	Tuas Bay, West Jurong Channel and Pesek Basin	9 th Edition (17/03/2016)
SG5C4034	East Jurong Channel, Pasir Panjang Terminal and West Keppel Fairway	13 th Edition (28/05/2015)
SG5C4035	Western Anchorages, Jong Fairway and Cruise Bay	16 th Edition (28/05/2015)
SG5C4036	Raffles Lighthouse to The Sisters	9 th Edition (28/05/2015)
SG5C4037	Keppel Harbour, Tanjong Pagar Terminal and Approaches	9 th Edition (28/05/2015)
SG5C4038	Johor Strait – Western Part	9 th Edition (25/02/2016)
SG5C4039	Western Approaches to Main Strait	8 th Edition (27/08/2015)
SG5C4041	Pulau Sebarok to Changi	9 th Edition (27/08/2015)
SG5C4043	Kuala Johor	11 th Edition (9/04/2015)
SG5C4044	Johor Strait – Eastern Part	11 th Edition (9/04/2015)
SG54044A	Serangoon Harbour	2 nd Edition (9/04/2015)
SG54044B	Pelabuhan Johor (Johor Port)	2 nd Edition (9/04/2015)
SG54044C	Sembawang	2 nd Edition (9/04/2015)

The latest edition of the Singapore ENC covering Singapore Waters and their approaches can be found in our monthly Singaporean Notices to Mariners at MPA website: <http://www.mpa.gov.sg/web/portal/home/port-of-singapore/port-operations/charts-tidal-information-aids-to-navigation-hydrography/nautical-charts/singapore-electronic-navigational-chart-enc>

II NEW PUBLICATIONS

NEW EDITION DUAL BADGED CHART PUBLISHED ON 17TH MARCH 2016

Chart Number	:	4030
Title	:	Port of Singapore West Jurong Anchorages and Temasek Fairway
Coverage	:	Lat 01° 11-05' N 01° 17-00' N Long 103° 36-70' E 103° 40-70' E
Scale	:	1 : 10 000
Date Published	:	17 th March 2016
Size of Chart	:	742.0 x 1096.5 mm
Remarks	:	This new edition includes updates covering Temasek Fairway, West Jurong Channel, Jurong Anchorages, west of Jurong Island and Sudong Anchorages.

The existing chart of the same number published on 07th May 2015 is superseded.

Chart Number	:	4031
Title	:	Port of Singapore
		Western Approaches to Jurong Island
Coverage	:	Lat 01° 10·15' N 01° 16·12' N
		Long 103° 38·50' E 103° 42·53' E
Scale	:	1 : 10 000
Date Published	:	17 th March 2016
Size of Chart	:	747·5 x 1100·2 mm
Remarks	:	This new edition includes updates covering Temasek Fairway, west of Jurong Island, Banyan Basin and Sudong Anchorages.

The existing chart of the same number published on 07th May 2015 is superseded.

Chart Number	:	4033
Title	:	Port of Singapore
		Tuas Bay, West Jurong Channel and Pesek Basin
Coverage	:	Lat 01° 15-00' N 01° 19-05' N
		Long 103° 36-80' E 103° 42-70' E
Scale	:	1 : 10 000
Date Published	:	17 th March 2016
Size of Chart	:	1094.4mm x 746.4mm
Remarks	:	This new edition includes updates covering Temasek Fairway, West Jurong Channel, Tuas Approach Channel, Northern Tuas Basin and Pesek Basin.

The existing chart of the same number published on 07th May 2015 is superseded.

II NEW PUBLICATIONS

NEW EDITION SINGAPORE ENC RELEASED ON 17TH MARCH 2016

ENC Name : SG5C4030
Location : West Jurong Anchorages and Temasek Fairway
Coverage : Lat 01° 11-050' N 01° 16-300' N
 Long 103° 36-700' E 103° 40-640' E
Compilation Scale : 1: 8 000
Date Released : 17th March 2016
Descriptions : This new edition includes updates covering Temasek Fairway, West Jurong Channel, Jurong Anchorages, west of Jurong Island and Sudong Anchorages.

The existing cell of the same name released on 07th May 2015 is superseded.








ENC Name : SG5C4031
Location : Western Approaches to Jurong Island
Coverage : Lat 01° 10-150' N 01° 12-250' N
 Long 103° 38-500' E 103° 42-530' E
Compilation Scale : 1: 8 000
Date Released : 17th March 2016
Descriptions : This new edition includes updates covering Sudong Anchorages.

The existing cell of the same name released on 01st September 2014 is superseded.






ENC Name : SG5C4033
Location : Tuas Bay, West Jurong Channel and Pesek Basin
Coverage : Lat 01° 16-300' N 01° 19-050' N
 Long 103° 38-000' E 103° 42-700' E
Compilation Scale : 1: 8 000
Date Released : 17th March 2016
Descriptions : This new edition includes updates covering Tuas Bay, West Jurong Channel and Pesek Basin.

The existing cell of the same name released on 07th May 2015 is superseded.

II NOTICES TO MARINERS AND CHART CORRECTIONS

GSP1/SP1	1Ed 15/02/16	(Maritime and Port Authority of Singapore)	*NM 22/2016
Insert	 Wk		1°13.72'N 103°48.63'E
	#		1°15.06'N 103°48.68'E
		(Directorate General of Sea Transport Indonesia)	NM 23/2016
Move		from	1°12.81'N 103°54.90'E
		to	1°12.87'N 103°54.96'E
		(Maritime and Port Authority of Singapore)	*NM 24/2016
Replace	 with 		1°15.02'N 103°51.81'E
		(Maritime and Port Authority of Singapore)	*NM 25/2016
Amend	name to, Tekong 3	1°23.35'N	104°01.06'E
	Tekong 5	1°24.22'N	104°00.76'E
	Tekong 6	1°24.58'N	104°00.63'E
	Tekong 18	1°26.27'N	104°01.34'E
	Tekong 19	1°26.54'N	104°02.35'E
	Tekong 20	1°26.26'N	104°03.48'E
<hr/>			
501	7Ed 01/09/15 Last NM 10/2016	(Directorate General of Sea Transport Indonesia)	NM 23/2016
Move		from	1°12.81'N 103°54.90'E
		to	1°12.87'N 103°54.96'E
		(Maritime and Port Authority of Singapore)	*NM 24/2016
Replace	 with 		1°15.02'N 103°51.81'E

II NOTICES TO MARINERS AND CHART CORRECTIONS

502	7Ed 01/09/15 Last NM 10/2016	(Directorate General of Sea Transport Indonesia)	NM 23/2016
Move		from	1°12-81'N 103°54-90'E
		to	1°12-87'N 103°54-96'E
		(Maritime and Port Authority of Singapore)	*NM 24/2016
Replace	 with 		1°15-02'N 103°51-81'E
		(Maritime and Port Authority of Singapore)	*NM 25/2016
Amend	name to, <i>Tekong 9</i>	1°21-07'N	104°03-73'E
	<i>Tekong 10</i>	1°21-08'N	104°04-78'E
	<i>Tekong 21</i>	1°20-60'N	104°04-29'E
		(Maritime and Port Authority of Singapore)	*NM 26/2016
Replace	 <i>Wk</i> with  <i>Wk</i>		1°17-76'N 104°03-60'E

II
TEMPORARY AND PRELIMINARY NOTICES

NIL

III NAVIGATIONAL INFORMATION

*(NM 27/2016) SINGAPORE PORT MARINE NOTICES/CIRCULARS

The Port Marine Notices/Circulars shortlisted below would be of particular interest to mariners. Details and complete list of Port Marine Notices/Circulars are available at this link: <http://www.mpa.gov.sg/web/portal/home/port-of-singapore/circulars-and-notices>

PMN No.	Subject
17/2016	Seawall opening works off Ayer Merbau Basin and Selat Pandan
23/2016	Upgrading works at Jurong Terminal Berth J10

PMC No.	Subject
4/2016	Implementation of technical reference for bunker mass flow metering (TR 48:2015)
5/2016	Garbage collection services for ships in Singapore

*(NM 28/2016) SINGAPOREAN PRINT-ON-DEMAND (POD) CHARTS

Print-On-Demand (POD) Charts are the most up-to-date paper nautical charts printed for navigational use. These nautical charts are produced in accordance with the International Hydrographic Organisation (IHO) chart specifications. All Singaporean Charts are continually updated to the latest Notices to Mariners before they are printed and sold to users.

These POD Charts include GSP1, SP1, 200, 201, 202, 500, 501, 502 and 503.

BENEFITS TO OUR CUSTOMERS

Convenience

Customers need not make numerous hand corrections to the nautical charts before use. In addition the updated POD Charts are more accurate and reliable than offset printed charts with hand corrections.

Clarity

Clarity in the presentation of updated information as compared to non-POD printed charts, where in some cases there are several overlapping corrections over existing information.

Coverage

The POD Charts cover the Straits of Malacca and Singapore, from One Fathom Bank to Horsburgh Lighthouse.

*Source: Maritime and Port Authority of Singapore

III AMENDMENTS TO PUBLICATIONS

*(NM 29/2016) UPDATING OF PUBLICATION “SINGAPORE PORT INFORMATION 2016/2017”

1. Page 104

LEAST DEPTHS OF ANCHORAGES

Amend the following:

No	Anchorage	Depth (m)	Latitude (N) Longitude (E)
3	Man-of-War (AMOW)	14.0	1°18.558' 104°04.422'
4	Eastern Bunkering A (AEBA)	17.5	1°18.346' 104°03.496'
13	Eastern Petroleum A (AEPA)	21.7	1°15.557' 103°54.079'
15	Eastern Holding B (AEHB)	21.1	1°14.578' 103°52.783'

2. Page 157

PULAU TEKONG

Amend the following:

Name Of Beacon/ Buoy	Position Lat. N Long. E Deg Min	Structure, Colour & Shape	Light Characteristic	Owner
Calder Buoy	01°23.044' 104°05.159'	Red Can	Fl.R.8s	Santarli
Malang Tiga Buoy	01°23.044' 104°01.417'	Green Conical	Fl.G.2.5s	HDEC
Nelayan Buoy	01°21.853' 104°02.817'	Green Conical	Fl.G.4s	Santarli
North Tekong Buoy	01°26.021' 104°01.033'	Double black cones topmark point upward on black yellow pillar	QFl.W	HDEC

III AMENDMENTS TO PUBLICATIONS

3. Page 158

PULAU TEKONG (Cont/)

Amend the following:

Name Of Beacon/ Buoy	Position Lat. N Long. E Deg Min	Structure, Colour & Shape	Light Characteristic	Owner
Red Calder Buoy	01°21.750' 104°04.690'	Red Can	Fl.R.4s	Santarli
South Nelayan Buoy	01°20.090' 104°05.009'	Double black cones topmark pointing downward on yellow black pillar	Q(6)W+LFIW.15s	Santarli
Tekong Buoy	01°25.406' 104°00.442'	Green Conical	Fl(3)G.15s	HDEC
Tekong 1	01°22.591' 104°01.949'	Green Conical	Fl.G.4s	Santarli
Tekong 3	01°23.350' 104°01.057'	Green Conical	Fl.G.2s	HDEC
Tekong 5	01°24.218' 104°00.759'	Green Conical	Fl.G.4s	HDEC
Tekong 6	01°24.583' 104°00.634'	Green Conical	Fl(2)G.10s	HDEC
Tekong 9	01°21.074' 104°03.734'	Green Conical	Fl.G.4s	Santarli
Tekong 10	01°21.079' 104°04.776'	Red Can	Fl.R.2s	Santarli
Tekong 11	01°22.267' 104°04.876'	Red Can	Fl.R.6s	Santarli
Tekong 18	01°26.271' 104°01.343'	Yellow Pillar	Fl.Y.4s	HDEC
Tekong 19	01°26.544' 104°02.353'	Double black cones point upward on yellow pillar	Fl.Y.4s	HDEC
Tekong 20	01°26.260' 104°03.478'	Yellow Pillar	Fl.Y.2s	HDEC
Tekong 21	01°20.600' 104°04.290'	Green Conical	Fl.G.2s	Santarli
Tekong 22	01°23.661' 104°05.391'	Red Can	Fl.R.10s	Santarli
Tekong 23	01°24.376' 104°05.375'	Red Can	Fl.R.2s	Santarli
West Tekong Buoy	01°25.167' 104°00.434'	Double black cones point to point on yellow with black horizontal band pillar	Q(9)W.15s	HDEC

III AMENDMENTS TO PUBLICATIONS

3. Page 165

16 JURONG ISLAND - BANYAN BASIN (UNIVERSAL TERMINAL (S) PTE LTD) (1°14·5'N, 103°41·5'E)

Amend the following:

UTS Berths	Length of Berth Box	
	Delete	Insert
OMU 6	122m	128m

4. Page 172

39 WOODLANDS (SHELL EASTERN PETROLEUM PTE LTD) (1°27·2'N, 103°46·5'E)

Amend the following:

Berth	Depth Alongside (Year Surveyed)	
	Delete	Insert
Woodlands Oil Pier	7.7m (2007)	7.3m (2015)

5. Page 179

45 PASIR PANJANG TERMINAL (PSA SINGAPORE TERMINALS) (1°17·2'N, 103°46·1'E)

Amend the following:

Berth	Length of Berth Box	Depth Alongside (Year Surveyed)	Controlling Depth In Approaches
P36	453m	*18.0m	18.0m
P37	312.5m	*18.0m	18.0m

Insert the following:

Berth	Length of Berth Box	Depth Alongside (Year Surveyed)	Controlling Depth In Approaches
P28	420m	18.0m (2015)	-
P29	420m	18.0m (2015)	-
P38	360m	*18.0m	18.0m
P39	360m	18.0m (2015)	18.0m
P40	360m	18.0m (2015)	18.0m
P41	360m	18.0m (2015)	18.0m

III AMENDMENTS TO PUBLICATIONS

6. Page 182

46 SINGAPORE CRUISE CENTRE (SINGAPORE CRUISE CENTRE PTE LTD)**46.1 International Passenger Terminal (IPT) - 1°15·7'N, 103°49·1'E**

Amend the following:

Berth	Controlling Depth In Approaches	
	Delete	Insert
CC1	10.9m	9.8m
CC2	10.8m	9.7m

Insert the following:

Berth	Length of Berth Box	Depth Alongside (Year Surveyed)	Controlling Depth In Approaches
VC01	160m	8.7m (2014)	9.1m

7. Page 187

7 TANJONG GUL (KEPPEL SHIPYARD LTD) (1°18·0'N, 103°40·6'E)

Insert the following:

Berth	Length of Berth Box	Depth Alongside (Year Surveyed)	Controlling Depth In Approaches
YHQ2E	180m	11.1m (2012)	-

8. Page 67

Replace Page 67 with the following:

PILOTAGE

GENERAL

- 1 The Maritime and Port Authority of Singapore (MPA) Act 1996, Section 60, provides that:
 - (a) Every vessel while navigating in any pilotage district or part thereof shall be under pilotage and the owner, agent or master of the vessel shall comply with that requirement;
 - (b) A vessel while been moved within any area of the port which is or forms part of a pilotage district shall be deemed to be a vessel navigating in a pilotage district;
 - (c) The Authority (MPA) may, if it appears to the Authority to be necessary, exempt any vessel or class of vessels while navigating in any pilotage district from being under pilotage subject to such conditions as it may think fit to impose.
- 2 The MPA may, if it considers it expedient, authorise any person to pilot vessels in a pilotage district subject to such conditions as it thinks fit.
- 3 This directive sets out the vessels or class of vessels which are to be under compulsory pilotage and those which are exempted or in respect of which exemptions may be sought.
- 4 This directive shall not apply to or in relation to vessels belonging to or operated by the Maritime and Port Authority of Singapore, Singapore Police Coast Guard, Immigration and Checkpoints Authority of Singapore and the Singapore Armed Forces.

DEFINITIONS

- 5 'PILOTAGE DISTRICT'. The Pilotage District is described in the Maritime and Port Authority of Singapore (Pilotage District) Notification 1997 and is divided into three areas viz, "A", "B" and "D". These areas are defined in **Annex I** and depicted in **Annex II**.
- 6 'HEIGHT'. The height of a vessel referred to in this circular is the height of the vessel measured vertically from the waterline of the vessel to the highest point of the vessel including its cargo, structures or equipment on board. If there are extendible structures on board, the highest point shall be the maximum height attainable by these structures when fully extended, if such extended height exceeds the height of its cargo, or fixed structures or equipment.

COMPULSORY PILOTAGE FOR VESSELS CARRYING LIQUEFIED GAS OR CHEMICALS

- 7 Compulsory pilotage applies to all liquefied gas carriers and chemical carriers. For the purpose of compulsory pilotage, a chemical carrier means any vessel which is carrying or has previously carried as a whole or part of the last cargo in bulk any of those dangerous chemicals listed in Chapter 17 of International Maritime Organisation's (IMO) International Code for the Construction and Equipment of Ships Carrying Dangerous Chemicals in Bulk (IBC Code). A vessel shall remain to be considered a chemical carrier so long as any of her cargo tanks or cargo system is not completely cleared and removed of any such residual cargo.
- 8 In addition to liquefied gas carriers and chemical carriers, other vessels to which compulsory pilotage applies, when moving within a particular area of the Pilotage District, are as indicated in **Table I**.

IV REPRINT OF RADIO NAVIGATIONAL WARNINGS

The following Radio Navigational Warnings have been shortlisted, as they would be of particular interest to mariners.

TT175

VESSELS IN EAST JOHOR STRAIT ARE ADVISED TO NAVIGATE WITH PARTICULAR ALERTNESS AND CAUTION WHEN NEAR THE PROJECT AREAS OFF PULAU TEKONG, CHANGI AND MALANG PAPAN AS SHALLOW WATER AREAS EXIST. VESSELS ARE REMINDED TO PROCEED AT A SAFE SPEED AND MAINTAIN A PROPER LOOK-OUT, PARTICULARLY FOR TUGS AND BARGES NAVIGATING NEAR THE PROJECT AREAS AND PASSENGER FERRIES CROSSING BETWEEN CHANGI AND PULAU TEKONG AND VICINITY OF PASIR GUDANG.

TT273

ALL VESSELS ARE ADVISED TO NAVIGATE WITH CAUTION, COMPLY WITH THE INTERNATIONAL COLLISION REGULATIONS, MAINTAIN VHF RADIO WATCH AND LISTEN TO TRAFFIC INFORMATION WHEN NAVIGATING IN THE SINGAPORE STRAIT AND PORT WATERS. MARINERS ARE ALSO ADVISED TO KEEP A GOOD LOOKOUT OF FREQUENT FERRIES CROSSING THE SINGAPORE STRAIT.

TT282

RACON DELTA Q(6).LFI.15s IN POSITION 01-03.60N 103-38.85E IS REPORTED UNLIT. ALL VESSELS ARE ADVISED TO NAVIGATE WITH PARTICULAR CAUTION.

TT301

DHI-ADCP BUOY WILL BE INSTALLED ON 05 FEB 2016 IN POSN 01-09.501N 103-44.599E. LIGHT CHARACTERISTIC, FL.Y.4S. COLOUR SHAPE, YELLOW PILLAR. THE BUOY IS EXPECTED TO BE IN PLACE FOR AT LEAST 6 MONTHS. VESSELS ARE ADVISED TO NAVIGATE WITH PARTICULAR CAUTION.

TT313

BRB ISOLATED DANGER BUOY (OFF TK BEACON) FL(2).5s IN POSITION 01-05.87N 103-43.69E IS REPORTED UNLIT. ALL VESSELS ARE ADVISED TO NAVIGATE WITH PARTICULAR CAUTION.

TT315

BATU BERHANTI ISOLATED DANGER BUOY IS OUT OF POSITION, APPROXIMATE PRESENT POSITION IS 01-11.59N 103-51370E. ALL VESSELS ARE ADVISED TO NAVIGATE WITH PARTICULAR CAUTION.

TT961

VESSELS INTENDING TO CROSS THE TRAFFIC SEPARATION SCHEME (TSS) OR PRECAUTIONARY AREAS IN THE SINGAPORE STRAIT DURING THE HOURS OF DARKNESS ARE RECOMMENDED TO DISPLAY THE NIGHT SIGNALS CONSISTING OF 3 ALL ROUND GREEN LIGHTS IN A VERTICAL LINE AS DETAILED IN MARITIME AND PORT AUTHORITY OF SINGAPORE'S PORT MARINE CIRCULAR, 02 OF 2011 DATED 30 MAY 2011.

SR123 (AMENDED ON 200330Z)

SEA ROBBERIES ARE REPORTED IN THE SINGAPORE STRAIT, ALL VESSELS ARE REMINDED TO MAINTAIN A PROPER LOOK-OUT AND REPORT ANY SUSPICIOUS CRAFT TO VTIS SINGAPORE.

ISSUED BY SINGAPORE PORT OPERATIONS CONTROL CENTRE (as at 27th Mar 2016)

V
EXTRACT OF ADMIRALTY NOTICES TO MARINERS
FOR DUAL-BADGED CHARTS

These notices can also be accessed directly from UKHO Website:

<http://www.ukho.gov.uk/ProductsandServices/MaritimeSafety/Pages/NMPublic.aspx>

1206* SINGAPORE - TSS Singapore Strait (off Changi/Pulau Batam) - Buoy. Wrecks.

Source: Maritime and Port Authority of Singapore

Note: Former Notice 442(T)/16 is cancelled.

Chart 4041 [*previous update 692/16*] WGS84 DATUM

Insert



1° 12' 39N., 103° 54' 15E.

1° 12' 81N., 103° 54' 90E.

symbol, blue and yellow emergency wreck marking pillar
light-buoy, *Al. Oc. BuY. 3s*

1° 12' 70N., 103° 54' 52E.

1241* SINGAPORE - Pulau Busing N - Dredged depths.

Source: Maritime and Port Authority of Singapore

Chart 4032 [*previous update 204/16*] WGS84 DATUM

Amend

dredged depth to, *16.7m (2015)*, centred on:
dredged depth to, *16.8m (2015)*, centred on:
dredged depth to, *14.1m (2015)*, centred on:
dredged depth to, *12.7m (2015)*, centred on:

1° 14' 365N., 103° 44' 778E.

1° 14' 392N., 103° 44' 990E.

1° 14' 318N., 103° 44' 943E.

1° 14' 331N., 103° 45' 040E.

1435 MALAYSIA - Peninsular Malaysia, East Coast - Johor - Tanjung Pengelih - Light-beacons.

Source: Marine Department, Peninsular Malaysian Notice 15/16

Chart 4043 [*previous update 6129/15*] WGS84 DATUM

Insert



Fl.G.5s

1° 22' 23N., 104° 05' 30E.



Fl.R.5s

1° 22' 25N., 104° 05' 34E.

Updated to Admiralty Notices to Mariners Edition No. 12 of 2016 dated 24th March 2016

SINGAPORE ENC DISTRIBUTORS

ENC DISTRIBUTOR	ADDRESS	TEL/FAX /EMAIL/WEBSITE
ChartWorld GmbH	Atlantic Haus, Zirkusweg 1 D-20359 Hamburg Germany	Tel: +49 40 853 58 6942 Fax: +49 40 853 58 6949 Email: sales@chartworld.com
ChartWorld Asia Pacific Pte Ltd.	Frontech Centre 07-01 15 Jalan Kilang Barat Singapore 159357	Tel: +65 6513 3500 Website: http://www.chartworld.com http://www.ecdis-as-a-service.com
Global Navigation Solutions Pte Ltd	2 Boon Leat Terrace #05-02/03/04, Harbourside Building 2 Singapore 119844	Tel: +65 6270 4060 Fax: +65 6276 3858 Email: sg.info@gnsworldwide.com Website: www.gnsworldwide.com
Maritime Information Systems (MARIS)	52, Telok Blangah Road #01-06 Telok Blangah House Singapore 058809	Tel: +65 6276 1472 Fax: +65 6276 1473 Email: : support@maris.sg Website: http://www.maris.no
Maritime Information Systems AS (MARIS)	Danholmen 25, 3128 Notteroy Norway	Tel: +47 33 30 42 50 Fax: +47 33 30 42 51 Email: : sales@maris.no Website: http://www.maris.no
Motion Smith	15 Jalan Kilang Barat #08-01/05 Frontech Centre Singapore 159357	Tel: +65 6220 5098 Fax: +65 6225 4902 Email: sales@motsmith.com Website: http://www.motsmith.com
Transas Marine Pacific Pte Ltd	Cyber Centre 16/18 Jalan Kilang Barat Off Jalan Bukit Merah Singapore 159358	Tel: +65 6271 0200 Fax: +65 6271 7300 Email: navigation.asia@transas.com Website: http://www.transas.com
Japan Hydrographic Association (Electronic Charts Division)	Daiichi Sogo Bldg, 6F 1-6-6, Hanedakuko, Ota-ku Tokyo 144-0041, Japan	Tel: +81 3 5708 7093 Fax: +81 3 5708 7094 Email: shimizu-6kj@jha.jp Website: http://www.jha.or.jp/en/jha/
Jeppesen Norway AS	P.O Box 212 , N-4371 Egersund Norway	Tel: +47 51 46 4700 Fax: +47 51 46 4701 Email: license.marine@jeppesen.com Website : http://www.jeppesen.com/marine
PRIMAR STAVANGER	Lervigsveien 36, P.O Box 60 N-4001 Stavanger, Norway	Tel: +47 51 93 9500 Fax: +47 51 93 9501 Email: sales@ecc.no Website : http://www.primar.no
The United Kingdom Hydrographic Office	Admiralty Way, Taunton Somerset, TA1 2DN United Kingdom	Tel: +44 1823 33 7900 Fax: +44 1823 28 4077 Emails: ENCS.SalesReports@ukho.gov.uk Website: http://www.ukho.gov.uk

Chart Distributors for the Maritime and Port Authority of Singapore
Nautical Charts and Publications

Please approach any of the Chart Distributors to purchase the Singapore Nautical Charts and Publications.

CHART DISTRIBUTORS	ADDRESS	TEL/FAX/EMAIL/WEBSITE
Chartco (Singapore) Pte Ltd	896 Dunearn Road #03-05 Sime Darby Centre Singapore 589472	Tel: +65 6545 9880 Ext 65285 Fax: +65 6545 8892 Email: leslie.khoo@chartco.com Website: http://www.chartco.com
Cornes (Singapore) Pte Ltd	10 Anson Road #23-06/6A International Plaza Singapore 079903	Tel: +65 6223 8320 Fax: +65 6223 8321 Email: sales9850@cspl.sg Website: http://www.cornes-charts.com
E.W. Liner Charts & Publications Pte Ltd	100, Pasir Panjang Road #05-10 Singapore 118518	Tel: +65 6323 0773 Fax: +65 6323 0775 Email: sales@ewliner.com Website: http://www.ewliner.com
Global Navigation Solutions Pte Ltd	2 Boon Leat Terrace #05-02/03/04, Harbourside Building 2 Singapore 119844	Tel: +65 6270 4060 (After office hours: +65 9632 5268) Fax: +65 6276 3858 Email: sg.info@gnsworldwide.com Website: www.gnsworldwide.com
Motion Smith	15 Jalan Kilang Barat #08-01/05 Frontech Centre Singapore 159357	Tel: +65 6220 5098 (After office hours: +65 8163 9993) Fax: +65 6225 4902 Email: sales@motsmith.com Website: http://www.motsmith.com

HYDROGRAPHIC NOTE - Instructions

1. Mariners are requested to notify the Chief Hydrographer, Maritime and Port Authority of Singapore, when new or suspected dangers to navigation are discovered, changes are observed in aids to navigation or where corrections to nautical publications may be necessary. Reports, which cannot be confirmed or are lacking in certain details should not be withheld.
2. Any ambiguities of time, positioning and depth should be stressed and any firm expectation of being able to check the information provided on a following voyage should be mentioned.
3. Mariners using satellite position fixing systems, eg. GPS, should provide details of equipment and datum used (where applicable). Where bearings (true or magnetic) are taken visually or by radar to fix a position, it should include more than two objects in order to provide a check on its accuracy. A position may also be defined by bearing and distance from a conspicuous object eg. beacon, lighthouse etc.
4. The note should include a tracing or a digital image of the chart used and the details should be clearly marked.
5. Echo sounders frequently register greater depths than the advertised maximum depth for the equipment, eg. a trace appearing at 50 metres may be in fact be 550 metres or even 1050 metres for equipment whose maximum depth is 500 metres. Erroneous depths caused by 2nd transmission error can usually be recognised by the following:
 - (a) the tracing being weaker than normal for the depth registered,
 - (b) the trace appearing to pass through the transmission line,
 - (c) the feathery nature of the trace.
6. Upon receipt of a hydrographic note, a Notice to Mariners may be issued. The sender's vessel or name is quoted as the source unless the same information is also received in foreign Notices to Mariners.
7. Reports of shoals, uncharted dangers and defects in aids to navigation may also be made to the appropriate Singapore Port Operations Control Centre on VHF Channels 10, 12, 14, 68 or 73.

HYDROGRAPHIC NOTE

To:

Chief Hydrographer
Maritime and Port Authority of Singapore
7B Keppel Road #20-00 Tanjong Pagar Complex
Singapore 089055

Tel : (65) 6325 2027
Fax : (65) 6226 1076
Email : hydrographic@mpa.gov.sg

Sender's Contact Details :

Date :

Name of Vessel :

Address of Sender :

Tel : Fax :

Email :

Nature of Observation :

General Location :

Subject :

Position : Lat. Long.

Charts Used :

Date & Time of Observation :

Details :

.....

.....

Attachment :

Equipment Used :

Type of Position Fixing : GPS / DGPS Others :

Type of Echo Sounder :

Name and Signature :

Ship's/Company's Stamp :