



MARITIME AND PORT AUTHORITY OF SINGAPORE

PORT MARINE CIRCULAR
NO. 21 of 2017

20 November 2017

Shipping Community
Harbour Craft Community
Pleasure Craft Community

SISTERS' ISLANDS MARINE PARK

With effect from 20 Nov 2017, the waters around Sisters' Islands, and along the western reefs of both St John's Island and Pulau Tekukor, also known as Sisters' Islands Marine Park, are demarcated for the conservation of marine organisms and designated as a marine park (and therefore considered a public park) under the Parks and Trees Act Cap. 216 and the Parks and Trees Regulations. The Sisters' Islands Marine Park is bounded by the coordinates in **Annex A**.

2 Port users navigating in these areas are to observe the provisions of the Parks and Trees Act Cap. 216 and the Parks and Trees Regulations when they are in the marine park, some of which have been highlighted in **Annex C**. Further information on the marine park may be accessed at the National Parks Board's website (www.nparks.gov.sg/gardens-parks-and-nature/parks-and-nature-reserves/sisters-islands-marine-park).

3 Port users are also reminded to ensure continued compliance with the provisions of the Maritime and Port Authority of Singapore (Port) Regulations, when transiting within the waters of the Sisters' Islands Marine Park.

4 Any queries relating to this circular should be directed to Capt Shawn Hoe (MPA) at Tel: +65 6773 7401 or Mr Collin Tong (NParks) at Tel: +65 6465 1684.

CAPT KEVIN WONG
PORT MASTER
MARITIME AND PORT AUTHORITY OF SINGAPORE

BOUNDARIES OF SISTERS' ISLANDS MARINE PARK ("SIMP")

The Sisters' Islands Marine Park is the waters bounded by a line joining the following geographical positions:

(a)

- (1) 1°13.715'N 103°50.373'E on the southern shore of Pulau Tekukor
- (2) 1°13.705'N 103°50.336'E
- (3) 1°13.845'N 103°50.178'E
- (4) 1°14.009'N 103°50.112'E
- (5) 1°14.066'N 103°50.150'E
- (6) 1°13.983'N 103°50.193'E

on the northern shore of Pulau Tekukor, including the seaward side of Pulau Tekukor;

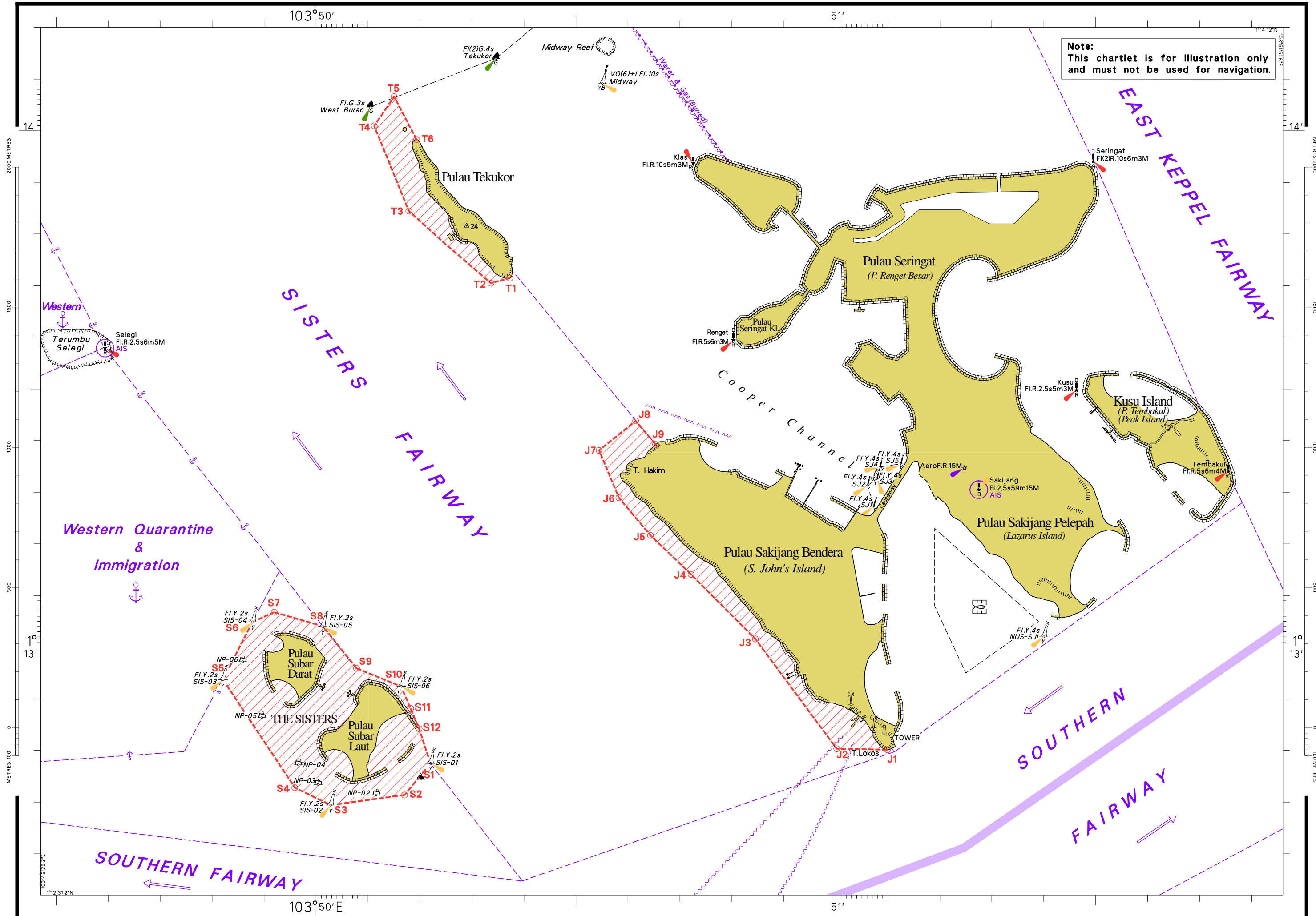
(b)

- (1) 1°12.775'N 103°50.220'E
- (2) 1°12.714'N 103°50.170'E
- (3) 1°12.694'N 103°50.028'E
- (4) 1°12.728'N 103°49.959'E
- (5) 1°12.937'N 103°49.821'E
- (6) 1°13.049'N 103°49.878'E
- (7) 1°13.068'N 103°49.919'E
- (8) 1°13.040'N 103°50.013'E
- (9) 1°12.959'N 103°50.078'E
- (10) 1°12.924'N 103°50.164'E
- (11) 1°12.881'N 103°50.182'E
- (12) 1°12.842'N 103°50.198'E,

to the point of origin at (1), including Pulau Subar Darat and Pulau Subar Laut;

(c)

- (1) 1°12.801'N 103°51.099'E on the southern shore of Pulau Sakijang Bendera
- (2) 1°12.803'N 103°51.002'E
- (3) 1°13.016'N 103°50.845'E
- (4) 1°13.141'N 103°50.721'E
- (5) 1°13.216'N 103°50.643'E
- (6) 1°13.289'N 103°50.582'E
- (7) 1°13.381'N 103°50.545'E
- (8) 1°13.438'N 103°50.615'E
- (9) 1°13.393'N 103°50.653'E on the northern shore of Pulau Sakijang Bendera, including the seaward side of Pulau Sakijang Bendera



PARK INFORMATION FOR SISTERS' ISLANDS MARINE PARK

Opening Hours

Big Sister's Island (Pulau Subar Laut) is open to the public from 7am to 7pm on a daily basis. All other areas within the Sisters' Islands Marine Park (Small Sister's Island and the reefs along the western coast of St John's Island and Pulau Tekukor) will be zoned strictly for conservation and research, and will not be open to the public.

Do's and Don'ts

Marine Park Etiquette

Play your part in protecting the biodiversity in the Marine Park. By conserving the Sisters' Islands Marine Park, you help to ensure that marine animals will continue to have a safe environment to reproduce, grow and flourish.



No Fishing or Poaching



No Feeding of Wild Animals



No Releasing of Animals



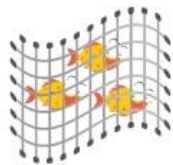
Keep the Park Smoke-Free



Keep Music Volume Down



No Open Fires and Barbeques



No Casting of Nets



Remove Your Litter



No Anchoring



Clean Up after your Pets and Keep Them Leashed around Other Visitors



Fly Drones and Model Aircrafts only with a Permit

*These Do's and Don'ts serve only as a guide. They are not exhaustive or intended to be a complete list of the prohibitions or regulations governing our parks and any omission does not constitute a waiver of any offence. Please refer to the [Parks and Trees Act \(Cap. 216\)](#), the subsidiary legislation under the Act and any notices or signboards that have been put up within the parks for reference to the applicable rules and regulations.