



MARITIME AND PORT AUTHORITY OF SINGAPORE

PORT MARINE NOTICE  
NO. 40 OF 2025

07 April 2025

Shipping Community  
Harbour Craft Community  
Pleasure Craft Community

**SOIL INVESTIGATION WORKS OFF SAKRA BASIN**

**Applicable to:** Mariners operating in the vicinity of Sakra Basin.

Date : With effect from 07 April 2025 to 07 June 2025.

Location : At Sea, at points indicated by the following co-ordinates (see attached chartlet):

Working Area A (WGS 84 Datum)

<u>Point</u>	<u>Latitude (N)</u>	<u>Longitude (E)</u>
MBH 1	01°15.427'	103°42.704'
MBH 2	01°15.495'	103°42.812'
MBH 3	01°15.540'	103°42.882'

Working Hours : 24 hours daily including, Sundays and Public Holidays.

<u>Craft</u>	Name	Harbour Craft Licence No.	Description
	GEOLAB SAMUDRA 10	SR3825C	JACK-UP BARGE
	KM1	ST 0797E	TUGBOAT
	KM 20	ST 1284G	TUGBOAT
	KM ROMEO	SC 6000G	SAFETY / PASSENGER BOAT
	KM SUCCESS	SC 4388I	SAFETY / PASSENGER BOAT

SAMUDRA GL 99	SR 4081I	JACK-UP BARGE
ST 0689H	ST 0689H	TUGBOAT

These craft will exhibit the appropriate local and international day and night signals.

Details : Soil investigation works will be carried out will be carried out by jack-up barges with the assistance of tugboats.

A safety zone with a circular area of 30 meters radius centered from the barges must be observed

A safety boat will be in attendance at all times to warn and direct craft in the vicinity to keep clear of working area.

Further enquires relating to the project can be directed to:  
Mr. Gilbert Chuah, Project Manager,  
Tel: +65 9771 3635, Email: gilbert@geonamics.com.sg  
Or  
Dr. Henry Tan, Assistant Project Manager,  
Tel: +65 9483 5271, Email: henry@geonamics.com.sg

Caution : **When in the vicinity of the working area, mariners are reminded to:**

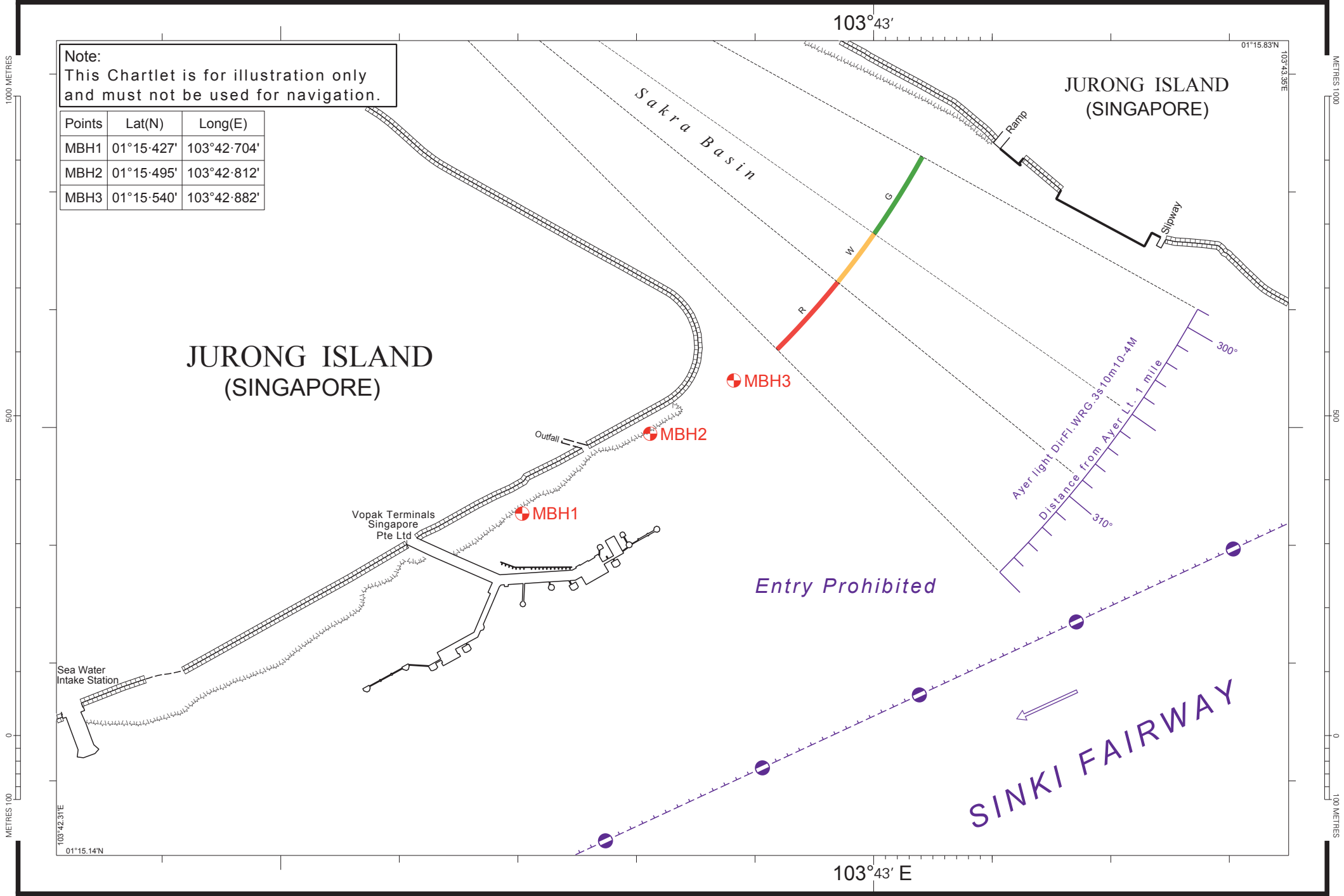
- a) **Keep well clear and not to enter the working area;**
- b) **Maintain a proper lookout;**
- c) **Proceed at a safe speed and navigate with caution;**
- d) **Maintain a listening watch oh VHF Channel 68 (Sinki Control); and communicate with Sinki Control for assistance, if required.**

Please call Capt. Faroque Hossain Sikder at Tel: +65 6325 2472 or Marine Safety Control Centre (MSCC) Duty Officer at (65) 6325 2488/2489 for clarification on this Port Marine Notice.

CAPT CHONG JIA CHYUA  
PORT MASTER  
MARITIME AND PORT AUTHORITY OF SINGAPORE

Note:  
This Chartlet is for illustration only  
and must not be used for navigation.

Points	Lat(N)	Long(E)
MBH1	01°15'427'	103°42'704'
MBH2	01°15'495'	103°42'812'
MBH3	01°15'540'	103°42'882'



Entry Prohibited

SINKI FAIRWAY