



MARITIME AND PORT AUTHORITY OF SINGAPORE

PORT MARINE NOTICE  
NO. 12 OF 2025

24 Jan 2025

Shipping Community  
Harbour Craft Community  
Pleasure Craft Community

**TRENCHING, ROCKSAW & UNDERWATER CABLE LAYING OPERATION ALONG EAST  
JOHOR STRAIT**

**Applicable to:** Mariners operating along East Johor Strait

Date : With effect from 24 Jan 2025 to 31 March 2025.

Location : At sea off Changi, within the working area bounded by the following co-ordinates (see attached chartlet):

(WGS 84 Datum)		
Working Area B		
Point	Latitude (N)	Longitude (E)
1	1°23.274"	104°00.267"
2	1°23.321"	104°00.241"
3	1°23.905"	104°00.719"
4	1°23.863"	104°00.684"
Working Area C		
1	1°23.905"	104°00.719"
2	1°23.863"	104°00.684"
3	1°19.827"	104°05.088"
4	1°19.868"	104°05.123"

Working Area D

Point	Latitude (N)	Longitude (E)
1	1°19.827"	104°05.088"
2	1°19.868"	104°05.123"
3	1°17.514"	104°07.197"
4	1°17.480"	104°07.155"

Working Hours : 24 hours daily including Sundays and Public Holidays.

<u>Craft</u>	Name	Harbour Craft Licence No.	Description
	ASEAN Protector	THCLMP	Cable Laying Barge
	Eng Hup Gallant	ST 1526I	Anchor Handling Tug
	Eng Hup Valour	ST 1445I	Anchor Handling Tug
	Eng Hup Energy	SP 1305G	Safety Vessel
	Eng Hup Bee Sin	SP 1302B	Safety Vessel
	Eng Hup Supporter	SP 1306E	Safety Vessel
	Eng Hup Offshore	SP 1303J	Safety Vessel

These craft will exhibit the appropriate local and international day and night signals.

Details : The pre-trenching works and cable laying operation will be carried out by cable laying barge "**ASEAN Protector**".

The safety zone is a circular area with a radius of 150-metres centred at the location of the cable laying barge.

A safety boat will be deployed to warn other craft in the vicinity of the working area.

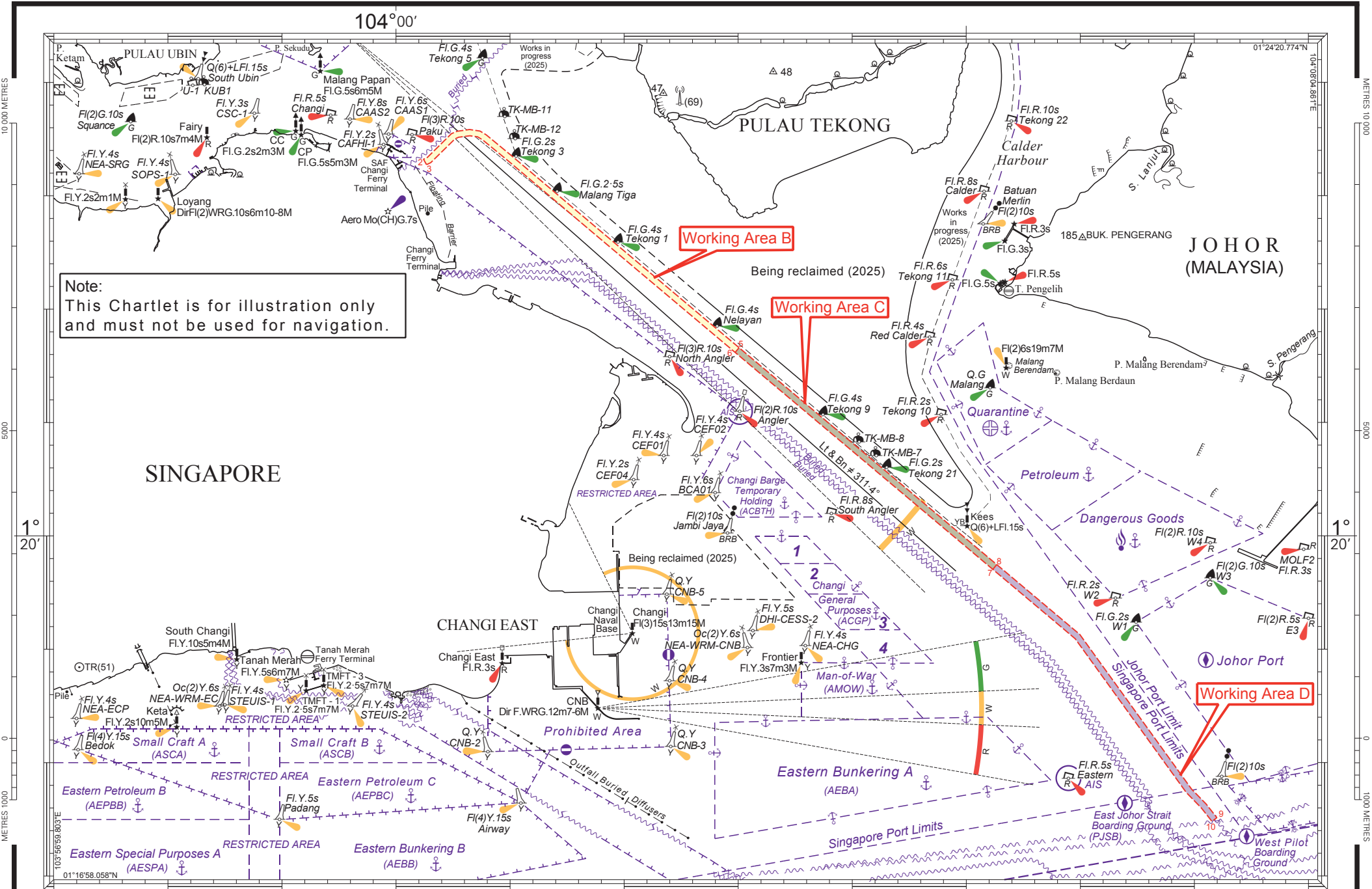
Further enquires relating to the project can be directed to:  
Mr. Joshua Lim, Project Manager,  
Tel: +65 9821-6492, email: joshualim@acpl.com.sg  
or  
Mr Robert Hsueh, Marine Ops Manager,  
Tel: +65 9739-3092, email: roberthsueh@acpl.com.sg

Caution : **When in the vicinity of the working area, mariners are reminded to:**

- a) Keep well clear and not to enter the working area;**
- b) Maintain a proper lookout;**
- c) Proceed at a safe speed and navigate with caution;**
- d) Maintain a listening watch on VHF Channel 21 (Sembawang Control); and Communicate with Sembawang Control for assistance, if required.**

Please call Capt. Faroque Hossain Sikder at Tel: 6325 2472 or Marine Safety Control Centre (MSCC) Duty Officer Tel: 6325 2488/89 for clarification on this Port Marine Notice

CAPT CHONG JIA CHYUAN  
PORT MASTER  
MARITIME AND PORT AUTHORITY OF SINGAPORE



Note:  
This Chartlet is for illustration only  
and must not be used for navigation.