



MARITIME AND PORT AUTHORITY OF SINGAPORE

PORT MARINE NOTICE  
NO. 98 OF 2024

21 Nov 2024

Shipping Community  
Harbour Craft Community  
Pleasure Craft Community

**TRANSPORT OF SAND MATERIAL OFF VERY LARGE CRUDE CARRIER ANCHORAGE  
(AVLCC)**

**Applicable to:** Mariners operating in the vicinity off AVLCC

This is a revision of Port Marine Notice No 48 of 2024. The working period has been extended, the chartlet and list of craft has been updated.

Date : With effect from 22 Nov 2024 to 22 May 2025

Location : At Tuas View Extension, within the working area bounded by the following co-ordinates (see attached chartlet):

(WGS 84 Datum)

<u>Point</u>	<u>Latitude (N)</u>	<u>Longitude (E)</u>
1	01° 13.296'	103° 37.359'
2	01° 13.296'	103° 37.902'
3	01° 13.296'	103° 38.476'
4	01° 12.809'	103° 38.717'
5	01° 12.673'	103° 38.522'
6	01° 12.973'	103° 37.359'

Working Hours : 24 hours daily including Sundays and Public Holidays.

Craft : Please refer to **ANNEX** for the list of craft for deployment in the working area.

These craft will exhibit the appropriate local and international day and night signals.

Details : The work involves transporting and discharging of sand material by hopper barges to the working area.

A safety boat will be deployed to warn other craft in the vicinity of the working area.

Further enquires relating to the project can be directed to Mr Cheang Yew Kong, Project Manager at Tel: 9720-3121, email: cheangyk@xinshaholding.com.

Caution : **When in the vicinity of the working area, mariners are reminded to:**

- a) **Keep well clear and not to enter the working area;**
- b) **Maintain a proper lookout;**
- c) **Proceed at a safe speed and navigate with caution;**
- d) **Maintain a listening watch on VHF Channel 22 (Jurong Control); and**
- e) **Communicate with Jurong Control on VHF Channel 22 for assistance, if required.**

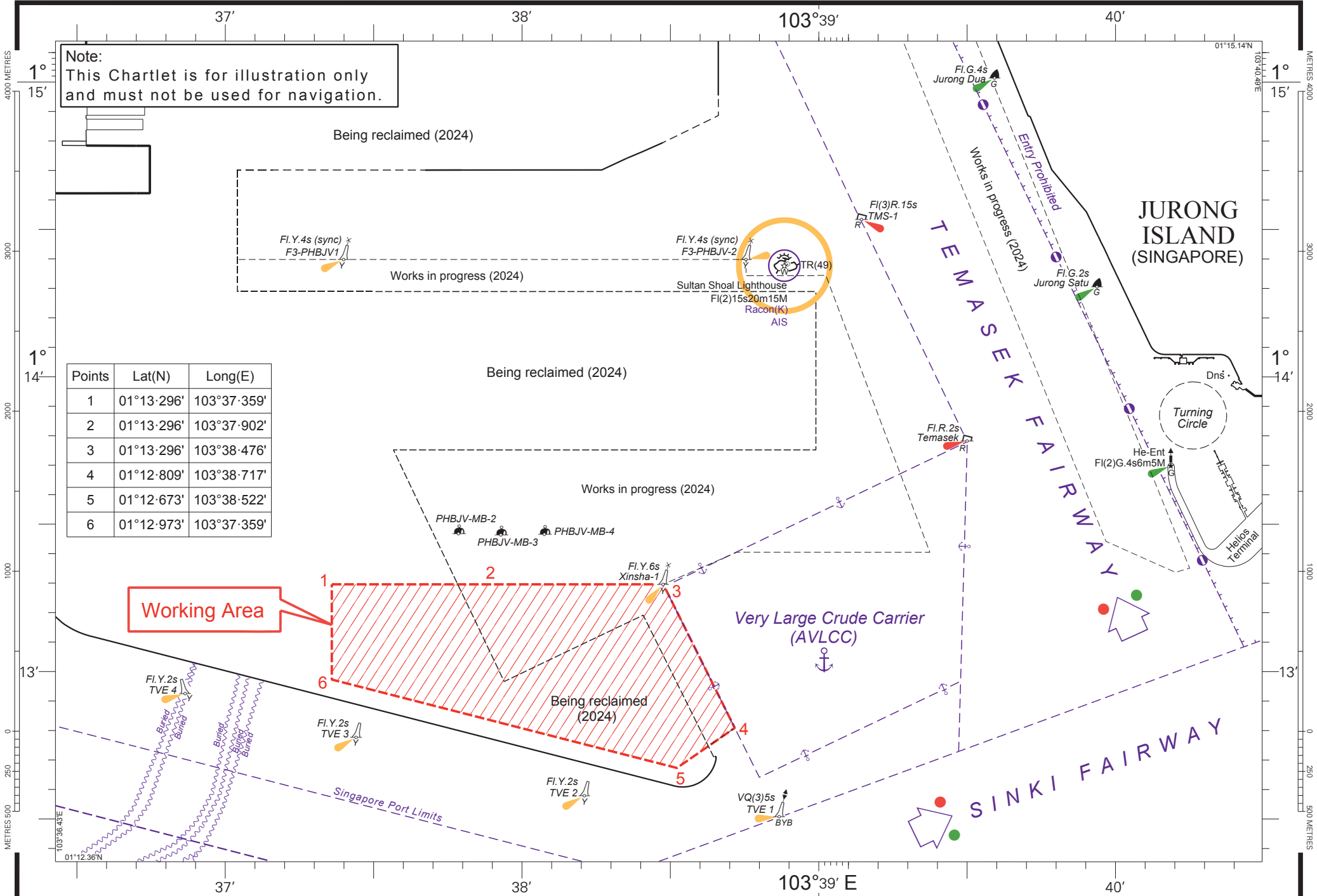
Please call Capt. Magesh Sivakumar at Tel: (65) 6325-2473 or Marine Safety Control Centre (MSCC) Duty Officer at (65) 6325-2488/2489 for clarification on this Port Marine Notice.

CAPT CHONG JIA CHYUAN  
PORT MASTER  
MARITIME AND PORT AUTHORITY OF SINGAPORE

**TRANSPORT OF SAND MATERIAL OFF AVLCC - CRAFT APPROVED FOR DEPLOYMENT IN THE WORKING AREA**

<b><u>Name</u></b>	<b><u>Harbor Craft License No.</u></b>	<b><u>Description</u></b>
A CRYSTAL	ST 1291Z	Tug Boat
ANDROMEDA V	THCPMP-2024/25	Dredger
AQUARIUS EXPRESS 9	SP 1429J	Passenger Boat
AQUARIUS EXPRESS	SC 3885J	Supply Boat
AQUARIUS EXPRESS 13	SP 1448G	Passenger Boat
AXCEL SUPREME	SP 1422C	Passenger Boat / Safety Boat
AXCEL SPLENDOUR	SP 1369C	Passenger Boat
AXCEL STELLAR	SP 1372C	Passenger Boat
DIAMOND 123	SR 3390A	Work Barge
DHI ATLAS	SR 4009F	Utility Vessel
DHI CETUS	SR 2323Z	Utility Vessel
DHI EXPLORER II	SR 2638G	Work Boat
DHI EXPLORER III	SR 2474J	Work Boat
EM 28	SC 4232G	Supply Boat
EM 38	SC 5020F	Supply Boat
ENG HUP GALLANT	ST 1526I	Tug Boat
ENG HUP POLARIS	ST 1488H	Tug Boat
ENG HUP RESPOND	ST 1359B	Tug Boat
ENG HUP VALOUR	ST 1445I	Tug Boat
ENG HUP PUSHER	ST 1347I	Tug Boat
KHB 2512	SC 4249A	Flat Top Barge
KM POWER	SC 3797H	Supply Boat
KM ECHO	SC 8998F	Supply Boat
KM GOLF	SC 9009G	Supply Boat
KM 7	SR 3535A	Work Barge
KST 31	ST 0871H	Tug Boat
KST SKY	ST 1243Z	Tug Boat
KST STELLAR	ST 1286C	Tug Boat
KST SUCCESS	ST 1457B	Tug Boat
KST SUMMIT	ST 1458J	Tug Boat
KST SUPER	ST 1244H	Tug Boat
ORINO COLPHIN	ST 1567F	Tug Boat
POSH	SC 4398F	Supply Boat
PRINS DER NEDERLANDEN	SR 2897E	Dredger
PTC 7	SR 2968H	Crane Barge
PTC 8	SR 2876B	Crane Barge
SL T1	SR 3321I	Hopper Barge
SL T2	SR 3579C	Hopper Barge
SL T11	SR 3303J	Hopper Barge
SL T12	SR 3581E	Hopper Barge
SL T13	SR 3582C	Hopper Barge
SL T14	SR 3274C	Hopper Barge

<b><u>Name</u></b>	<b><u>Harbor Craft License No.</u></b>	<b><u>Description</u></b>
STL V	SR 3119D	Hopper Barge
SP 9562B	SP 9562B	Passenger Boat
SR 3915B	SR 3915B	Work Barge
STL H3	SR 3480J	Hopper Barge
STL H9	SR 3647A	Hopper Barge
STL H16	SR 3644G	Hopper Barge
STL H17	SR 3618H	Hopper Barge
STL H18	SR 3614E	Hopper Barge
STL H3	SR 3480J	Hopper Barge
STL PT 1	ST 1531E	Tug Boat
STL PT 2	ST 1533A	Tug Boat
STL PT 3	ST 1544G	Tug Boat
STL P1	SR 3505Z	Work Barge
STL P3	SP 1404E	Passenger Boat
STL PT4	SR 3860A	Work Barge
STL WB1	SR 3569F	Work Barge



Note:  
This Chartlet is for illustration only  
and must not be used for navigation.

Points	Lat(N)	Long(E)
1	01°13-296'	103°37-359'
2	01°13-296'	103°37-902'
3	01°13-296'	103°38-476'
4	01°12-809'	103°38-717'
5	01°12-673'	103°38-522'
6	01°12-973'	103°37-359'

**Working Area**