



MARITIME AND PORT AUTHORITY OF SINGAPORE

PORT MARINE NOTICE
NO. 87 OF 2024

08 October 2024

Shipping Community
Harbour Craft Community
Pleasure Craft Community

CONSTRUCTION OF MARINE VIADUCT OFF WOODLANDS JETTY

Applicable to: Mariners operating in the vicinity off Woodlands Jetty

This is a revision of PMN 26 of 2024. The working period has been extended and the list of craft has been updated.

Date : With effect from 08 October 2024 to 08 April 2025.

Location : Off Woodlands Jetty, within the working area bounded by the following co-ordinates (see attached chartlet):

Working Area A (WGS 84 Datum)

<u>Point</u>	<u>Latitude (N)</u>	<u>Longitude (E)</u>
1	01°27.592'	103°46.838'
2	1°27.525'N	103°46.882'
3	01°27.462'	103°46.786'
4	01°27.531'	103°46.742'

Working Area B (WGS 84 Datum)

<u>Point</u>	<u>Latitude (N)</u>	<u>Longitude (E)</u>
1	01°27.502'	103°46.897'
2	01°27.351'	103°46.994'
3	01°27.297'	103°46.931'
4	01°27.309'	103°46.885'
5	01°27.439'	103°46.801'

WGS 84 Datum

<u>Name</u>	<u>Latitude (N)</u>	<u>Longitude (E)</u>	<u>Light Characteristics</u>
RTS-LTA-S1	01° 27.537'	103°46.902'	Fl.G.3s
RTS-LTA-S2	01° 27.449'	103°46.766'	Fl.G.3s
RTS-LTA-P1	01° 27.514'	103°46.916'	Fl.R.3s
RTS-LTA-P2	01° 27.426'	103°46.780'	Fl.R.3s

Working Hours : 24 hours daily including Sundays and Public Holidays.

Craft :

<u>Name</u>	<u>Harbour Craft Licence No.</u>	<u>Description</u>
CATERMAS 26	SC 4626H	FLAT TOP BARGE
CATERMAS 31	SR 3886E	CRANE BARGE
CATERMAS 25	SR1178I	WORK BOAT
ENG HUP SUPPORT	ST 1361D	TUG BOAT
KM JULIET	SC 8999D	SUPPLY VESSEL
POE 2180	SC 4986J	FLAT TOP BARGE
CATERMAS 30	SR 3571H	CRANE BARGE
CATERMAS 38	SC 4959C	FLAT TOP BARGE
CATERMAS 28	SR 3183F	CRANE BARGE
ENG HUP GAJAH	ST 1254E	TUG BOAT
KM MIKE	SC 8866A	SUPPLY VESSEL
CATERMAS 50	SR 3358H	CRANE BARGE
CATERMAS 19	SR 3142I	CRANE BARGE
LEADING MARINE I	SC 2763H	WOODEN SUPPLY VESSEL
ISAMIGO 3	SR 2629H	CRANE BARGE
TIONG WOON OCEAN 6	ST 1354A	TUG BOAT
MCE 1	SC 4835Z	FLAT TOP BARGE

These craft will exhibit the appropriate local and international day and night signals.

Details : Construction of marine viaduct will be carried out using barges and assisted by tug boats.

A temporary navigation channel of 50 meters in width is located within the Singapore Port Limits. Vessels with beam of more than 10 meters and heights of more than 20 meters are not allowed to transit the channel.

A safety boat will be deployed to warn other craft in the vicinity of the working area.

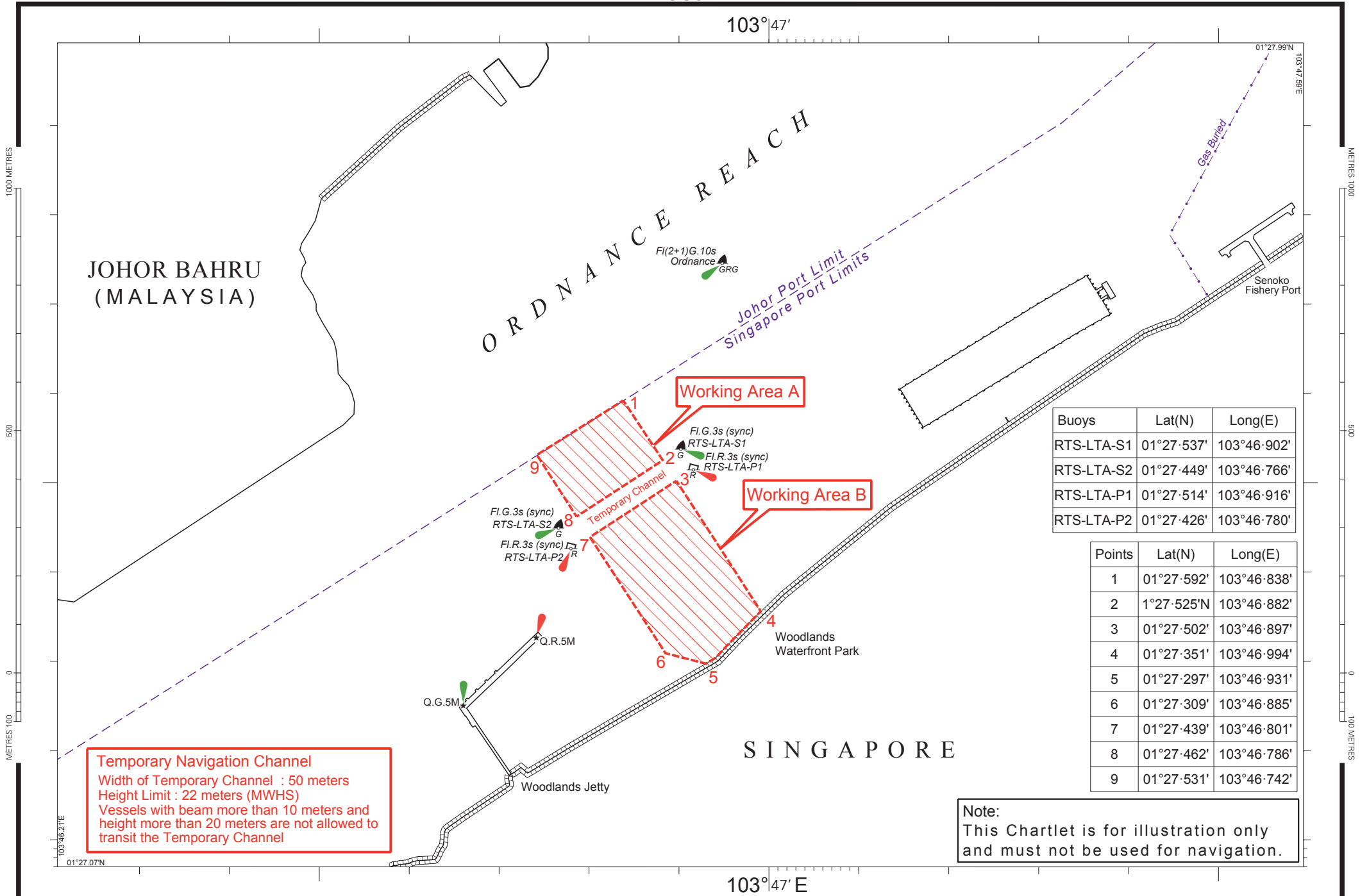
Further enquires relating to the project can be directed to Mr Verdy Nurtanio, Construction Manager at Tel: 9244-7851 (email: verdy.nurtanio@cccltd.sg) or Mr Hary Agusalim at Tel: 8169-9425 (email: hary.agusalim@cccltd.sg).

Caution : When in the vicinity of the working area, mariners are reminded to:

- a) Keep well clear and not to enter the working area;**
- b) Maintain a proper lookout;**
- c) Proceed at a safe speed and navigate with caution;**
- d) Maintain a listening watch on VHF Channel 21 (Sembawang Control); and**
- e) Communicate with Sembawang Control on VHF Channel 21 for assistance, if required.**

Please call Capt. Magesh Sivakumar at Tel: (65) 6325 2473 or Marine Safety Control Centre (MSCC) Duty Officer at (65) 6325 2488/2489 for clarification on this Port Marine Notice.

CAPT CHONG JIA CHYUAN
PORT MASTER
MARITIME AND PORT AUTHORITY OF SINGAPORE



Buoys	Lat(N)	Long(E)
RTS-LTA-S1	01°27'537'	103°46'902'
RTS-LTA-S2	01°27'449'	103°46'766'
RTS-LTA-P1	01°27'514'	103°46'916'
RTS-LTA-P2	01°27'426'	103°46'780'

Points	Lat(N)	Long(E)
1	01°27'592'	103°46'838'
2	1°27'525'N	103°46'882'
3	01°27'502'	103°46'897'
4	01°27'351'	103°46'994'
5	01°27'297'	103°46'931'
6	01°27'309'	103°46'885'
7	01°27'439'	103°46'801'
8	01°27'462'	103°46'786'
9	01°27'531'	103°46'742'

Temporary Navigation Channel
 Width of Temporary Channel : 50 meters
 Height Limit : 22 meters (MWHS)
 Vessels with beam more than 10 meters and height more than 20 meters are not allowed to transit the Temporary Channel

Note:
 This Chartlet is for illustration only and must not be used for navigation.