



MARITIME AND PORT AUTHORITY OF SINGAPORE

PORT MARINE NOTICE
NO. 77 OF 2024

03 September 2024

Shipping Community
Harbour Craft Community
Pleasure Craft Community

ANCHORING OF VESSELS AT TUAS VIEW EXTENSION OFF AVLCC

Applicable to: Mariners operating off Very Large Crude Carrier Anchorage (AVLCC) and transiting Temasek Fairway

This is a revision of Port Marine Notice No. 15 of 2024. The working period has been extended, chartlet and the working area have been updated.

Date : With effect from 03 September 2024 to 03 March 2025

Location : Off AVLCC, at the following coordinates with safety radius (see attached chartlet):

(WGS 84 Datum)

<u>Point</u>	<u>Latitude (N)</u>	<u>Longitude (E)</u>	<u>Safety Radius (m)</u>
ATWJ2	01° 13.421'	103° 38.460'	225

Working Hours : 24 hours daily including Sundays and Public Holidays

Details : Bulk carriers will be anchoring and discharging sand at the break bulking slots at Tuas View Extension. The safety radius is 225m for ATWJ2.

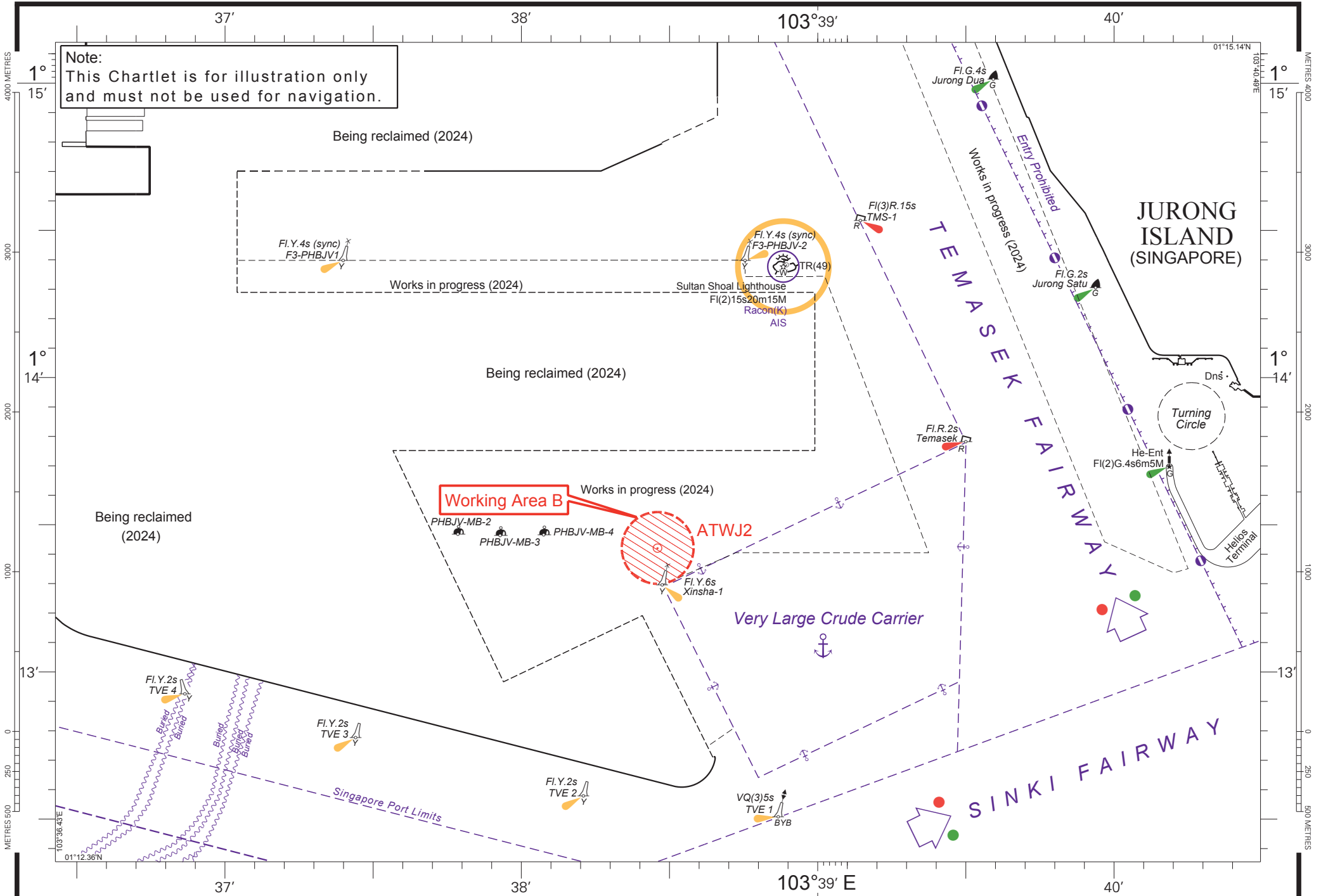
The arrival and departure movements of bulk carriers will take place during daylight hours.

Further enquires relating to the project can be directed to Mr Andrew Lee, Project Manager at Tel: (65) 9777 7896 (email: andrew.lee@helm-marine.com).

- Caution** : **When in the vicinity of the working area, mariners are reminded to:**
- 1) Keep well clear and not to enter the working area.**
 - 2) Maintain a proper lookout;**
 - 3) Proceed at a safe speed and navigate with caution;**
 - 4) Maintain a listening watch on VHF Channel 22 (Jurong Control);**
 - 5) Communicate with Jurong Control on VHF Channel 22 for assistance, if required.**

Please call Capt. Magesh Sivakumar at Tel: (65) 6325 2473 or Marine Safety Control Centre (MSCC) Duty Officer at (65) 6325 2488/2489 for clarification on this Port Marine Notice.

CHONG JIA CHYUAN
PORT MASTER
MARITIME AND PORT AUTHORITY OF SINGAPORE



Note:
This Chartlet is for illustration only
and must not be used for navigation.