



MARITIME AND PORT AUTHORITY OF SINGAPORE

PORT MARINE NOTICE
NO. 38 OF 2024

08 May 2024

Shipping Community
Harbour Craft Community
Pleasure Craft Community

Removal & Extraction of Spun Piles and Installation of Floating Sea Barrier at Poyan

Applicable to: Mariners operating at West Johor Strait

This is a revision of Port Marine No. 114 of 2023. The working period has been extended and the list of craft has been revised.

Date : With effect from 08 May 2024 to 08 Nov 2024.

Location : At coastline off Poyan Reservoir, within the working area bounded by the following co-ordinates (see attached chartlet):

(WGS 84 Datum)

<u>Point</u>	<u>Latitude (N)</u>	<u>Longitude (E)</u>
1	1°21.100'	103°38.287'
2	1°21.253'	103°38.225'
3	1°21.381'	103°38.285'
4	1°21.411'	103°38.284'
5	1°21.507'	103°38.438'
6	1°21.565'	103°38.549'
7	1°21.725'	103°38.648'
8	1°21.787'	103°38.677'
9	1°21.847'	103°38.678'
10	1°21.870'	103°38.702'

11	1°21.917'	103°38.717'
12	1°21.939'	103°38.756'
13	1°22.200'	103°38.884'
14	1°22.400'	103°38.942'
15	1°22.492'	103°39.038'
16	1°22.512'	103°39.076'
17	1°22.504'	103°39.140'
18	1°22.516'	103°39.194'
19	1°23.104'	103°39.439'
20	1°23.128'	103°39.385'
21	1°22.568'	103°39.151'
22	1°22.573'	103°39.065'
23	1°22.541'	103°39.003'
24	1°22.431'	103°38.889'
25	1°22.221'	103°38.829'
26	1°21.982'	103°38.711'
27	1°21.873'	103°38.619'
28	1°21.801'	103°38.618'
29	1°21.610'	103°38.508'
30	1°21.552'	103°38.396'
31	1°21.427'	103°38.325'
32	1°21.118'	103°38.230'

Working Hours : 0700 – 1900 hours (Monday to Saturday)

<u>Craft</u>	<u>Name</u>	<u>Harbor Craft License No.</u>	<u>Description</u>
	JTN 168	ST 1500E	Tugboat
	KMT 5	SR 4799Z	Sludge/Slop Barge
	KMT ALICE	ST 1640J	Tugboat
	KMT JENNY	ST 1559E	Tugboat
	MTC 2	SR 3554H	Crane Barge
	MTC 6	SR 3154B	Workboat/Safety Boat
	MTC Tiga	SR 3589J	Workboat/Safety Boat
	MTC V	SR 3786I	Crane Barge
	Polite VII	ST 1398C	Tug Boat
	Polite VIII	ST 1415G	Tug Boat
	Polite X	ST 1399A	Tug Boat
	QSA 138	ST 1625G	Tug Boat
	QSA PT3	ST 1544G	Tug Boat
	QSA Purari	ST 1277D	Tug Boat
	SKY 23	ST 1090I	Tugboat
	SR 3861Z	SR 3861Z	Workboat
	ST 0689H	ST 0689H	Tugboat

These craft will exhibit the appropriate local and international day and night signals.

Details : The removal & extraction of spun piles and installation of floating sea barrier will be carried out using crane barge. Tugboats and workboats will be deployed to assist in positioning of the crane barge during the operation.

Diving operations, if any, may be carried out during daylight hours only.

A safety boat will always be deployed in the vicinity and in attendance.

Further general enquiries relating to the project can be directed to Mr. Francis Ng Teck Jin, Project Manager at Tel: 9223 1501 (Email: francis@mtc.com.sg).

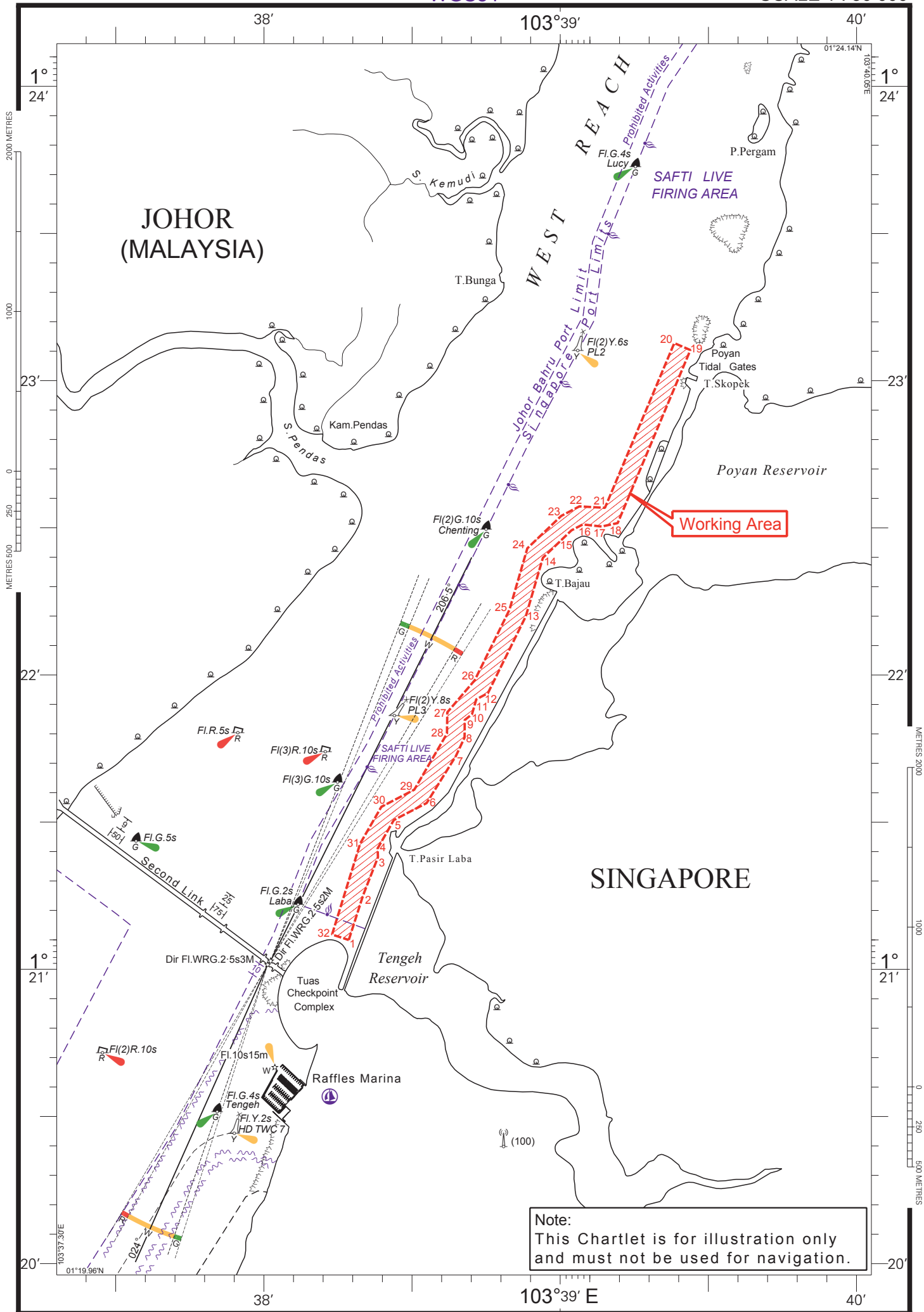
Caution **When in the vicinity of the working area, mariners are reminded to:**

- a) Keep well clear and not to enter the working area.**
- b) Maintain a proper lookout.**
- c) Proceed at a safe speed and navigate with caution.**
- d) Maintain a listening watch on VHF Channel 22 (Jurong Control); and**
- e) Communicate with Jurong Control on VHF Channel 22 for assistance, if required.**

Please call Capt. Magesh Sivakumar at Tel: (65) 6325-2473 or Marine Safety Control Centre (MSCC) Duty Officer at (65) 6325-2488/2489 for clarification on this Port Marine Notice.

CAPT CHONG JIA CHYUAN
PORT MASTER
MARITIME AND PORT AUTHORITY OF SINGAPORE

Updated 14 May 2024



Note:
This Chartlet is for illustration only
and must not be used for navigation.